



Sobek Project, Chile



MIRASOL

RESOURCES LTD

**FOCUSED
ON
DISCOVERY**

TSX-V: MRZ
OTC: MRZLF

**Beaver Creek
Precious Metals Summit
Sept 10-13, 2024**

MIRASOL RESOURCES

Cautionary Statement

This presentation contains certain statements that may be deemed “forward-looking statements”. All statements in this presentation, other than statements of historical fact, that address future operations, resource potential, exploration drilling, exploitation activities and events or developments that the Company expects to occur, are forward looking statements. Forward looking statements are statements that are not historical facts and are generally, but not always, identified by the words “expects”, “plans” “anticipates”, “believes”, “intends”, “estimates”, “projects”, “potential” and similar expressions, or that events or conditions “will”, “would”, “may”, “could” or “should” occur. Information inferred from the interpretation of drilling results and information concerning mineral resource estimates may also be deemed to be forward looking statements, as it constitutes a prediction of what might be found to be present when and if a project is actually developed. Although the Company believes the expectations expressed in such forward-looking statements are based on reasonable assumptions, such statements are not guarantees of future performance and actual results may differ materially from those in the forward-looking statements. Factors that could cause the actual results to differ materially from those in forward-looking statements include market prices, exploitation and exploration successes, and continued availability of capital and financing, and general economic, market or business conditions. Investors are cautioned that any such statements are not guarantees of future performance and actual results or developments may differ materially from those projected in the forward-looking statements. Forward looking statements are based on the beliefs, estimates and opinions of the Company’s management on the date the statements are made. The Company undertakes no obligation to update these forward-looking statements in the event that management’s beliefs, estimates or opinions, or other factors, should change, except as may be required by applicable law.

This presentation may use the terms pit constrained mineral resources estimate and indicated resource. The Company advises that these terms are recognized and defined in Canadian securities regulations (under National Instrument 43-101 “Standards of Disclosure for Mineral Projects”). Investors are cautioned not to assume that any part of or all, of the mineral occurrences in these categories will ever be converted into reserves.

All material project information in this presentation has been previously disclosed to the public by Mirasol.

Tim Heenan (MAIG), President for Mirasol has reviewed and approved the technical content of this presentation and is a Qualified Person under NI 43 -101.

Mirasol - Key Highlights



- Leading exploration company with a track record of success

- \$60 million liquidity event in 2012 from the discovery and sale of the Joaquin Project

- Conservative share structure with significant insider ownership

- Quality copper, gold and silver exploration projects

- Focused on highly-prospective and mine-friendly jurisdictions of Chile and Argentina

- Established in-country permitting and operating experience

- Strategic land position in the high-profile Vicuna District

- Extensive exploration underway: detailed geological and structural mapping and geochemical sampling

- Drill campaign planned at flagship Sobek Project

Share Structure and Treasury

Funds on Hand

Cash	~C\$1.8 Million
------	-----------------

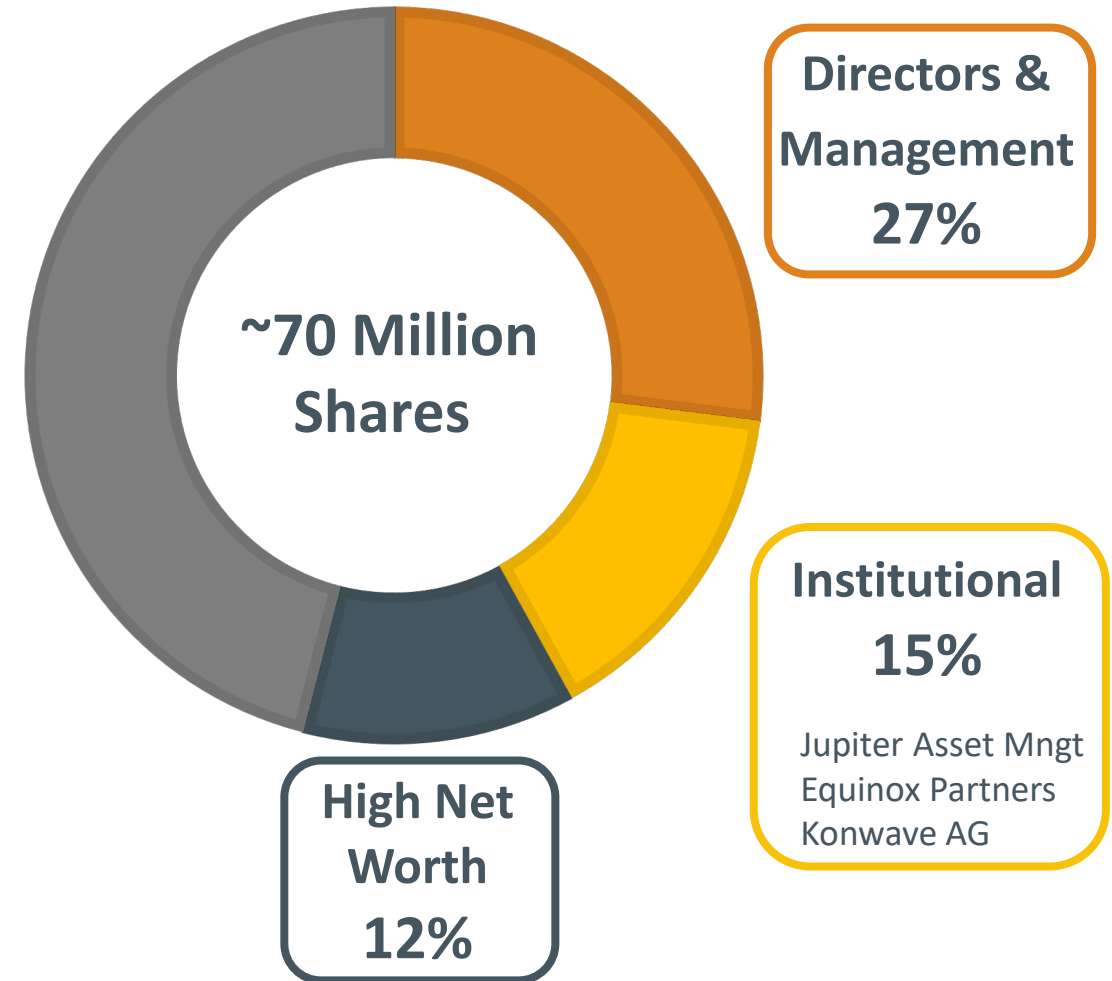
Estimated cash position (end of quarter Mar 31/24 - Adj. for est. expenses & proceeds of financing April 23/24)

Conservative Share Structure

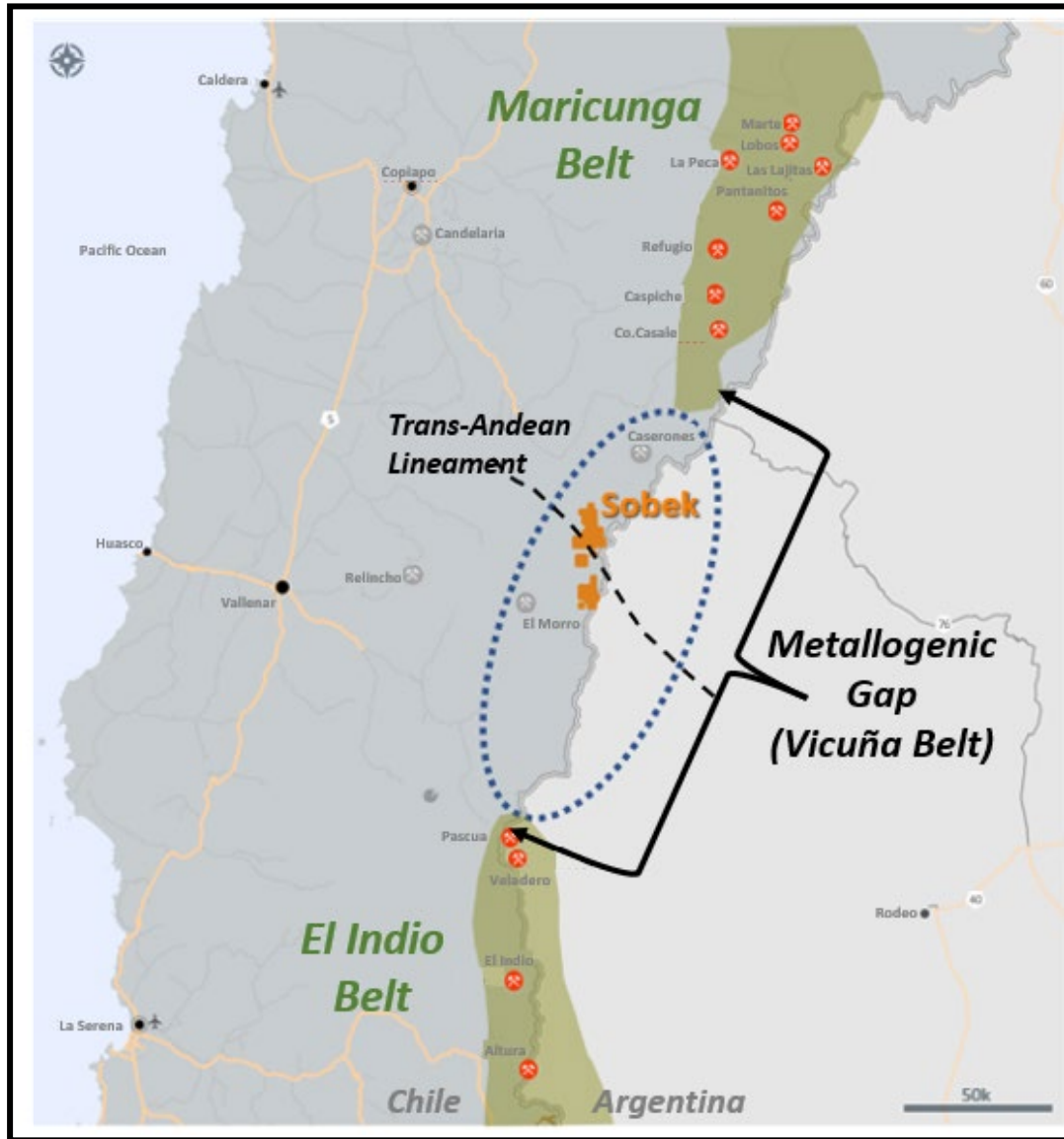
Shares Outstanding	69.8M
--------------------	-------

Shares Fully Diluted	71.7M
----------------------	-------

Market Capitalization	~C\$34.9M
-----------------------	-----------



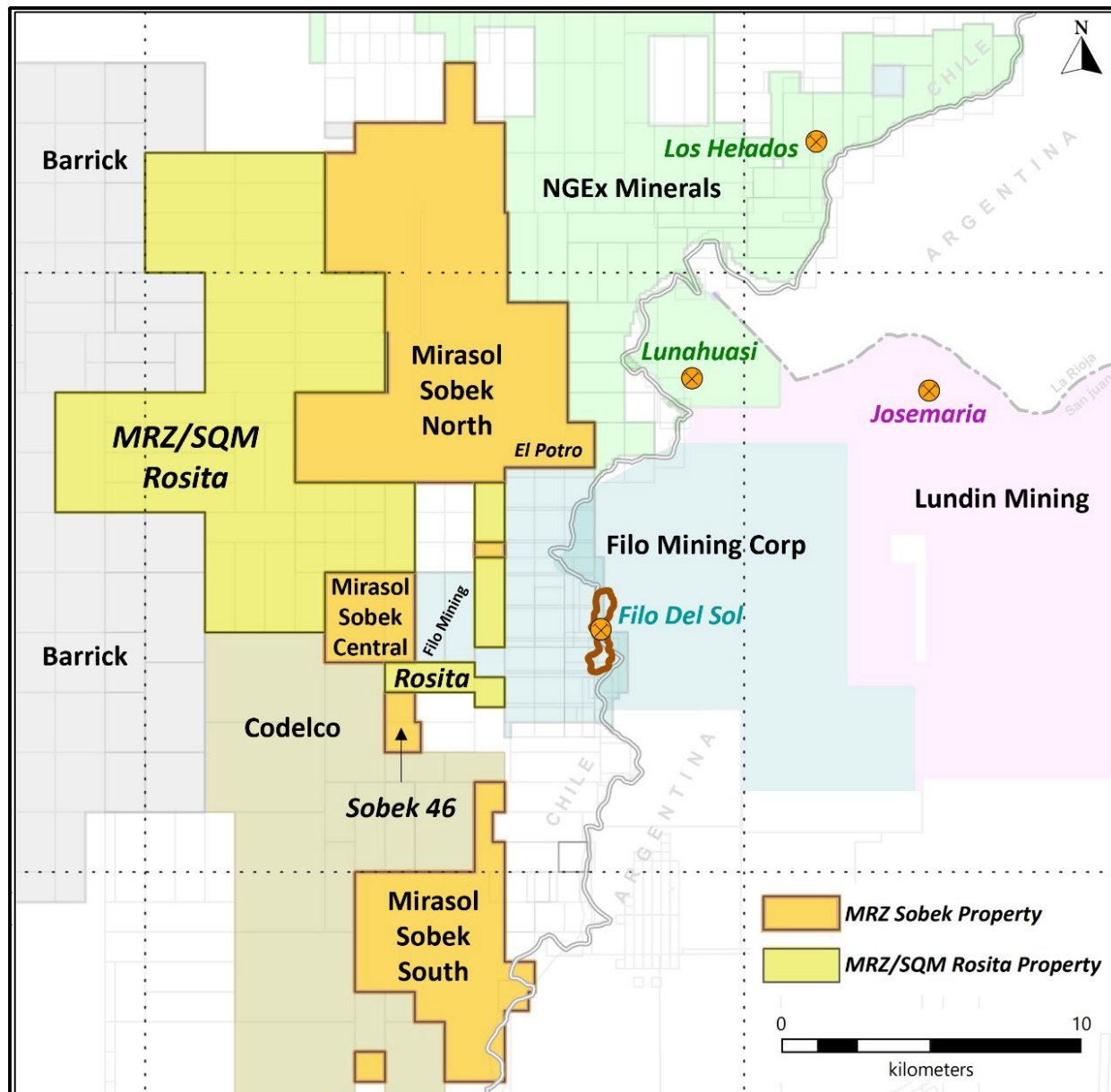
Sobek - Targeting Metallogenic Gaps



Mirasol's Project Generation Initiatives in the Andes along the Chile/Arg Border

- Looking for those NNW trans-Andean lineaments, which are the key controls in almost all major deposits in Chile/Arg.
- Looking for “GAPS” in the metallogenic, meaning “lack of advanced projects/mines within the GAP.”
- In this case with the Sobek area, we have the globally recognized districts of the Maricunga to the north and the El Indio Belts to the south of the GAP.

Sobek - Strategically Positioned in the Vicuña District



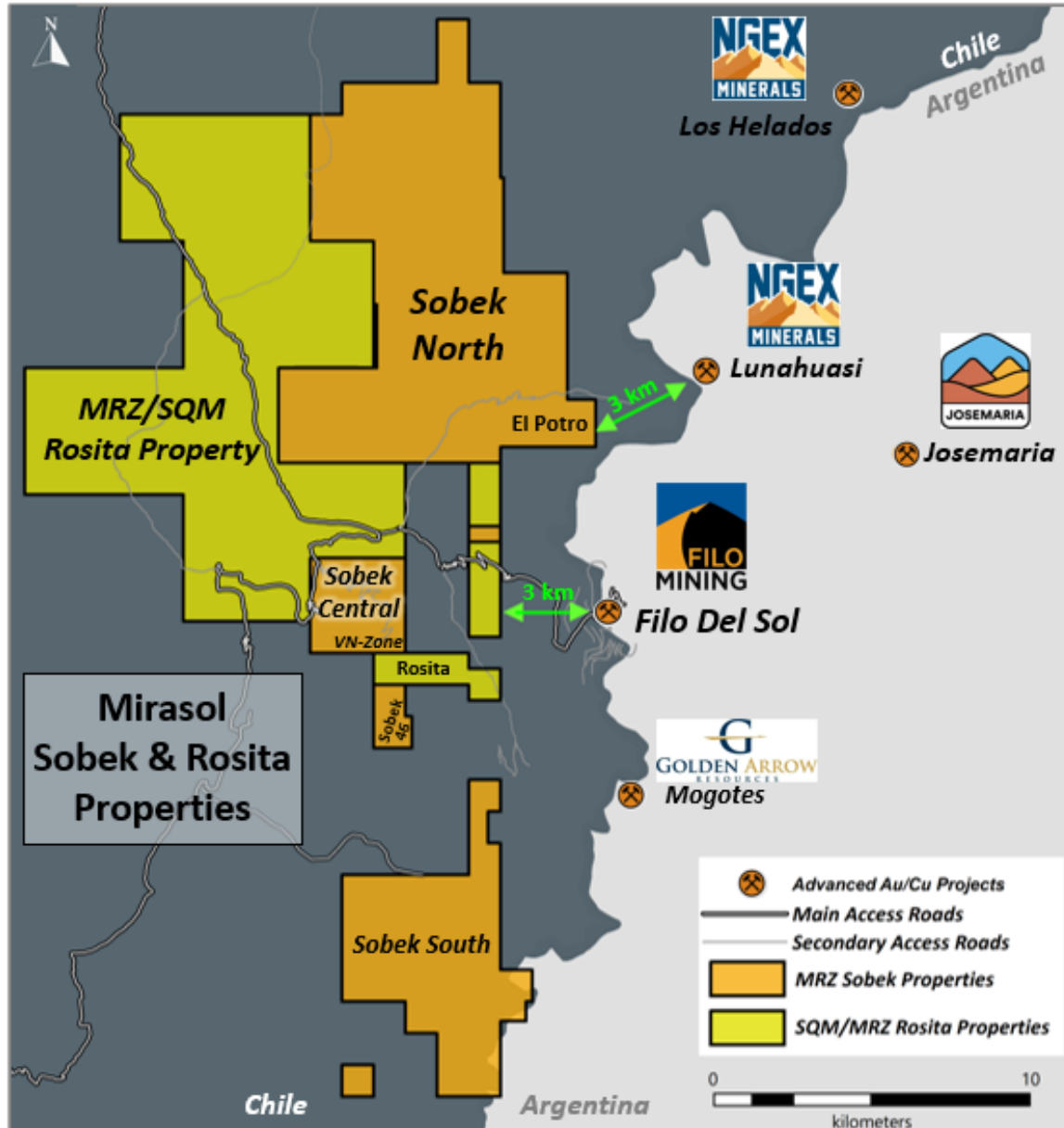
Surrounded by Titans

- Filo Mining:- Filo del Sol
- NGEx: Josemaria - Lunahuasi - Los Helados
- Barrick
- Codelco

BHP & Lundin Filo Acquisition

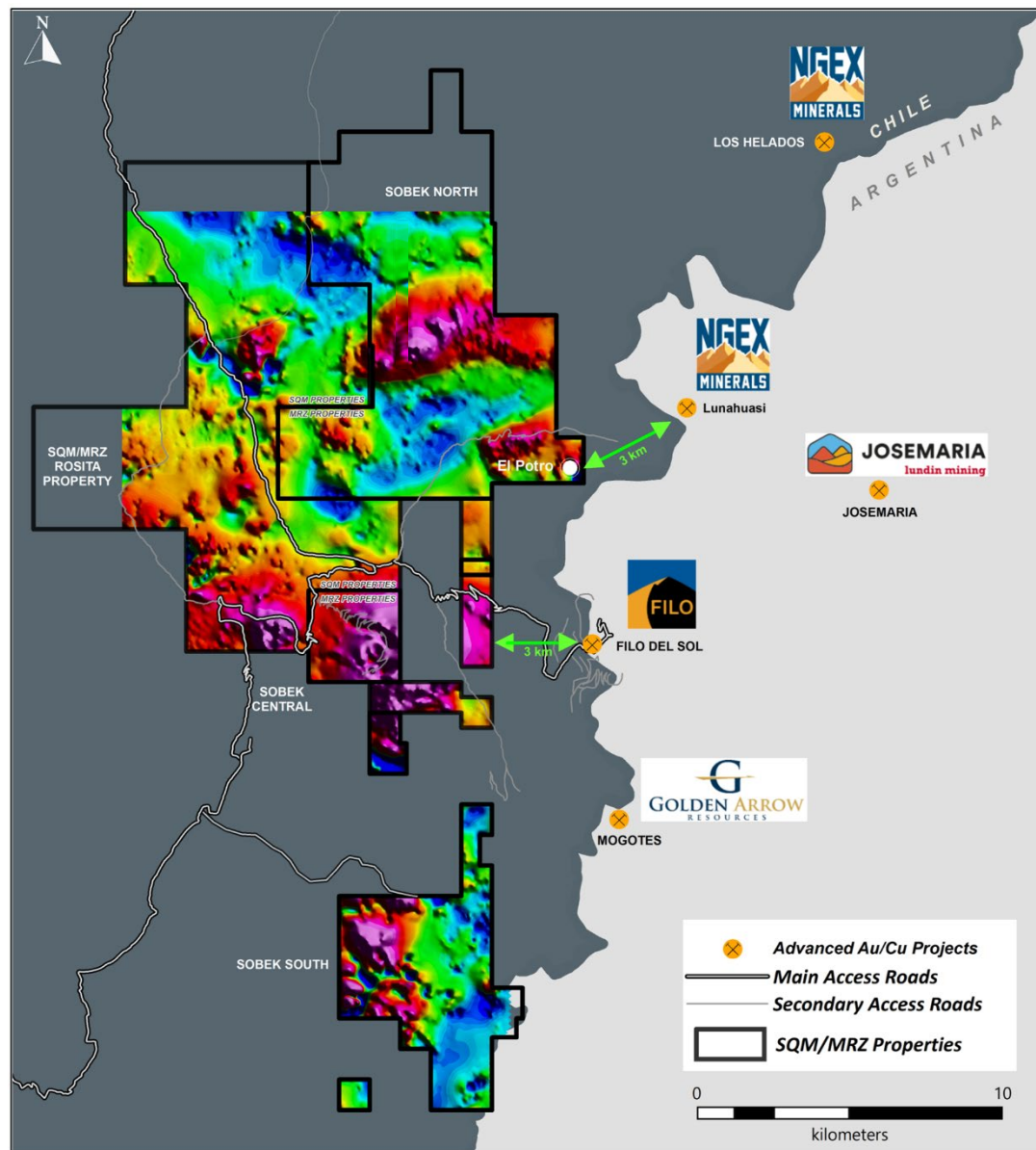
- \$4.5 B offer
- Largest purchase price for a copper junior
- Amplifies interest in our land position in the district

Vicuña District - Giant Copper-Gold District



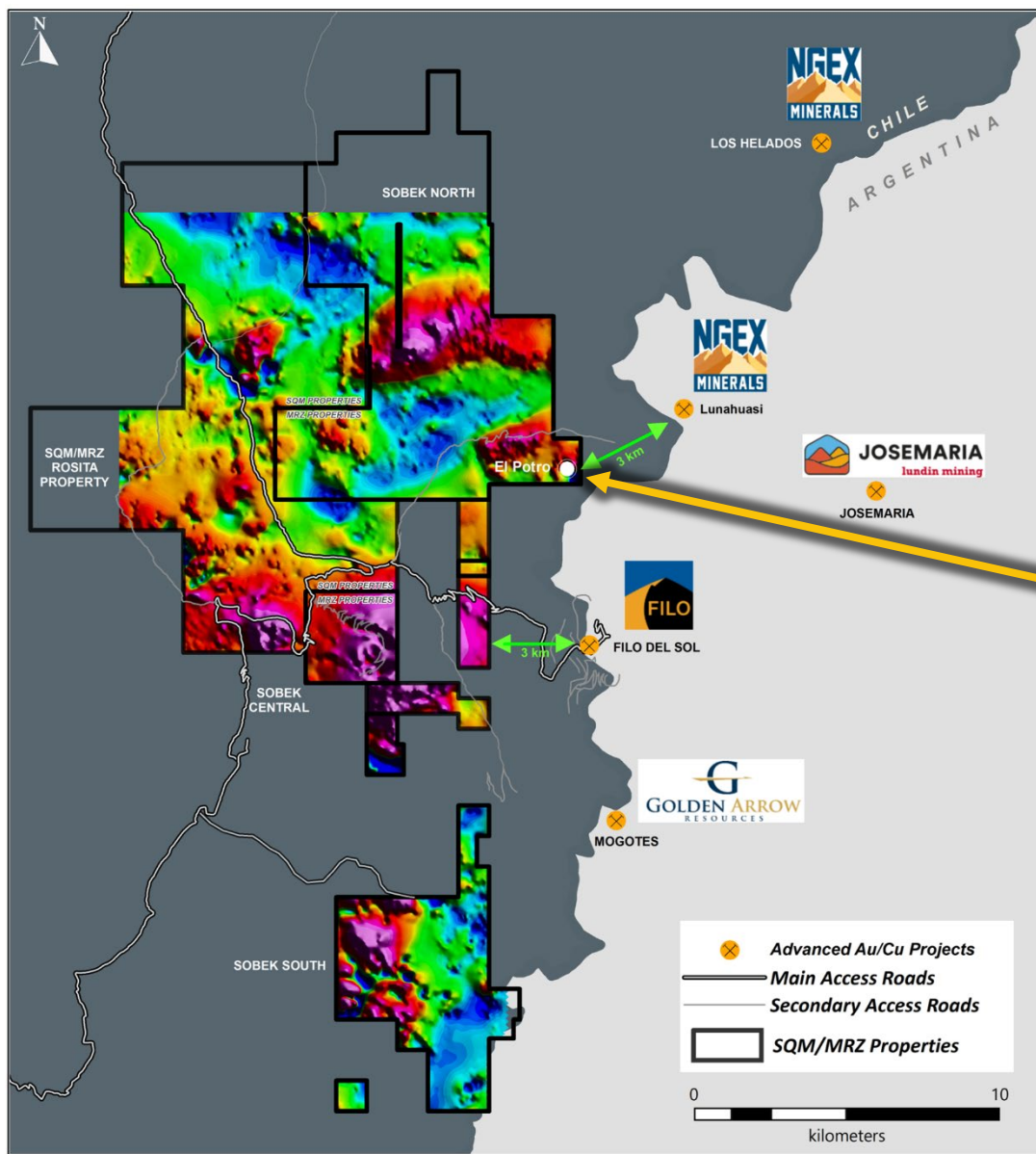
- Sobek & Rosita - located in the globally recognized Vicuña copper-gold district
- Mio-Pliocene age mineral belt, northern Chile
- 3 km west of Filo del Sol with Josemaria to the east and Los Helados to the north
- 3 km west of new Lunahuasi discovery by NGEx Minerals
- 11,140 ha, 100% owned Sobek Property
- 11,500 ha, 80% earn-in Rosita Property with SQM
- Porphyry Copper / HSE Gold Project
- Staked based on prospective local geology and structural architecture
- 3-hour drive from Copiapo along 114kms of paved highway, and 40kms of well-maintained gravel roads

Sobek & SQM Rosita – Advancing Towards Discovery

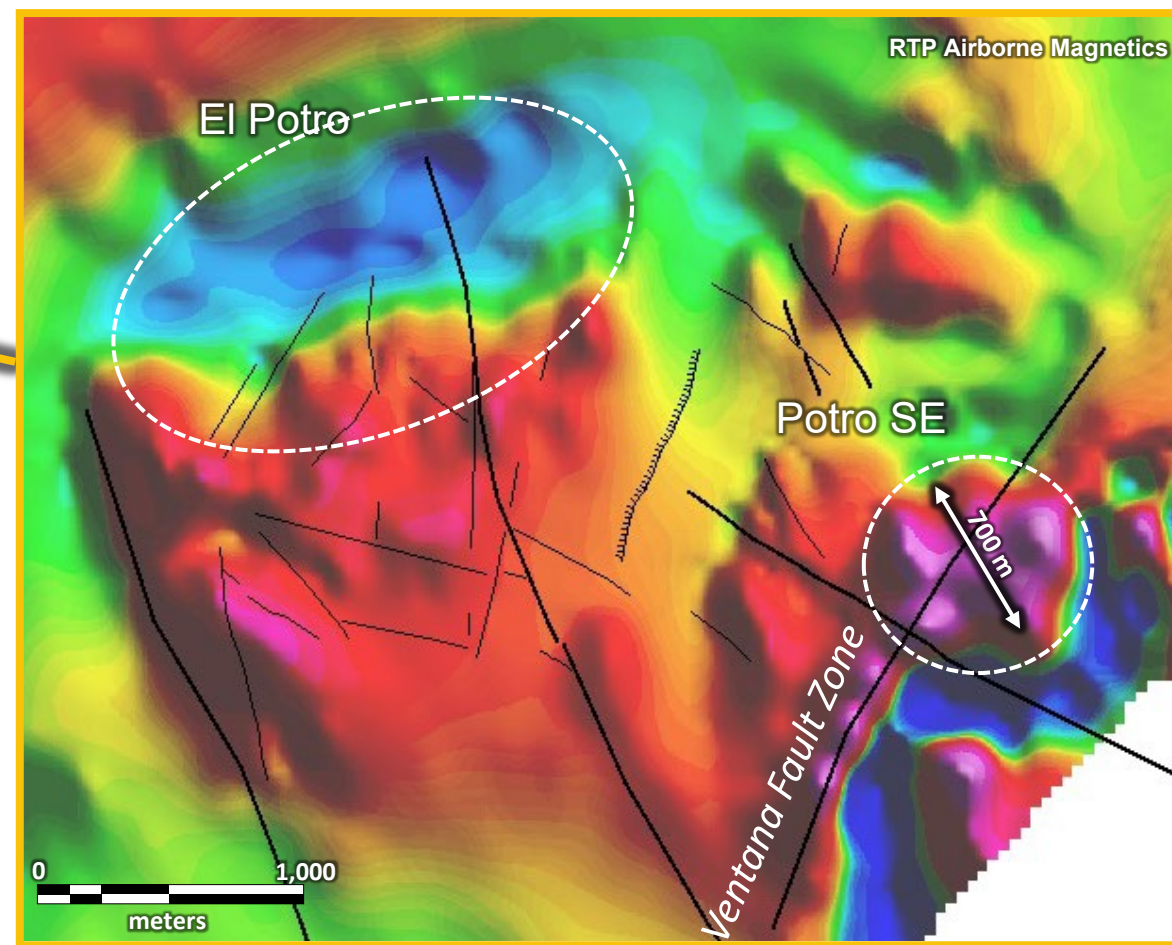


- Initial 2,700km regional Heli-Air Mag survey of the district
- Property wide reconnaissance level prospecting
- Property wide stream sediment geochemical sampling
- +500km Airborne Heli-MT survey
- Detail grid-based geochemical soil sampling El Potro & VN Zone
- Ground based Electrical IP/Gradient Array Geophysics (Resistivity/Chargeability)
- **Multiple Drill Targets Identified**

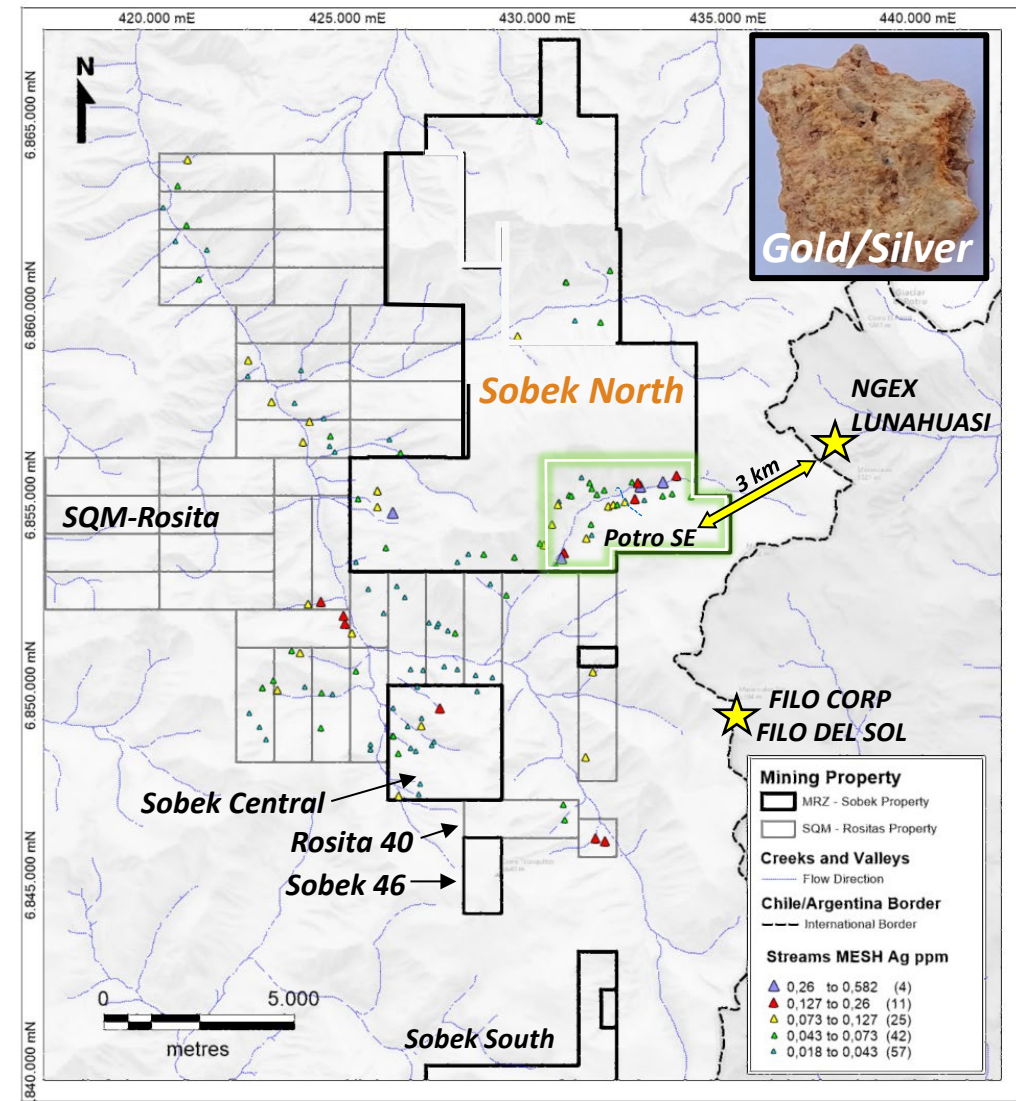
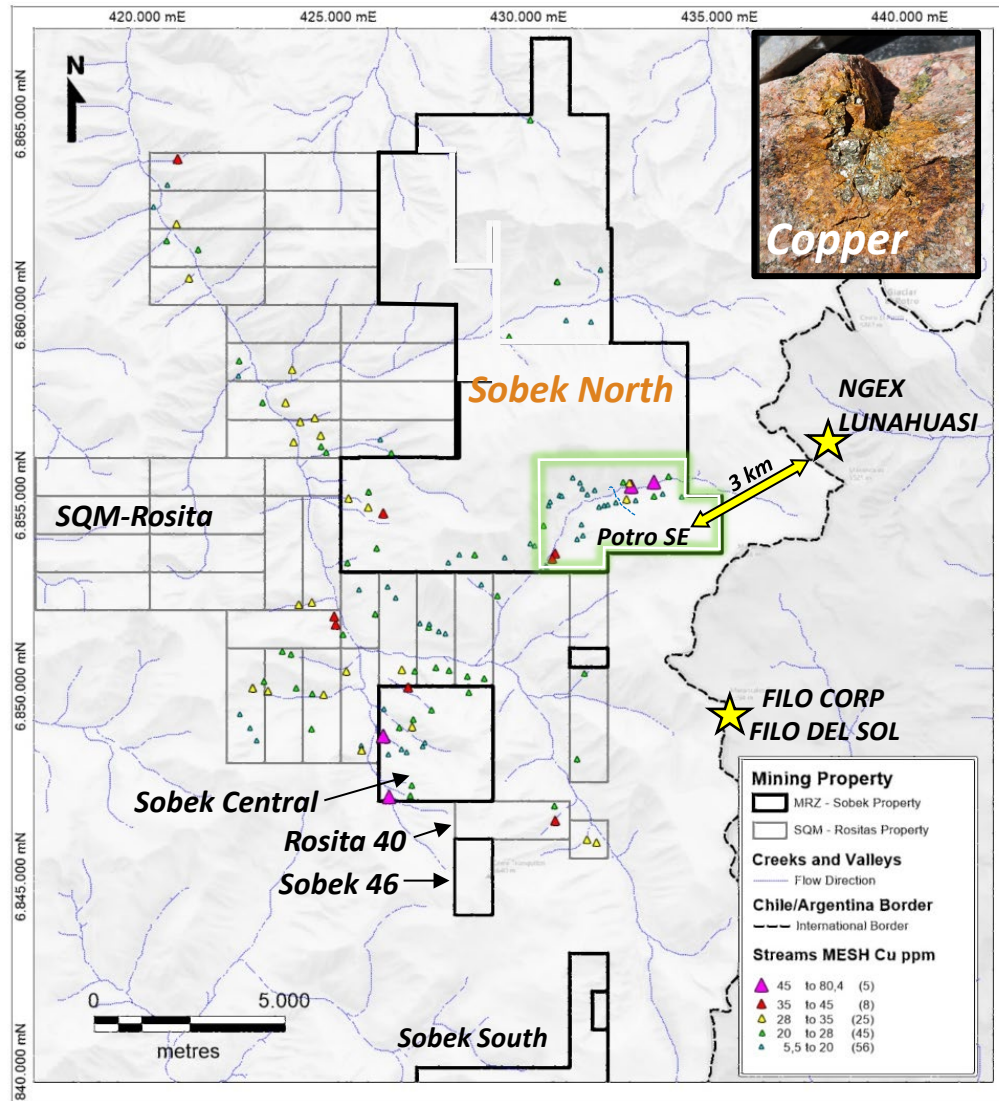
Sobek & SQM Rosita - Drilling High-Priority Targets



First Phase of Drilling Sobek North Block - Potro SE Target

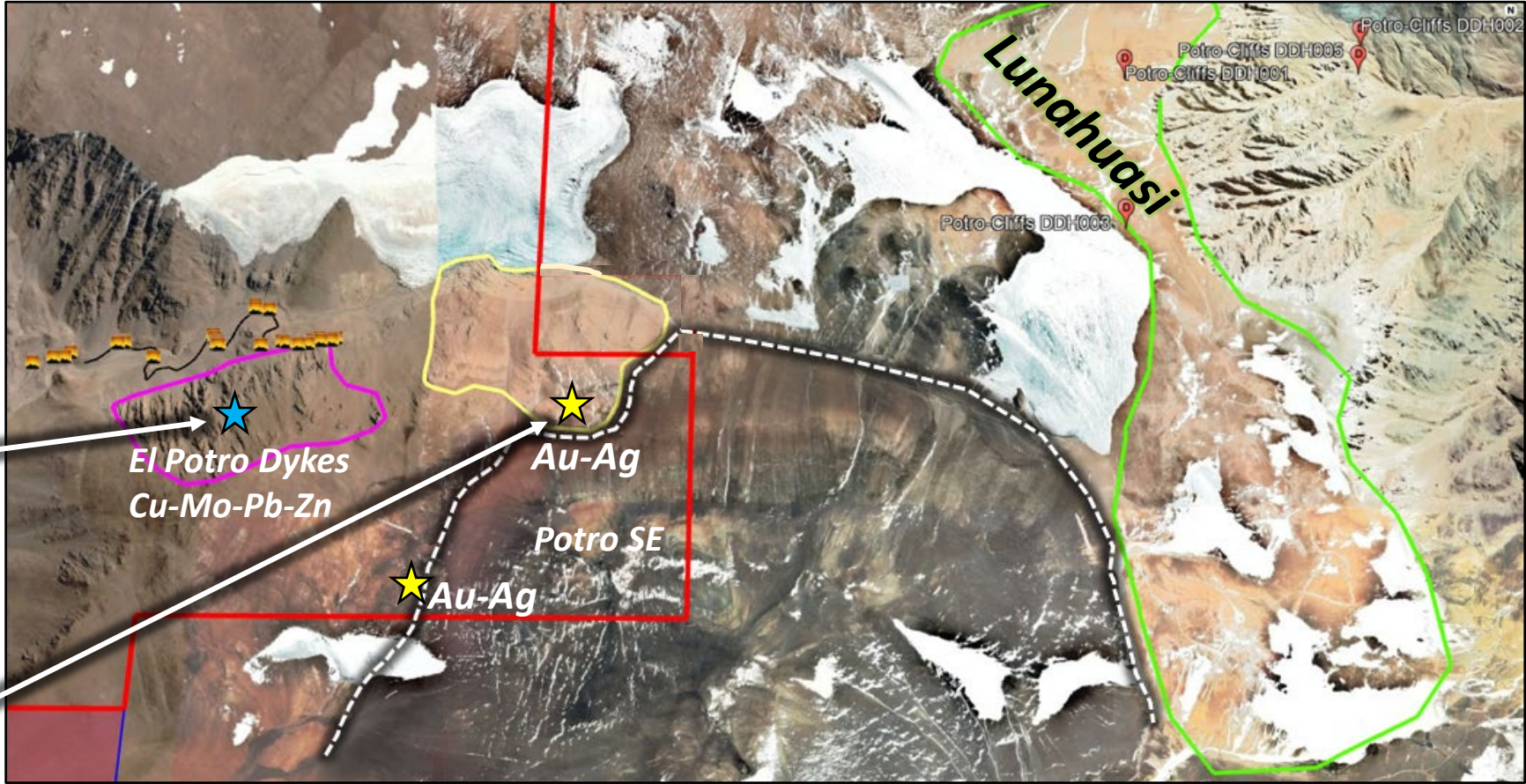
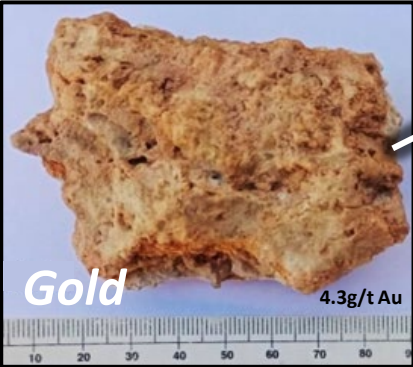
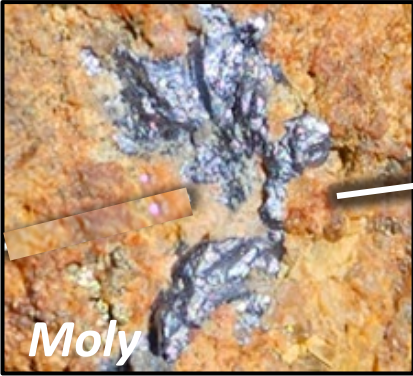


Sobek North - El Potro - Coincident Stream Sediments

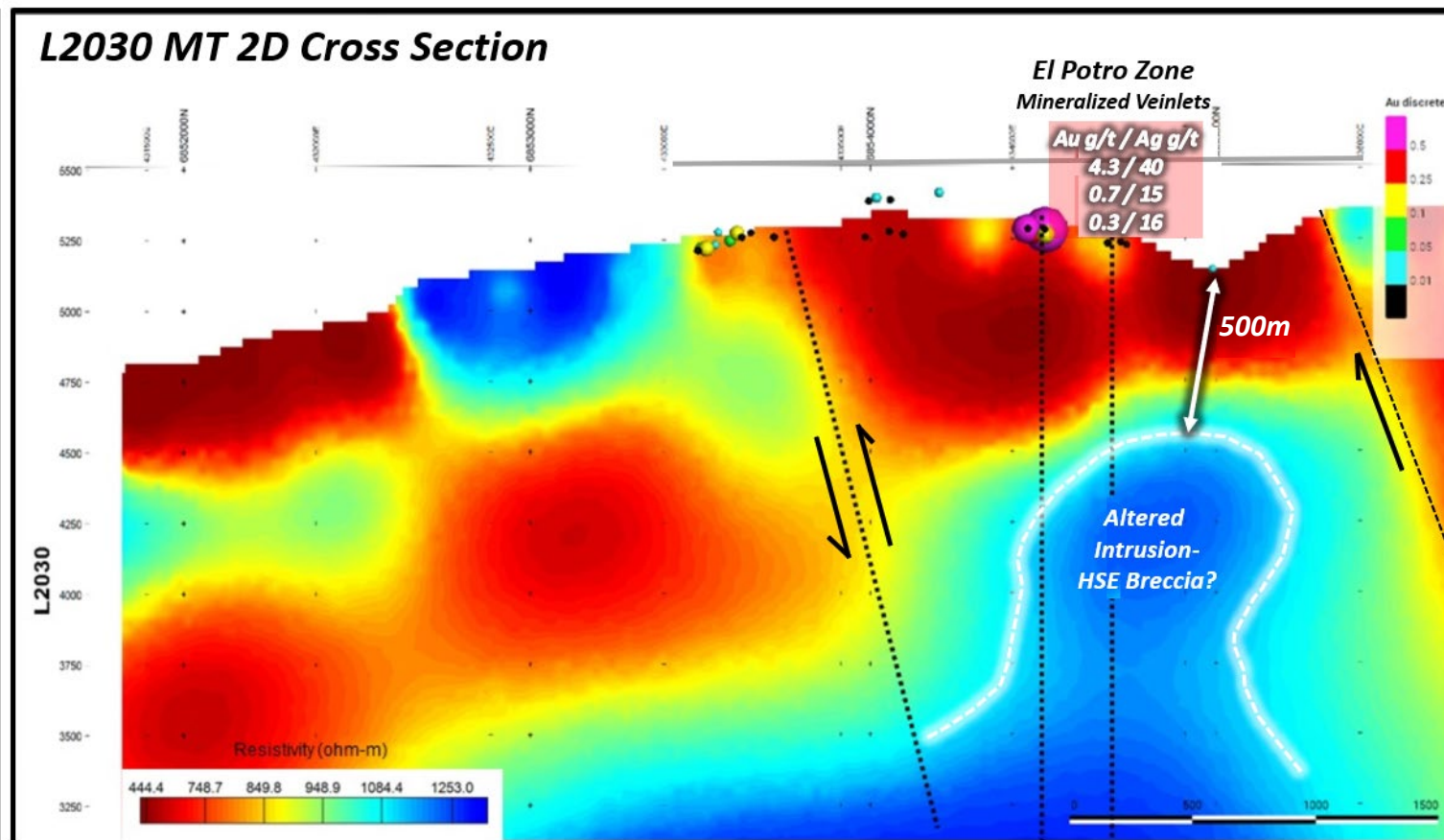
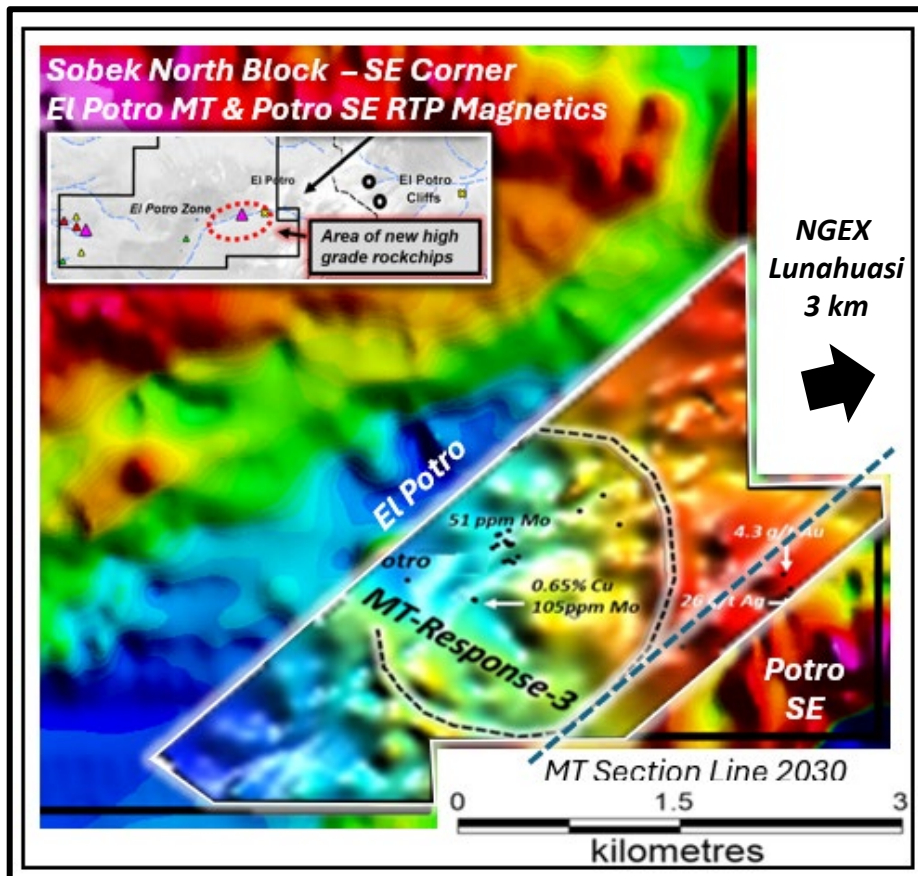


Vectored into the SE corner of Sobek North, into the El Potro area and finally into the Potro SE porphyry target

Sobek North - El Potro - Geology and Surface Samples



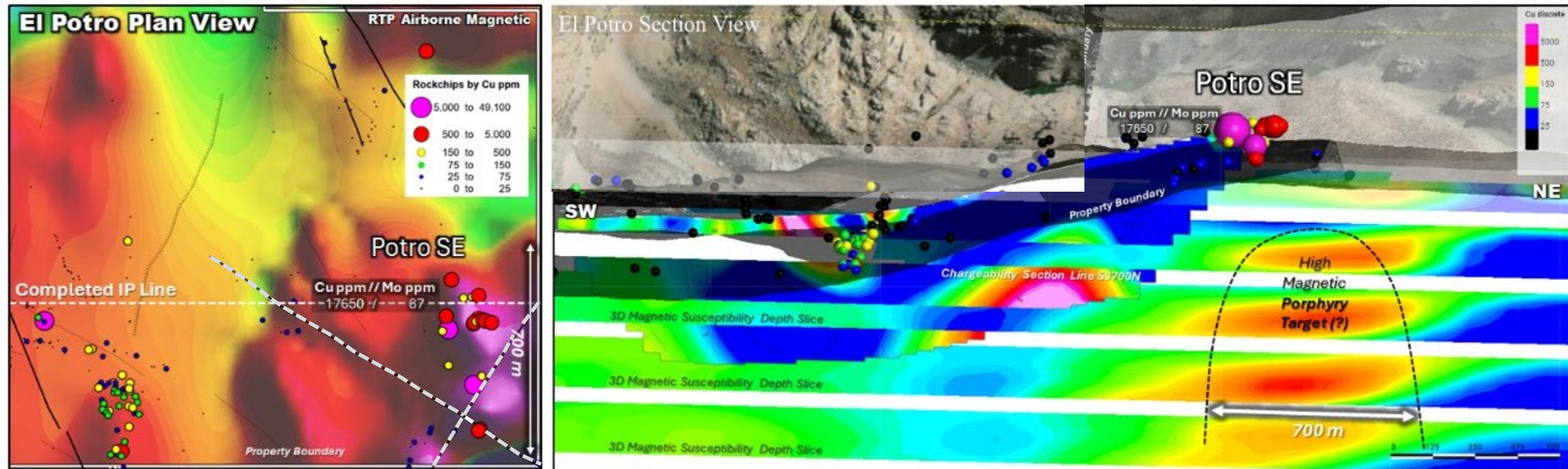
Sobek North - El Potro Prospect - New Priority Target



- New Potro SE porphyry target
- Coincident mag & soil/rock geochem anomaly with a good structural setting. No MT cover.

- 3km from NGEx discovery at Lunahuasi
- Small area of 13 km² Mobile MT Survey flown
- Select rock chip samples up to 4.3g/t Au and 25.9g/t Ag
- Still considered a quality drill target.

Sobek North – El Potro - New Potro SE Target

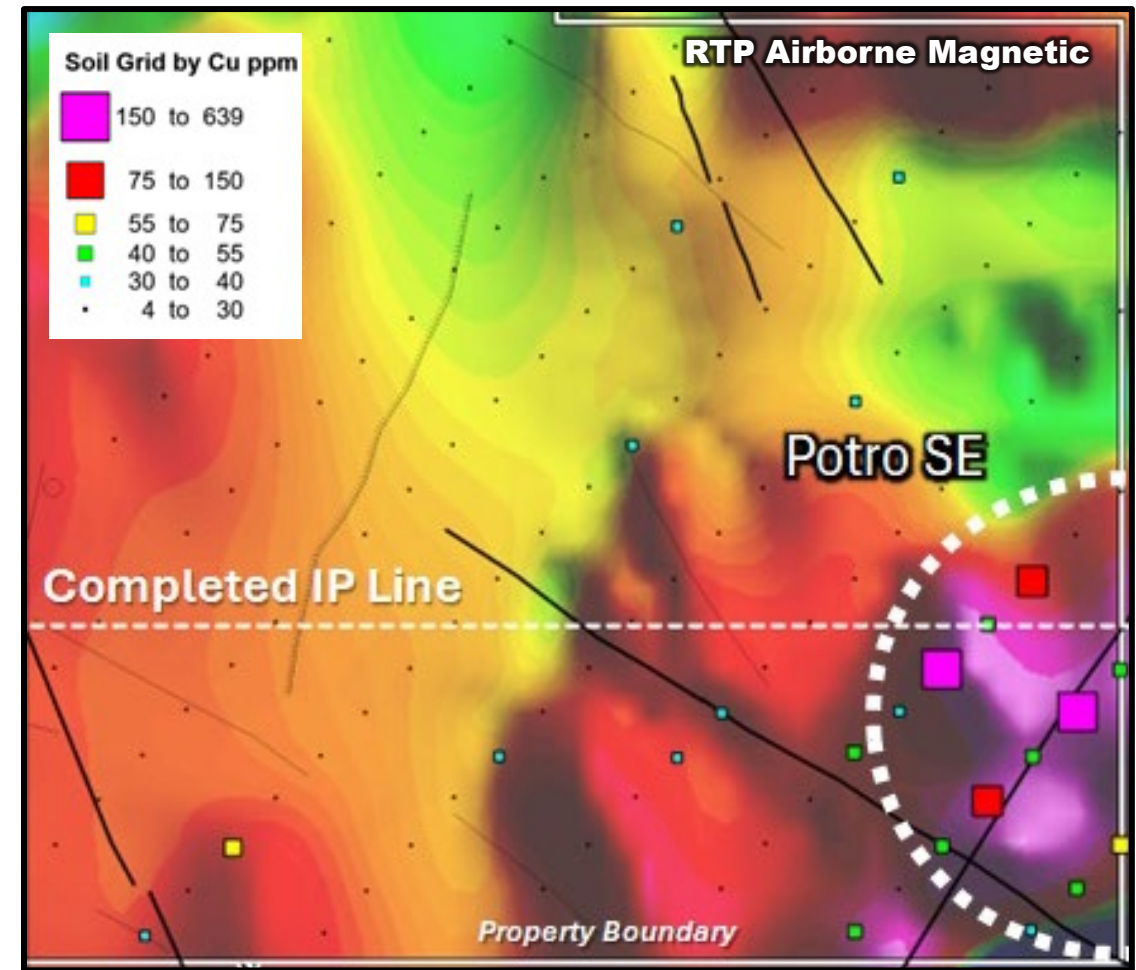
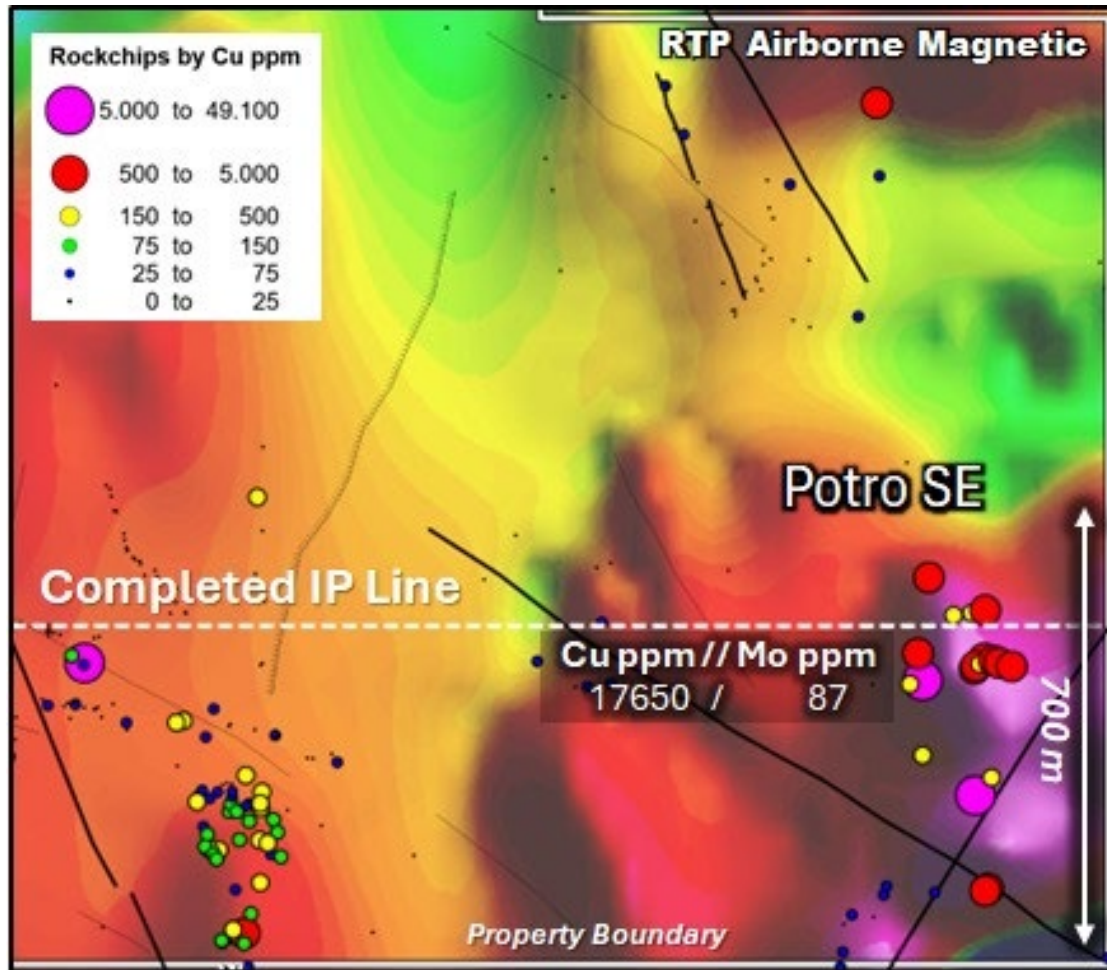


→ RTP Air Magnetics, POTRO SE high mag response with intersecting structures, and coincident rock and soil anomalies.

→ 700m wide, cylindrical Magnetic Susceptibility depth slices. Emergence of a strong IP-Chargeability residing below the strong Cu-geochemical anomaly.

Sobek North – New Potro SE Priority Target

Airborne Magnetic Target and Coincident Geochemical Anomalies



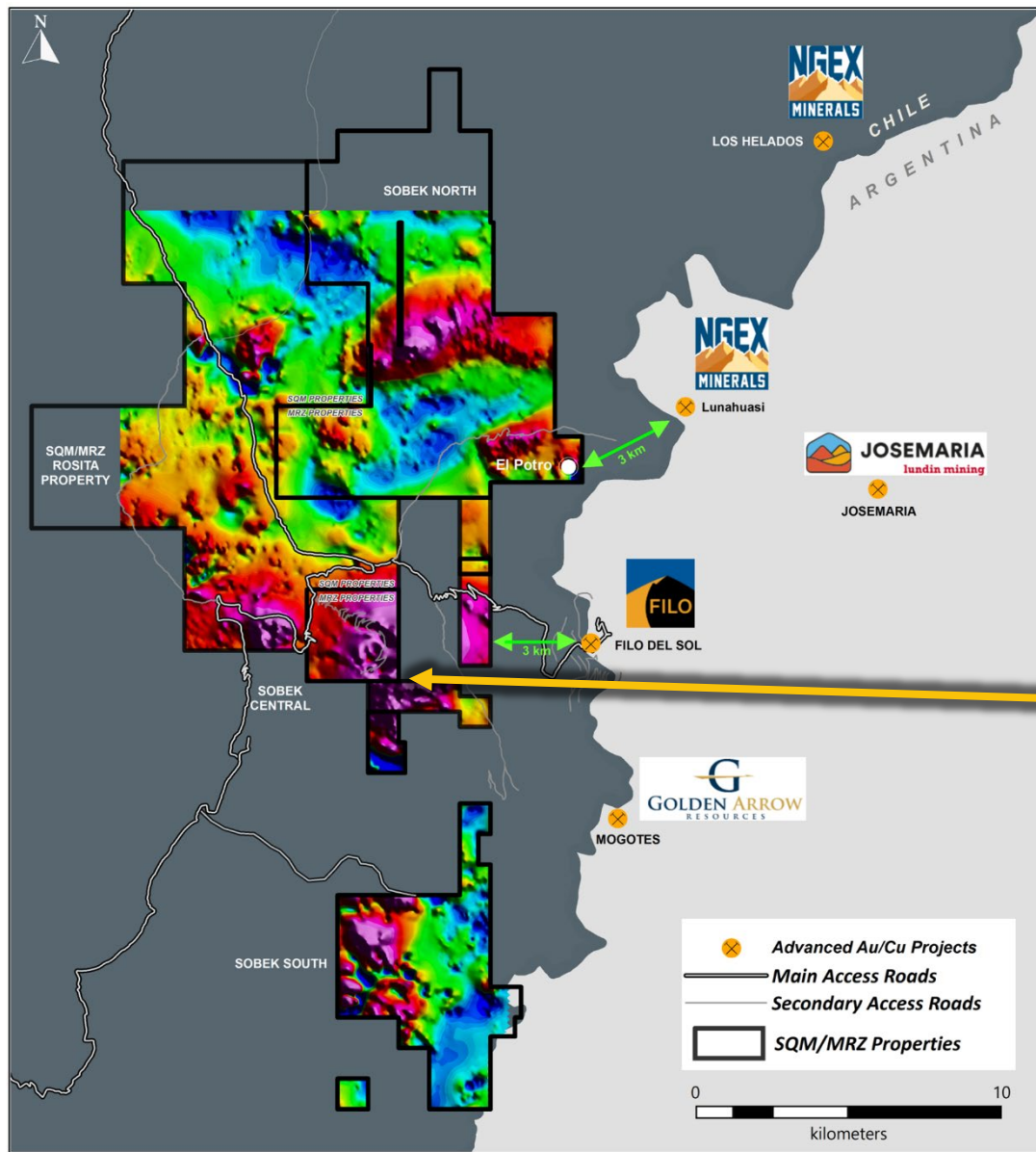
Completion of the remaining IP lines, both to the north and to the south of the current existing IP line will be the priority for the spring (Sept) exploration season

Sobek North - El Potro SE – Advancing to Drilling

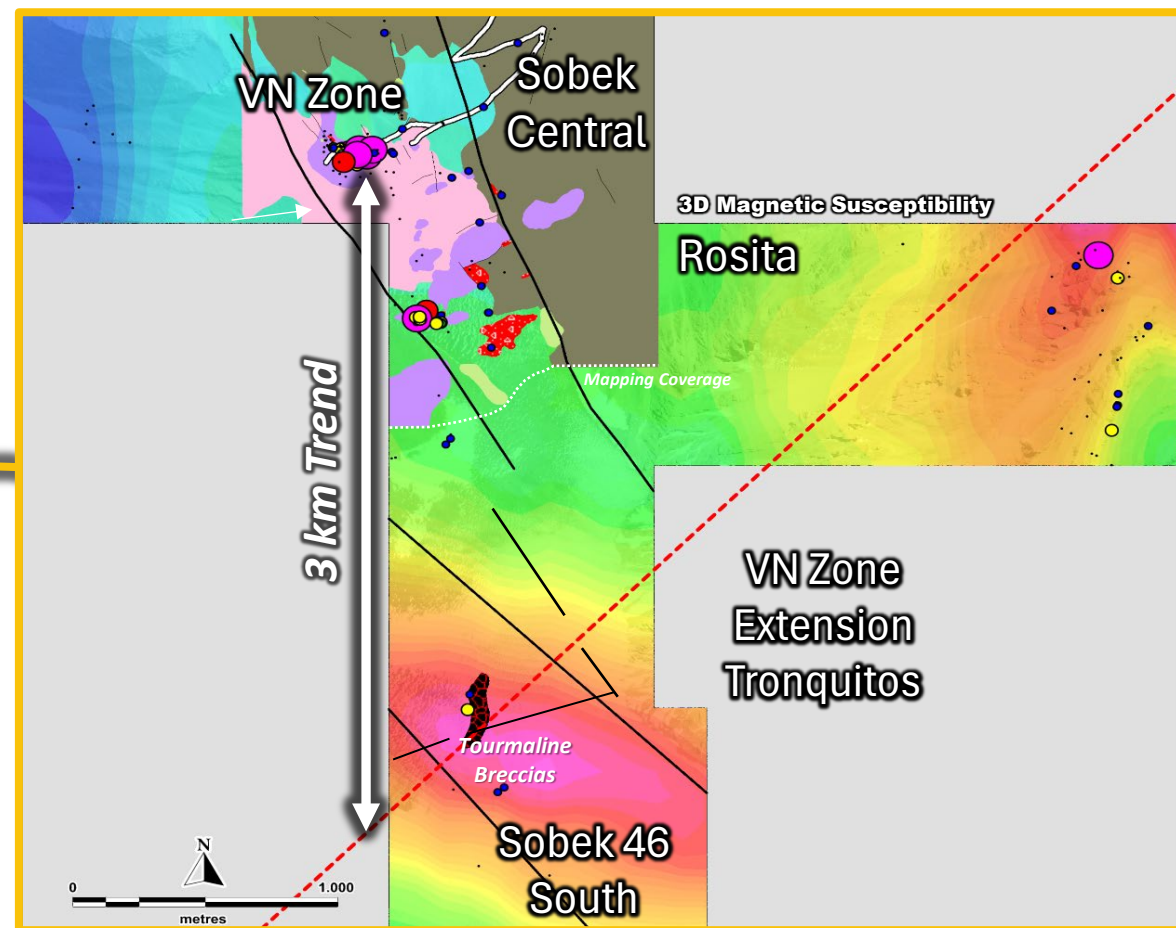


- ✓ Environmental clearance for Sobek North – “El Potro & SE”
 - ✓ Existing road clean-up and new access to El Potro
 - ✓ *New access road to “El Potro” has cut interesting copper mineralized fractures/veinlets in strong clay altered granitic intrusive rocks*
 - ✓ Detail geological mapping and sampling of the Cu-porphyry target at Potro East
 - ✓ Geophysical IP surveys completed testing the upper zones of the El Potro MT-Resistive anomaly (500-700m depth)
 - Geophysical IP surveys at the “**NEW**” Potro SE cylindrical magnetic target. Clipped an IP chargeability anomaly
 - 1,000- 1,500m proposed in 2 holes (Nov-2024)
- **First-Priority Drill Target for this Season**

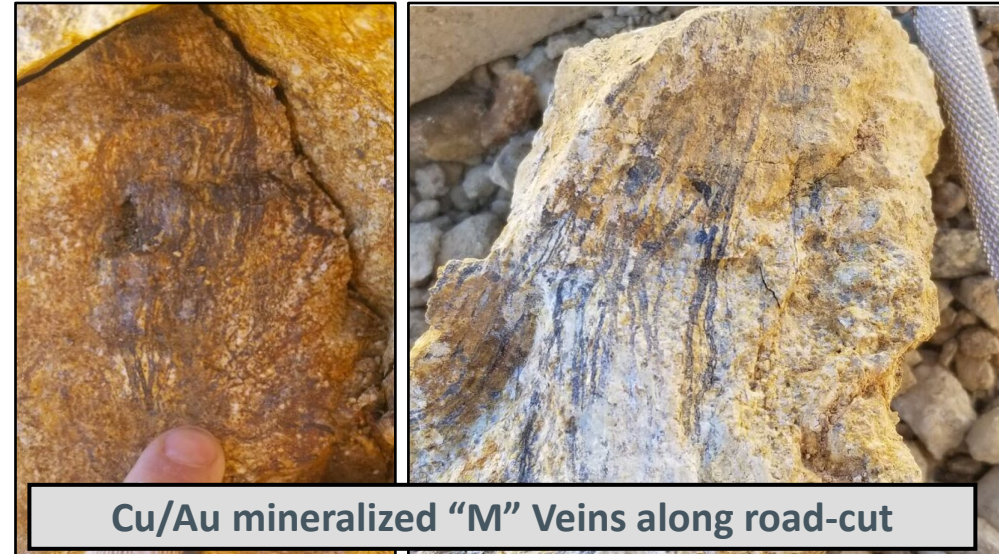
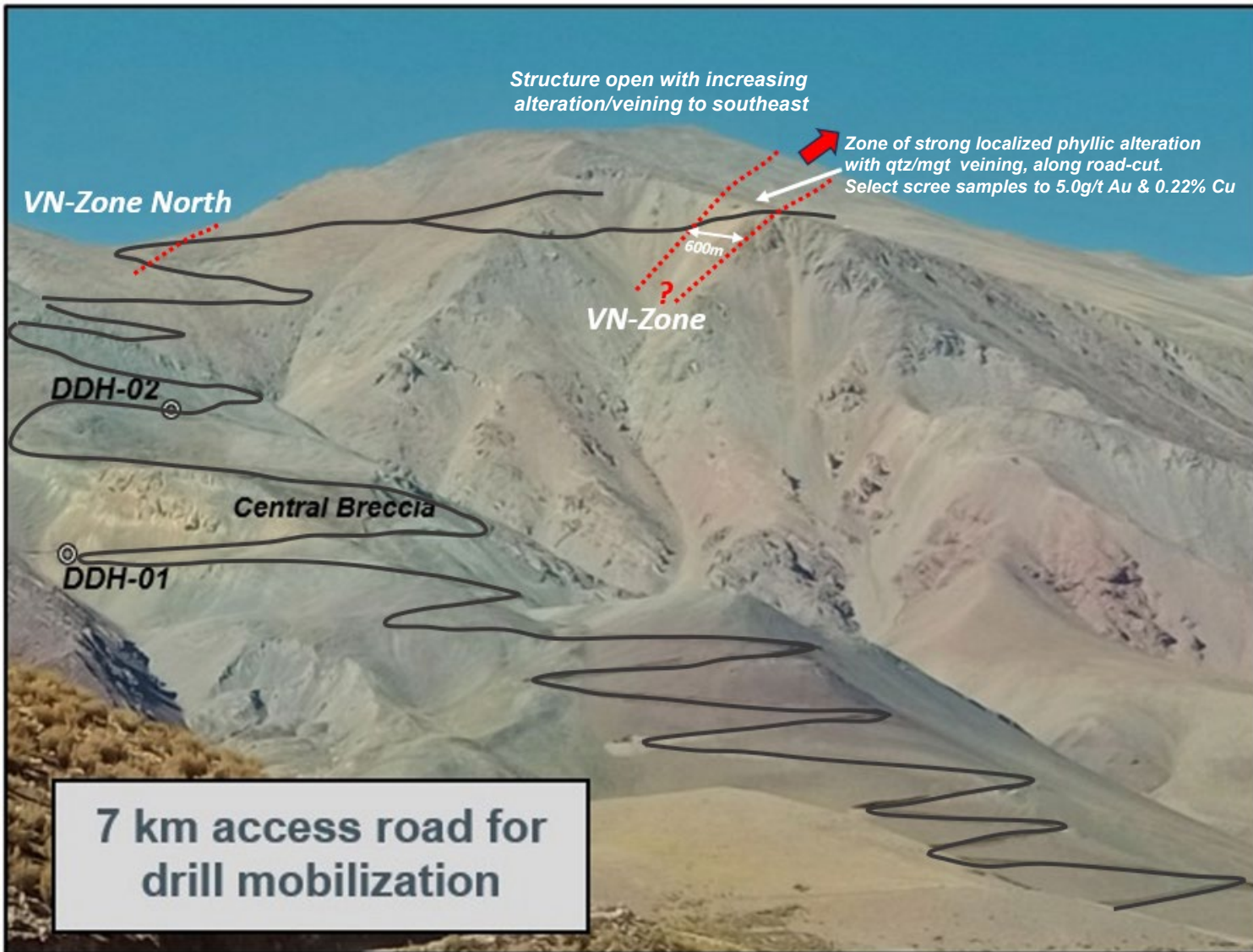
Sobek & SQM Rosita - Regional AirMag Survey



2nd Phase of Drilling Sobek Central – South VN Zone



Sobek - New Access Road to VN-Zone



Anomalous Gold in Select Rock Samples from the VN Zone

Sample	Au-ppm	Cu-ppm
MCR0024669	0.241	234.00
MCR0025102	1.610	767.00
MCR0025103	1.040	260.00
MCR0025104	0.123	100.00

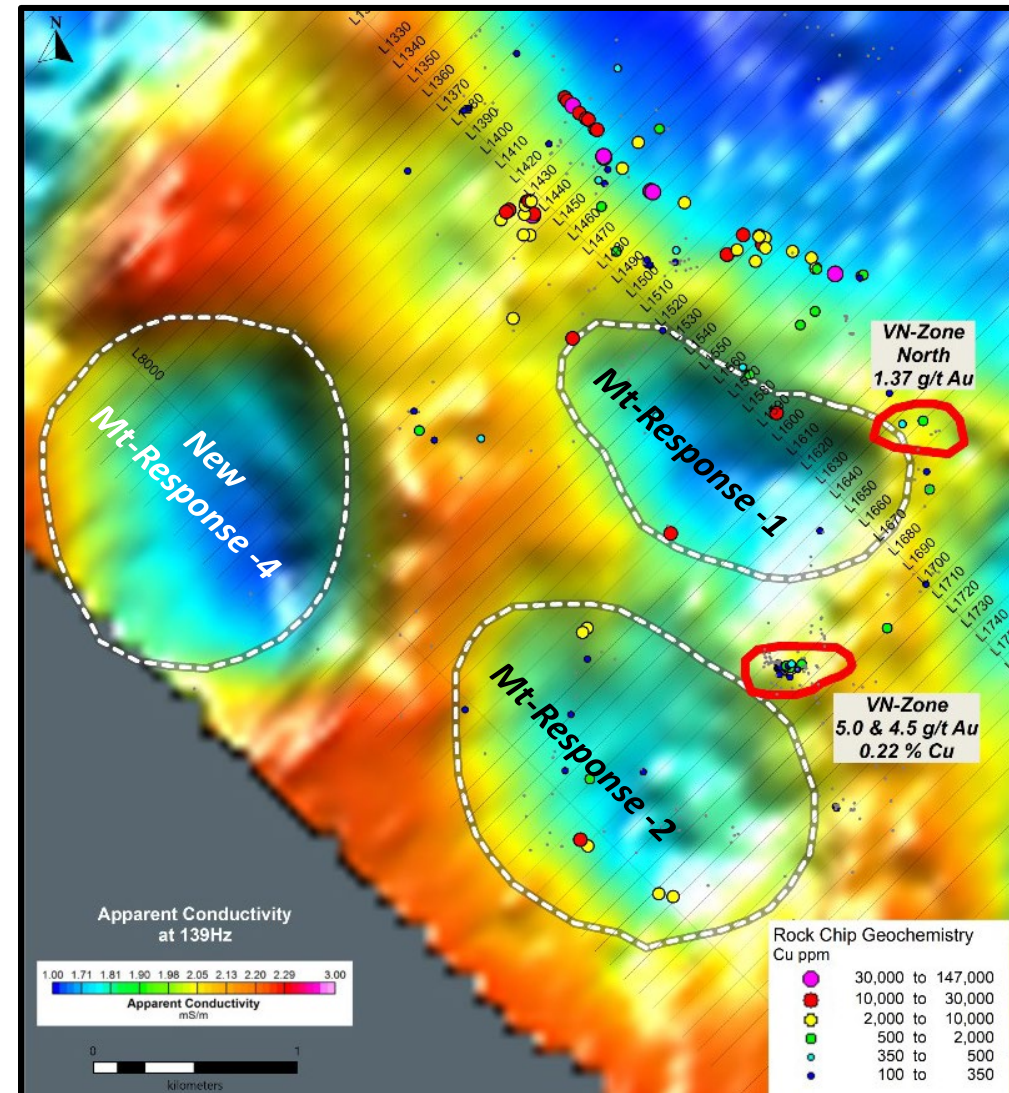
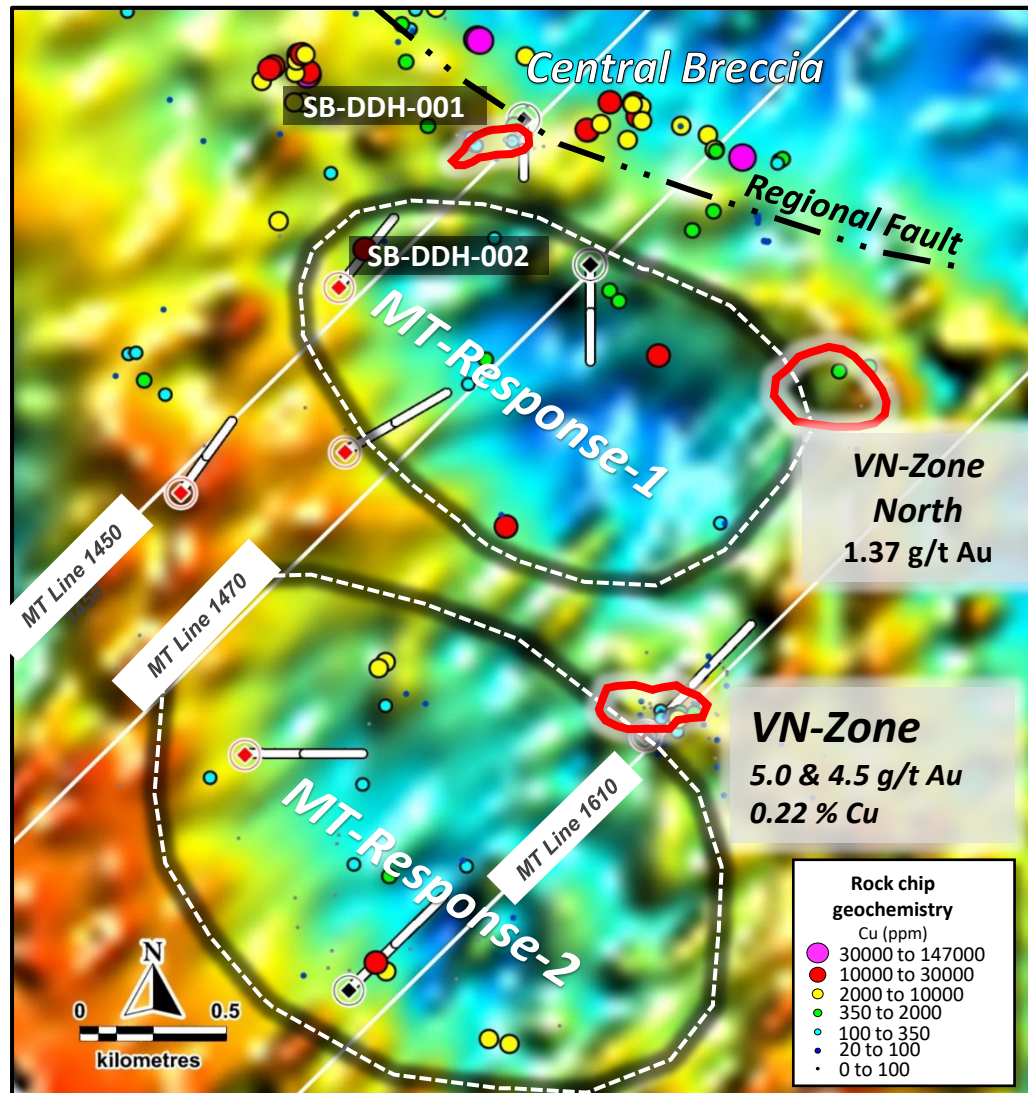
Petrology Sample MCR0025103

Recent Samples from the VN Zone

up to **5.0 g/t Au** & **0.22% Cu**

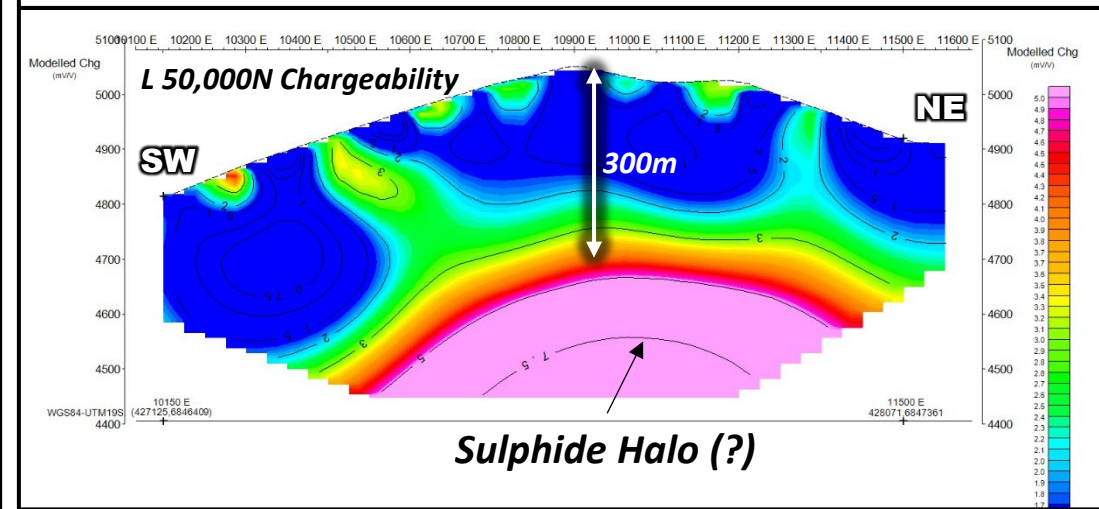
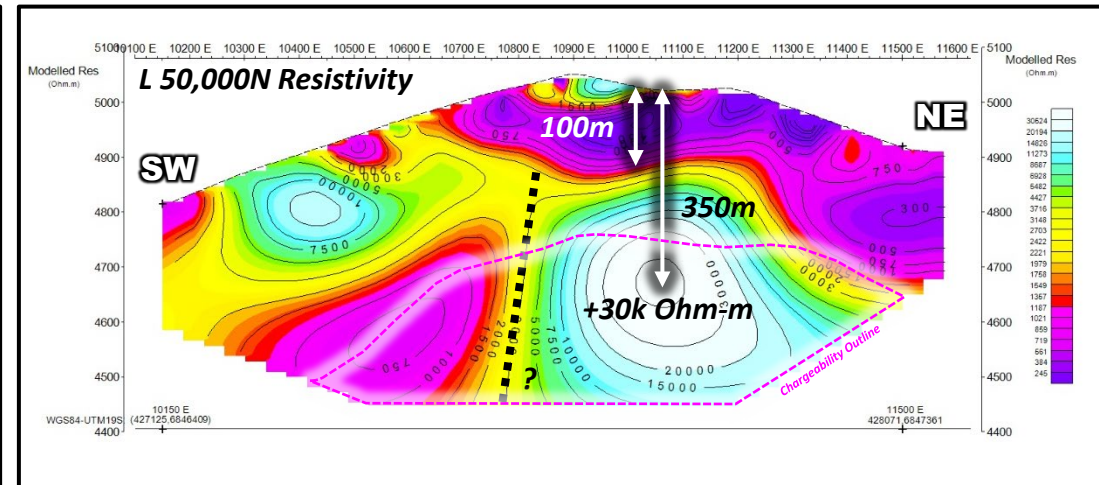
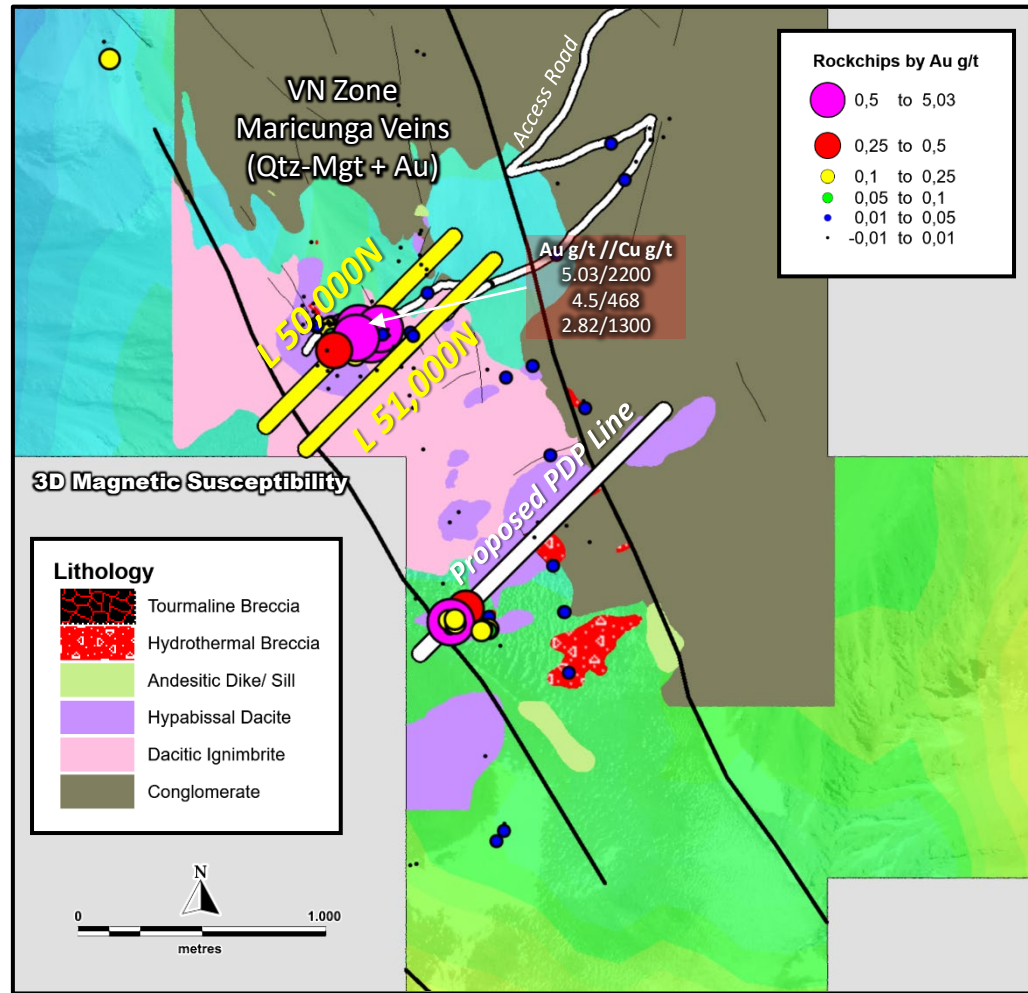
→ Electrical IP Pole-Dipole Geophysical survey to continue at VN-Zone to Sobek 46

Sobek - Mobile MT Survey – “Cluster” of Oval MT-Targets



Additional larger and stronger MT target to evaluate to the west

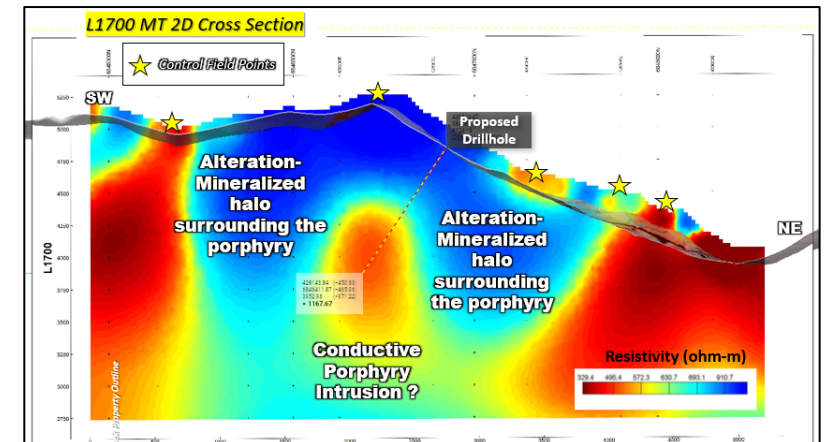
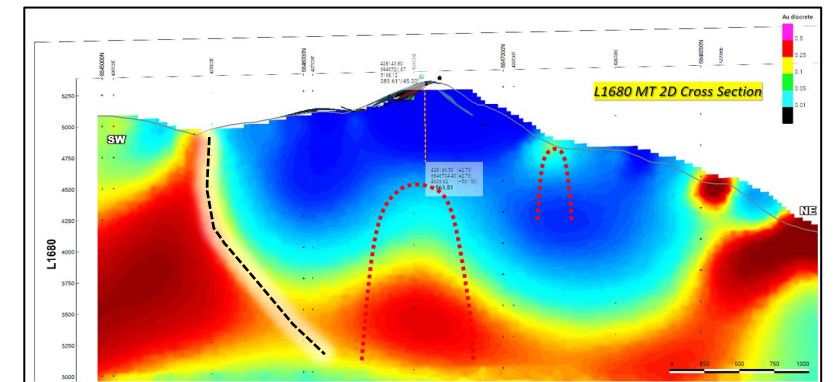
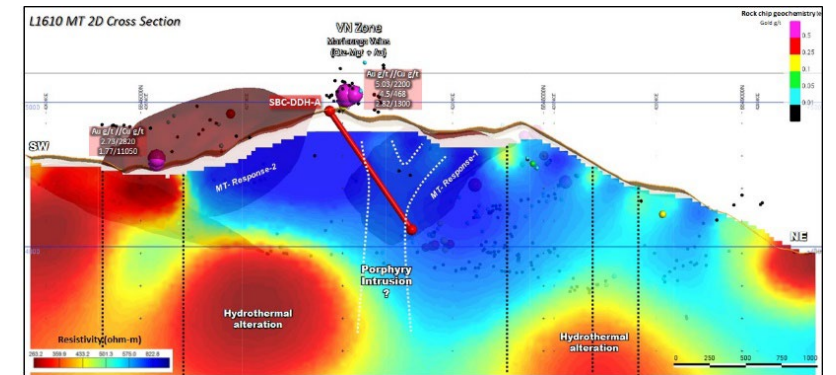
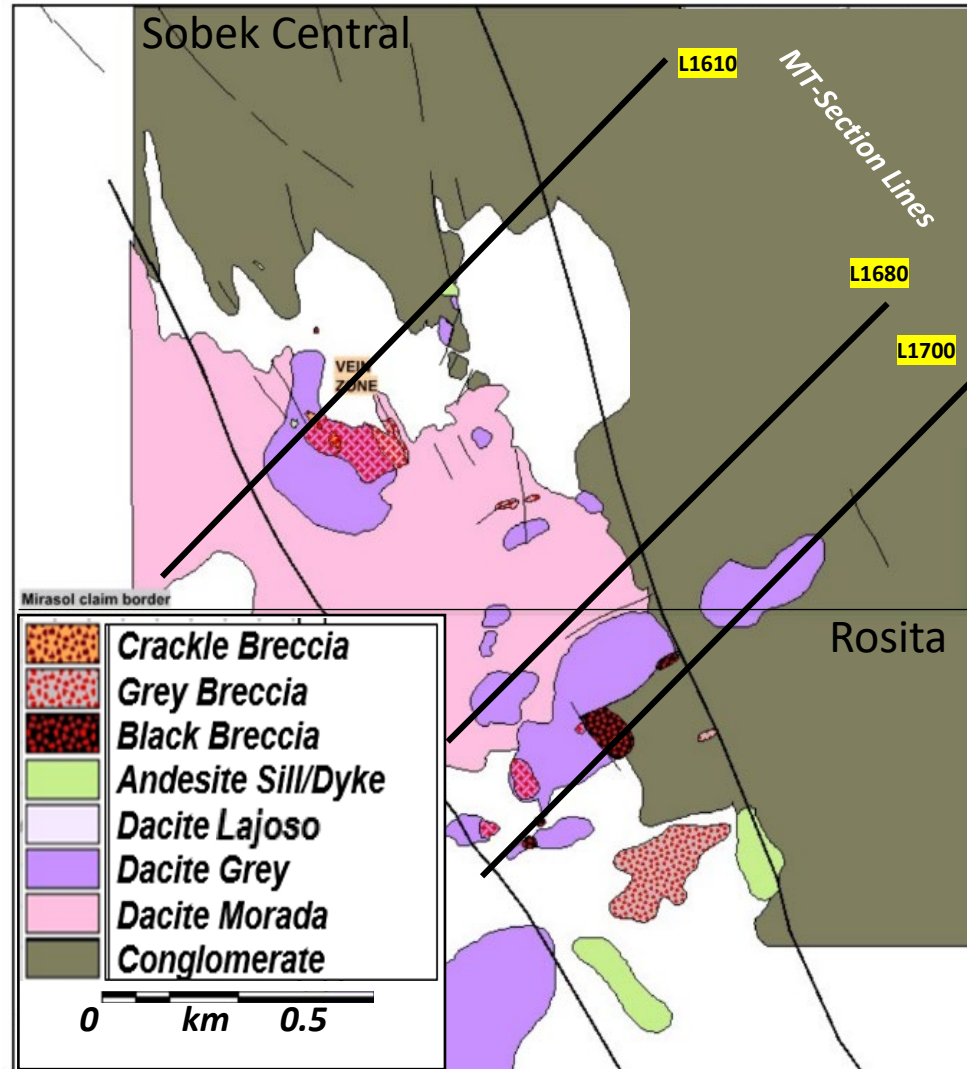
Sobek – VN-Zone Cross Section– Underlying IP Geophysics



Mirasol Inhouse IP - Electrical Geophysical lines at Sobek Central, VN-Zone

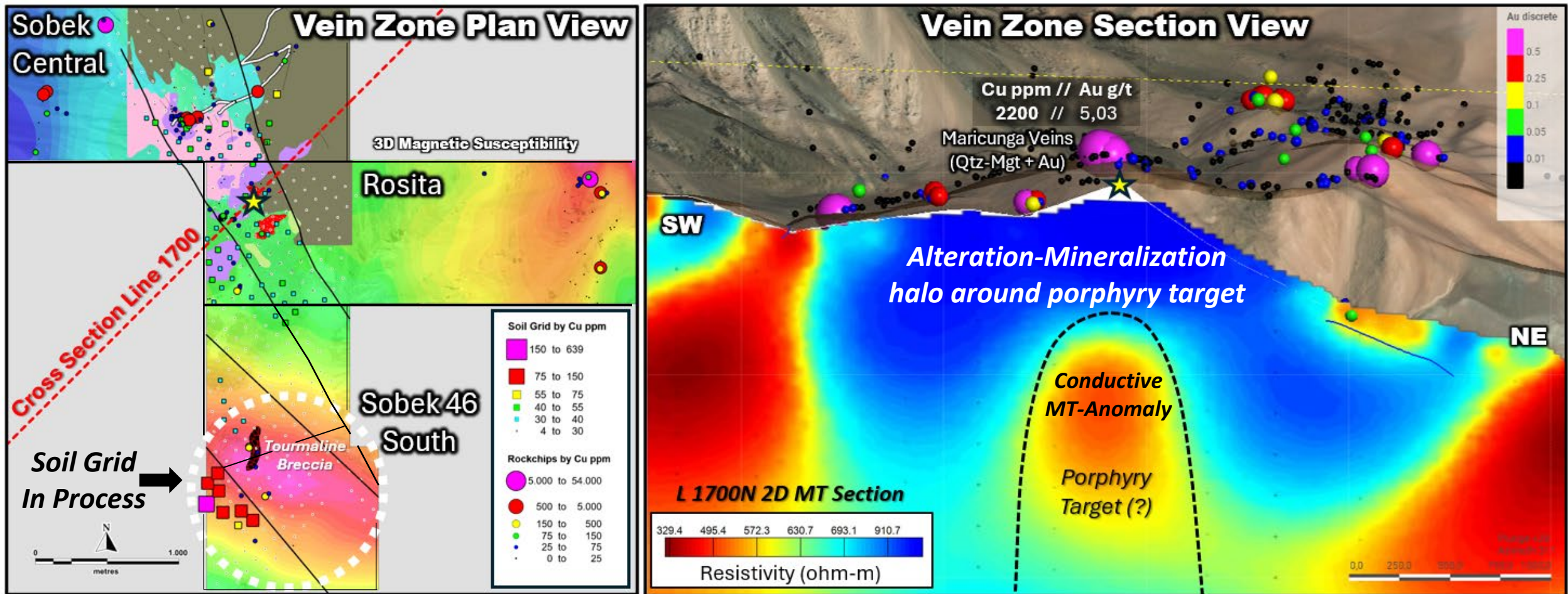
Sobek – VN-Zone and South Extensions (Tronquitos)

Local Geology & Airborne MT Sections



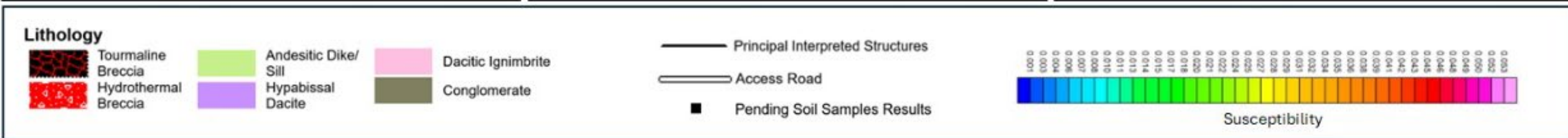
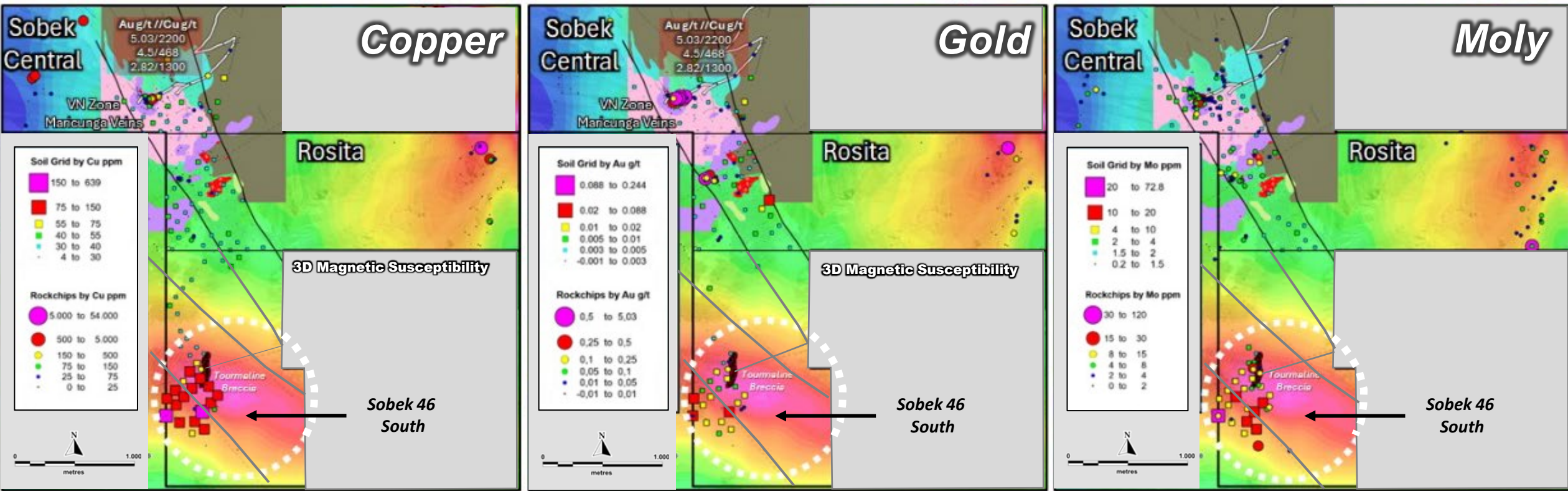
Sobek – VN-Zone and South Extensions

Airborne MT Sections & Local Geology/Geochemistry



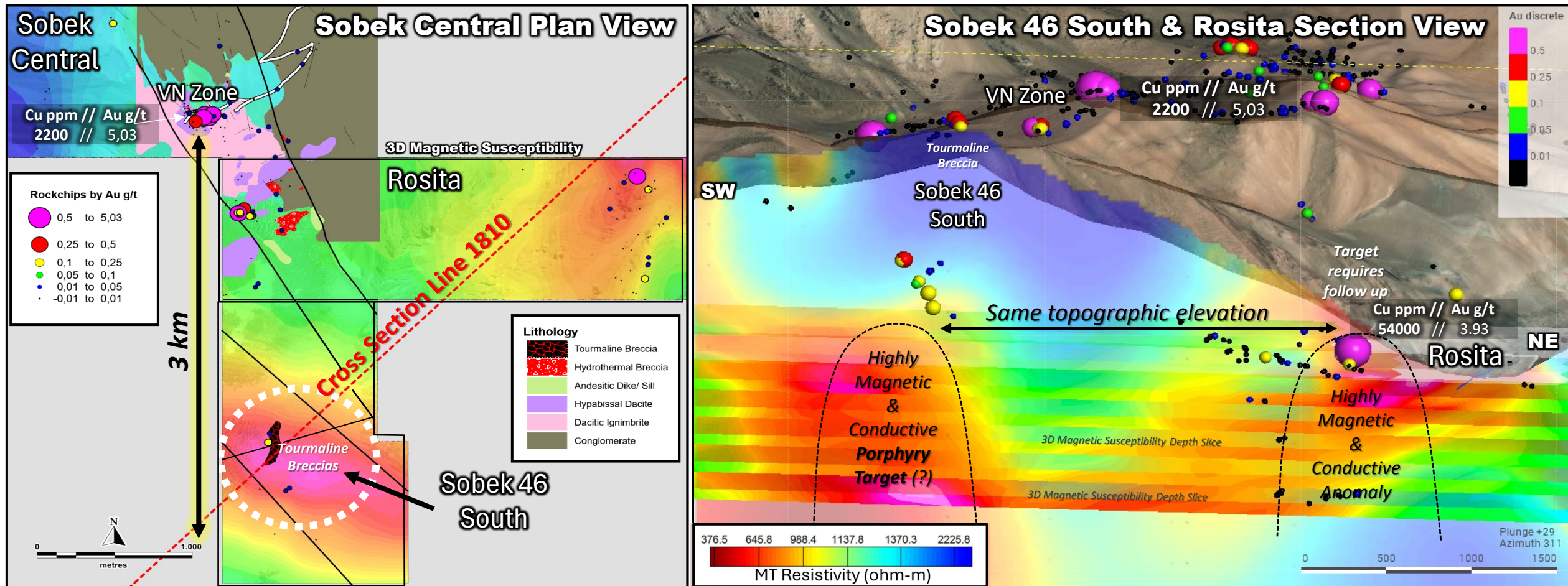
Sobek - VN Zone Extension – Rosita and Sobek 46-S

Coincident Magnetic Susceptibility – Soil/Rockchip Geochemistry



Sobek - VN Zone Extension – Rosita and Sobek 46 South

Magnetic Susceptibility – MT Conductivity

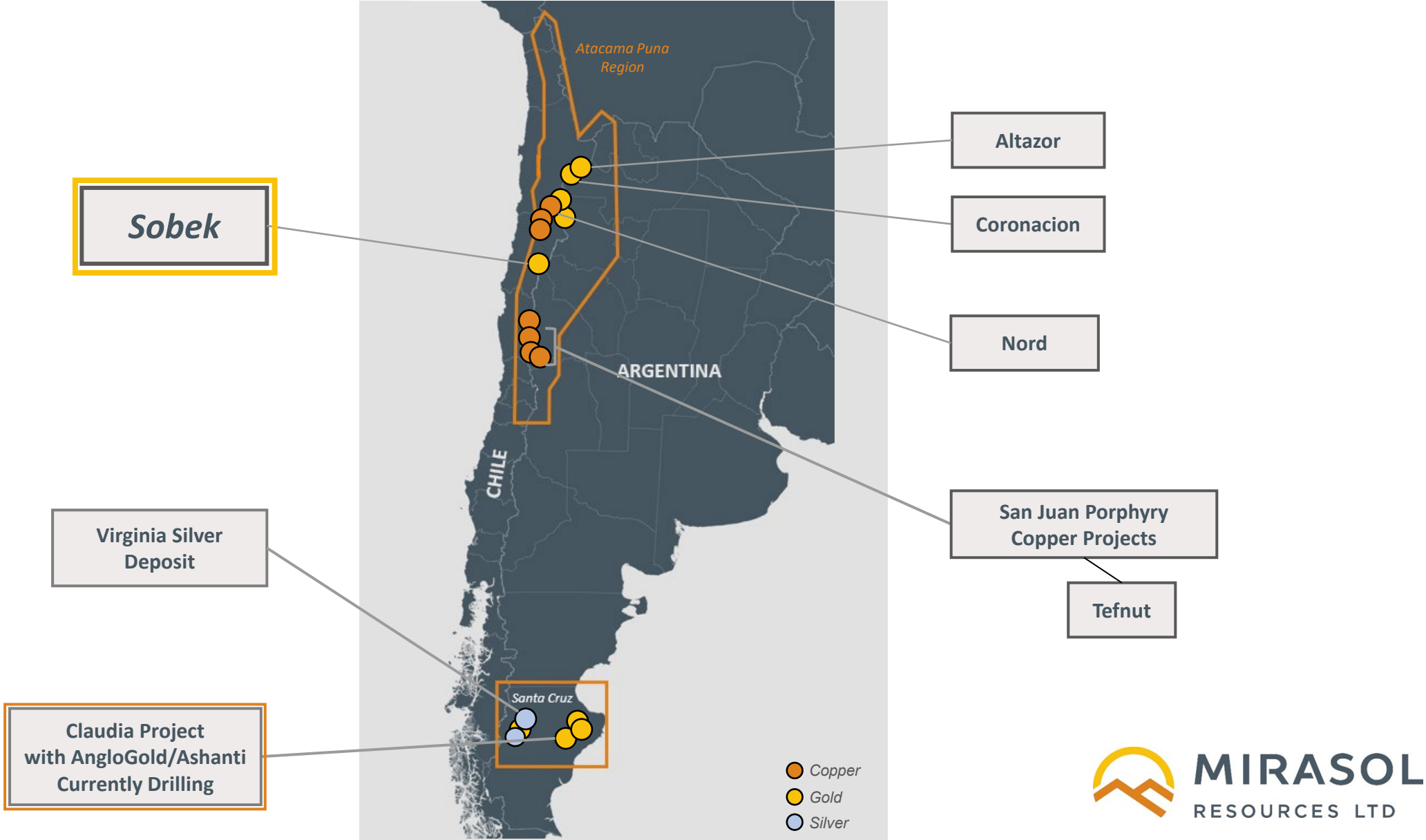


Sobek Central - VN-Zone South - **Advancing to Drilling**



- ✓ Environmental clearance obtained for VN-Zone south extension into the Rosita and new Sobek 46 South claims
- ✓ Stream sediment sampling program & prospecting including Rosita and new Sobek 46 South claim blocks
- ✓ Detail geological and structural mapping
- Extend road access to the VN Zone south extension
- Resume geochemical soil survey grid and alteration analysis
- Continue IP geophysics to define and refine targets
- Advancing to maiden drill program at the South VN-Zone
 - 1,000- 1,500m proposed in 2 holes (Q1-2025)
- **Refining Drill Targets for Final Evaluation**

Pipeline of Opportunities - Unlocking Value from Portfolio



Upcoming Catalysts - Potentially Pivotal News Flow

- **Start 24/25 Exploration Program**
- **Drill Sobek North - Potro SE target
~Nov '24**
- **Drill Results from Sobek North**
- **Drill Sobek Central - South VN Zone target
~Feb/Mar '25**
- **Drill Results from Sobek Central**



Appendix



Sobek Project, Chile

Board of Directors

Management Team



Nick DeMare

Director

- Chartered Professional Accountant
- Over 30 years of accounting, management and securities regulatory compliance experience



Diane Nicolson

Director

- B.Sc. in Geology and a PhD in Economic Geology
- Over 20 years of experience in mineral exploration especially in Latin America



Tim Moody

Director

- B.Sc. in Geology and Geophysics
- Over 30 years of experience in the mining industry, with expertise in mineral exploration, resource assessment, business development and corporate strategy



John Tognetti

Director

- Over 30 years of experience in the finance industry
- Leading financier of the global resource sector



Tim Heenan

President, CEO & Director

- Over 30 years of exploration & operating experience in Central and South America
- Involved in several high-profile projects including the famous Cerro Negro Mining District in Argentina



Troy Shultz

VP Investor Relations

- Over 15 years of investor relations experience in the mining industry
- Including Pretium Resources as the Brucejack Mine progressed from permitting to production and acquisition by Newcrest Mining

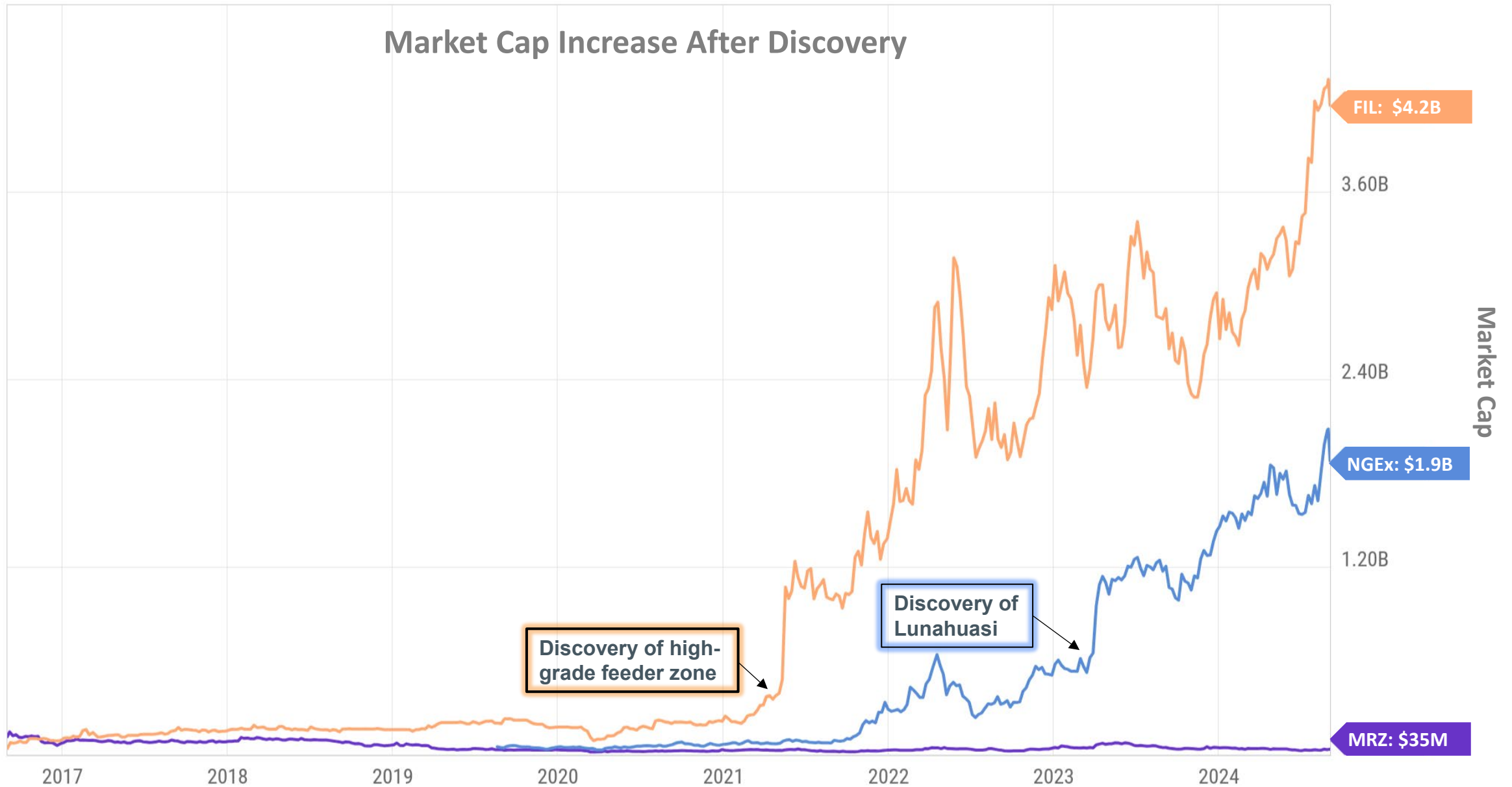


Carmen Cazares

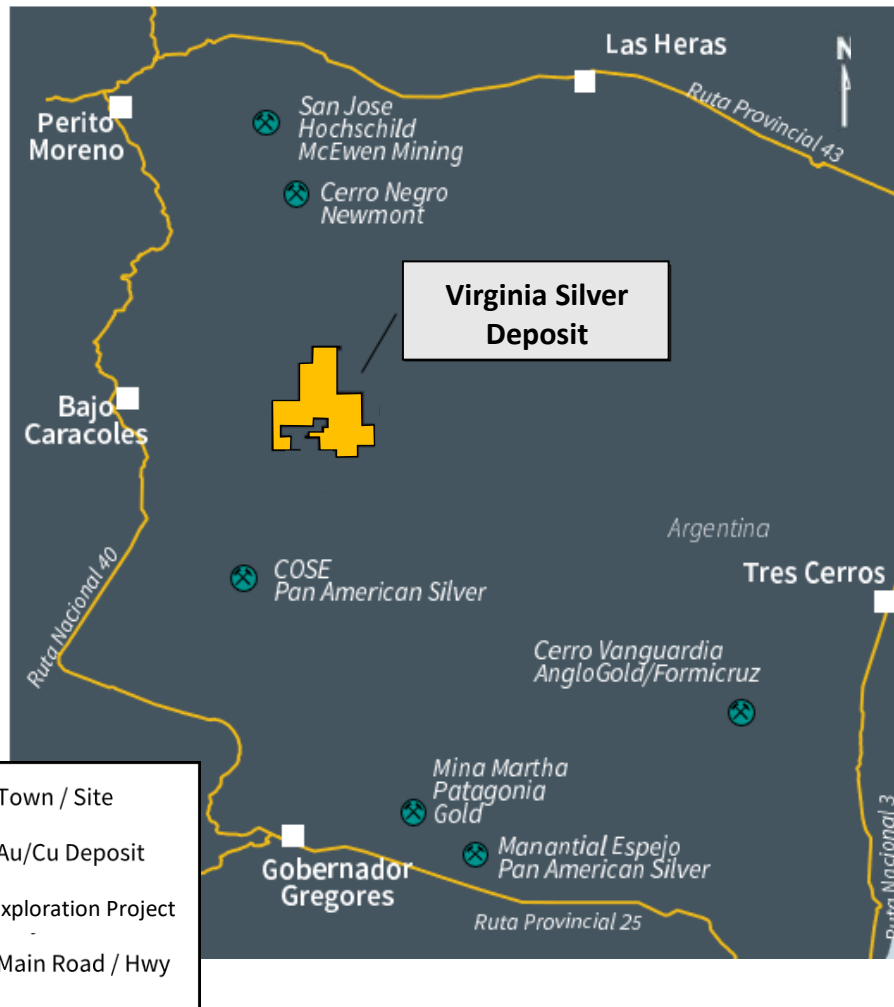
Chief Financial Officer

- Chartered Professional Accountant
- Broad operational and accounting background with more than 30 years of experience

Market Cap Growth – Impact of a Discovery



Highlight Project - Virginia - Silver, Argentina



Project Overview

- Santa Cruz, Argentina
- 74,429 ha
- Low to Intermediate sulfidation epithermal (LSE/ISE) silver vein deposit
- 70 km south (SSE) of Newmont's Cerro Negro Mine

Exploration Activities

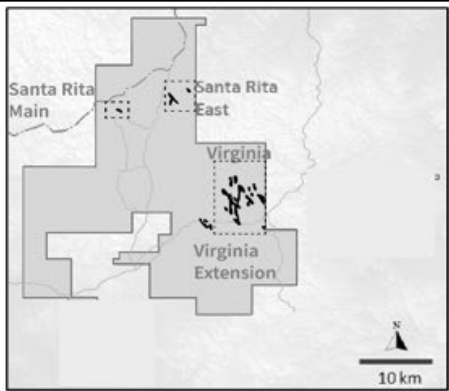
- ~10,000 m of drilling completed during the option, 3.5M US\$
- Phase I, II, III and IV drill program results confirmed strong potential for resource expansion

Resource Estimate

- New Updated NI 43-101 within conceptual pit resource ^[1]
 - *Indicated:* 11.7 Million oz contained within 1.016 Mt at 357 g/t Ag
 - *Inferred:* 7.9 Million oz contained within 1.326 Mt at 184 g/t Ag

[1] The Qualified Persons responsible for this amended Technical Report were commissioned by Mirasol Resources Ltd. to review all geologic, geochemical, geophysical, surface trenching, diamond drill core sampling and metallurgical recovery data pertaining to the Virginia Project for the purpose of completing a Mineral Resource estimate in accordance with the guidelines of the Canadian Institute of Mining and Metallurgy (CIMM). For calculating conceptual pits, a silver price of US\$25 per ounce was used. Sensitivity analyses by the Qualified Persons indicate that the Mineral Resources are not particularly sensitive to operating costs or silver price fluctuations. Mineral Resources which are not Mineral Reserves do not have demonstrated economic viability. Refer to Amended NI 43-101 technical report filed November 9, 2023

Virginia Deposit Update - Conceptual 2023 Resource Pits



LEGEND

• All Mirasol Drill Holes (2010-2022)

Mineralized Veins with high Ag anomalous rockchips outside the new resource (+2000 ppm)

High Ag intersections at previous drillholes outside the resource (needs further drillings)

Mineralized Structures

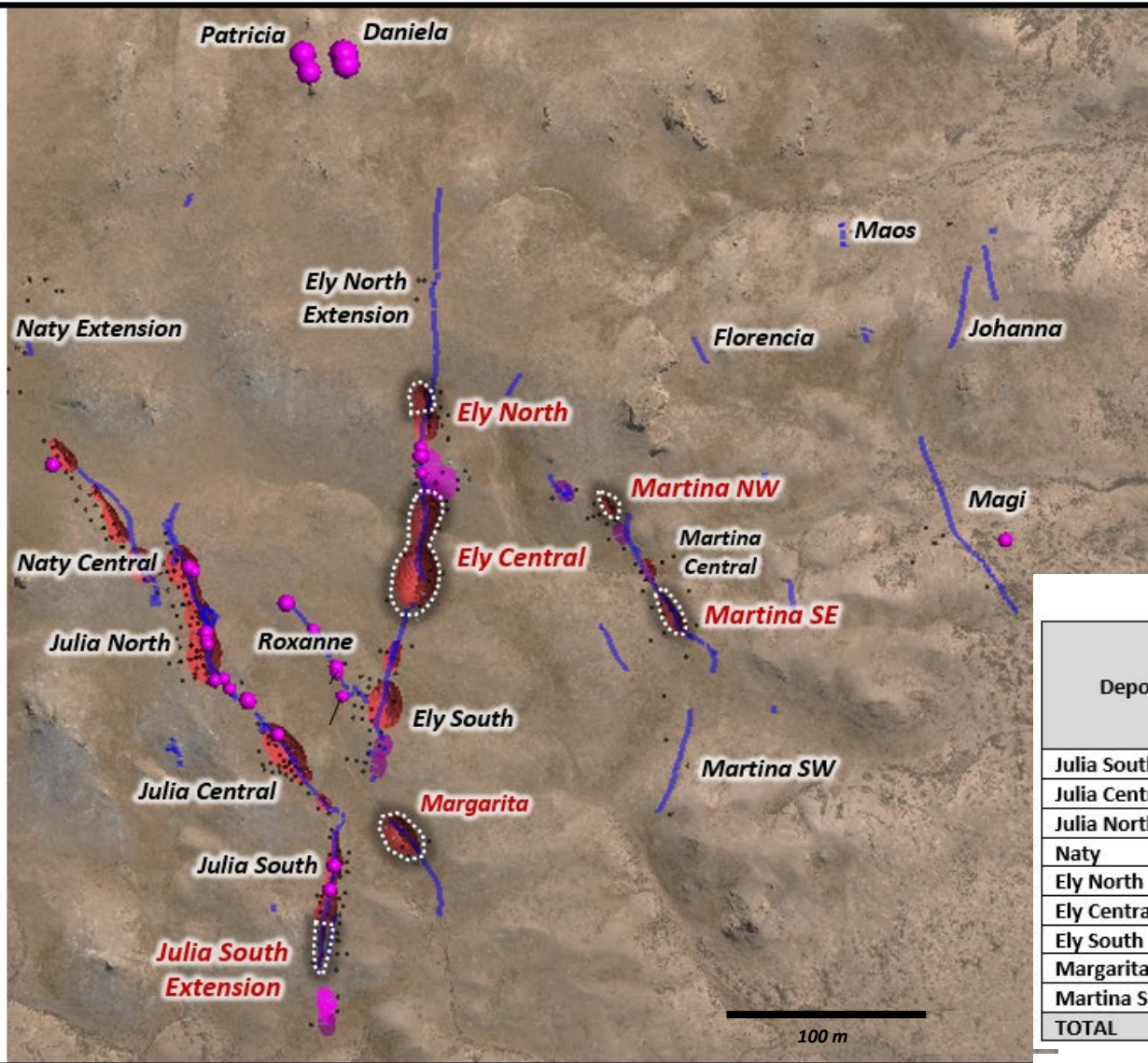
- Vein Shoots
- Continuous Vein Outcrop
- Discontinuous Vein Outcrop / Subcrop

Conceptual Resource Pits at US\$25 Ag (65 g/t Ag Cutoff)

Recent additional Conceptual Resource Pits

Labelled Rock Chip Samples

g/t Silver

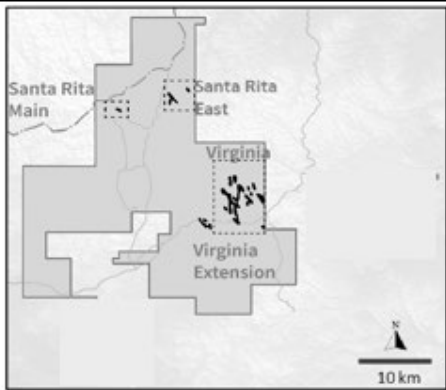


Mineral Resource Estimate Increased 30% to 20M oz Silver

Deposit	Indicated			Inferred		
	Vein/Breccia			Vein/Breccia		
	Tonnes (000)	Silver (g/t)	Silver Oz (000)	Tonnes (000)	Silver (g/t)	Silver Oz (000)
Julia South	93	420	1,250	29	162	153
Julia Central	247	278	2,207	105	158	532
Julia North	432	478	6,644	4	286	38
Naty	31	165	166	219	166	1,169
Ely North	73	132	310	254	105	861
Ely Central	57	302	558	336	253	2,975
Ely South	70	201	451	171	152	833
Margarita	---	---	---	84	318	861
Martina SE	12	188	72	94	143	431
TOTAL	1,016	357	11,659	1,326	184	7,853

11,659,000oz
7,853,000oz

Highlight Project - Virginia Deposit – Exploration Upside



LEGEND

• All Mirasol Drill Holes (2010-2022)

Mineralized Veins with high Ag anomalous rockchips outside the new resource (>2000 ppm)

High Ag intersections at previous drillholes outside the resource (needs further drillings)

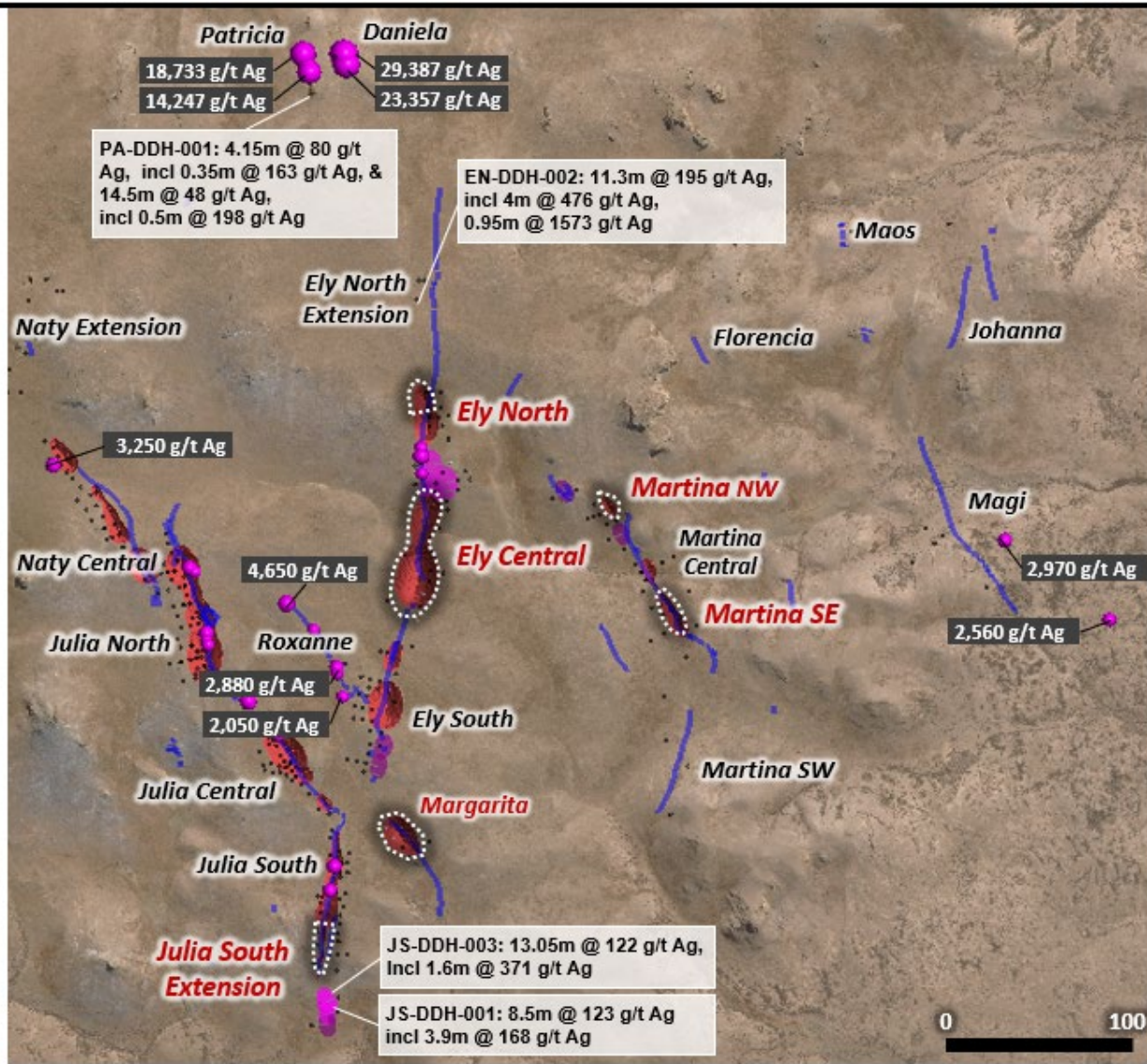
Mineralized Structures

- Vein Shoots
- Continuous Vein Outcrop
- Discontinuous Vein Outcrop / Subcrop

Conceptual Resource Pits at US\$25 Ag (65 g/t Ag Cutoff)

Recent additional Conceptual Resource Pits

Labelled Rock Chip Samples
 g/t Silver

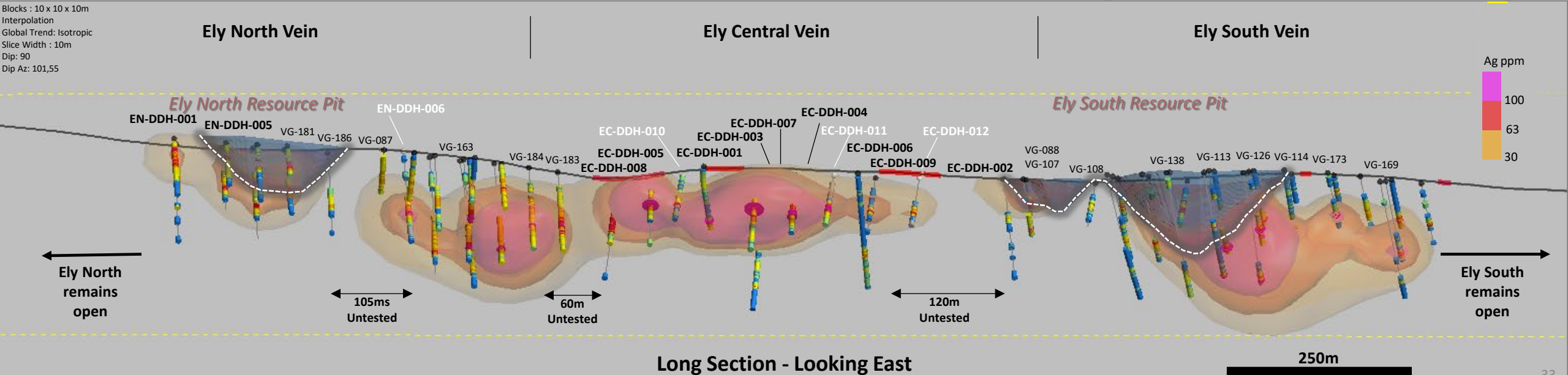
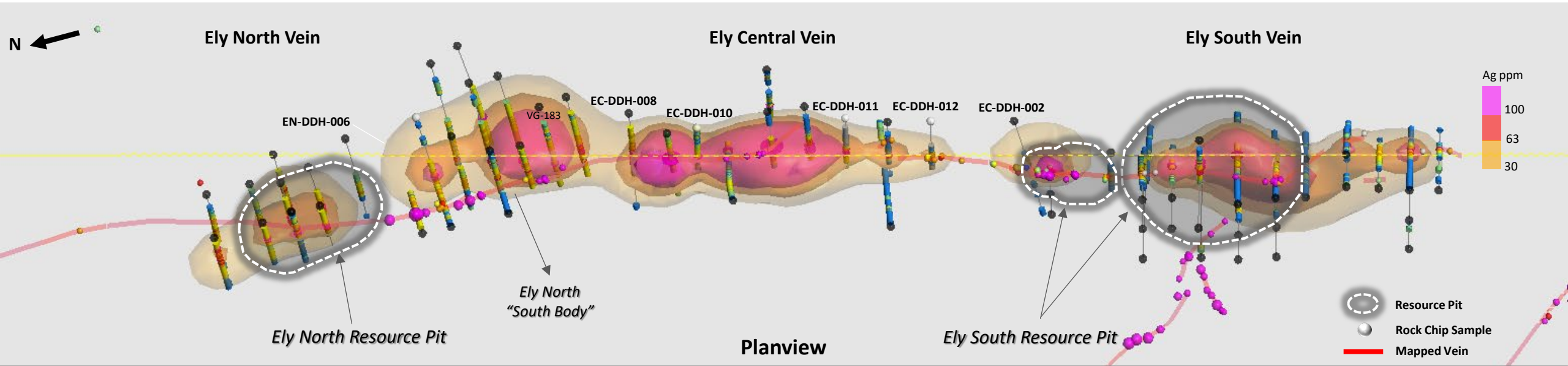


High-grade Silver in Nearby Prospects and Vein Structures Remain to be Tested

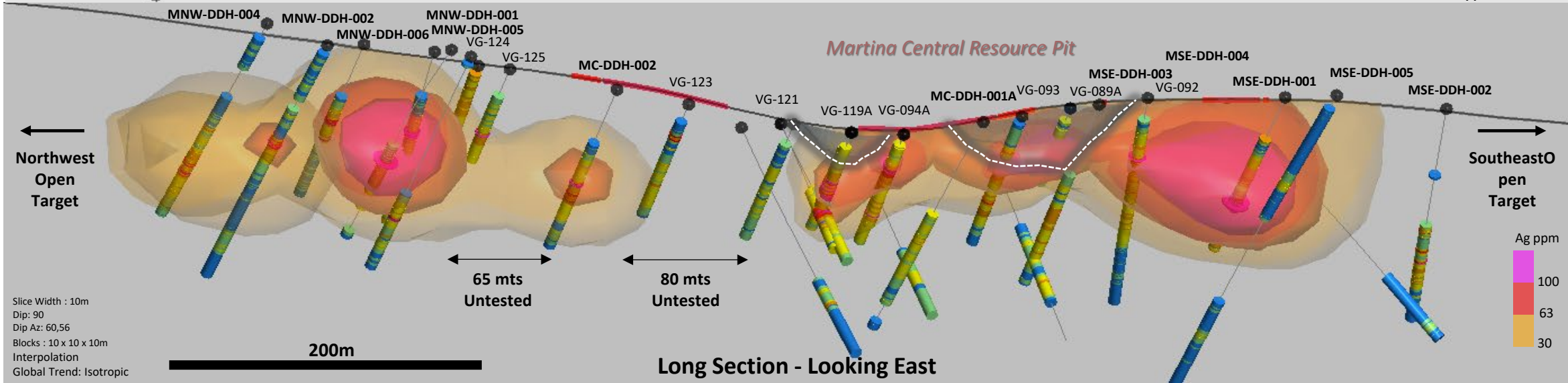
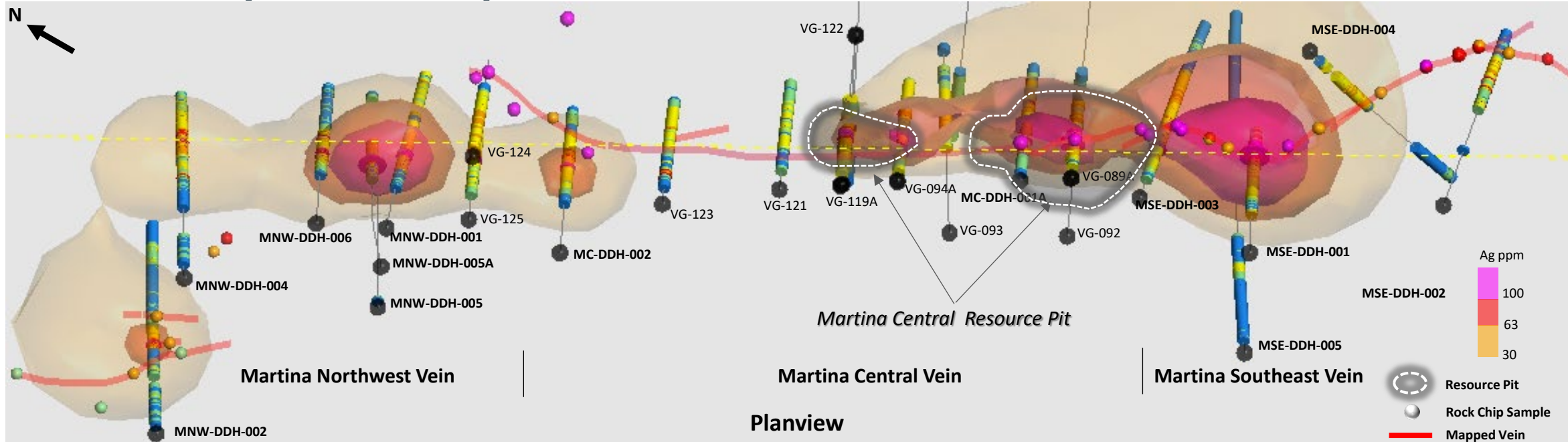
Highlights from Virginia Main

- Confirmed the potential for new well-mineralized structures to expand outside of the current NI 43-101 resource area
- Encountered significant intercepts at the gaps and extensions of the principal veins (**Ely Central, Ely North, Martina NW, Julia South**)
- Discovery of new high-grade mineralization at the **Margarita**

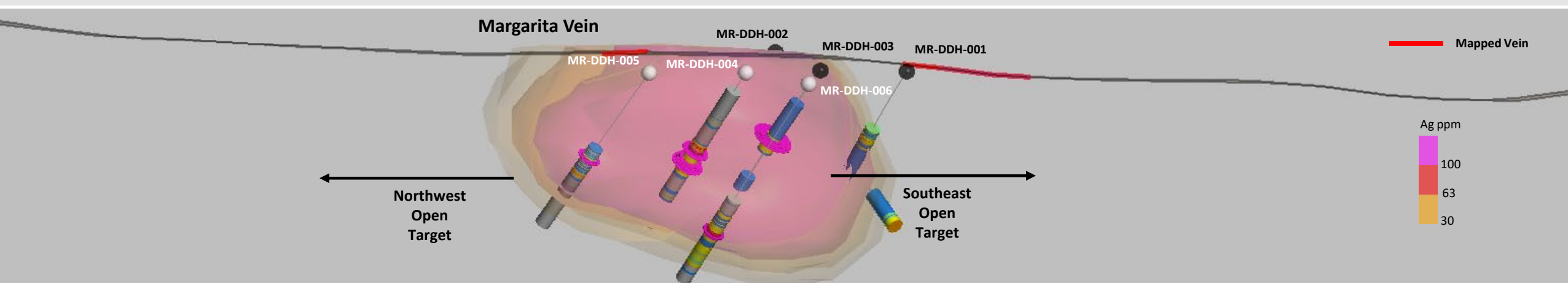
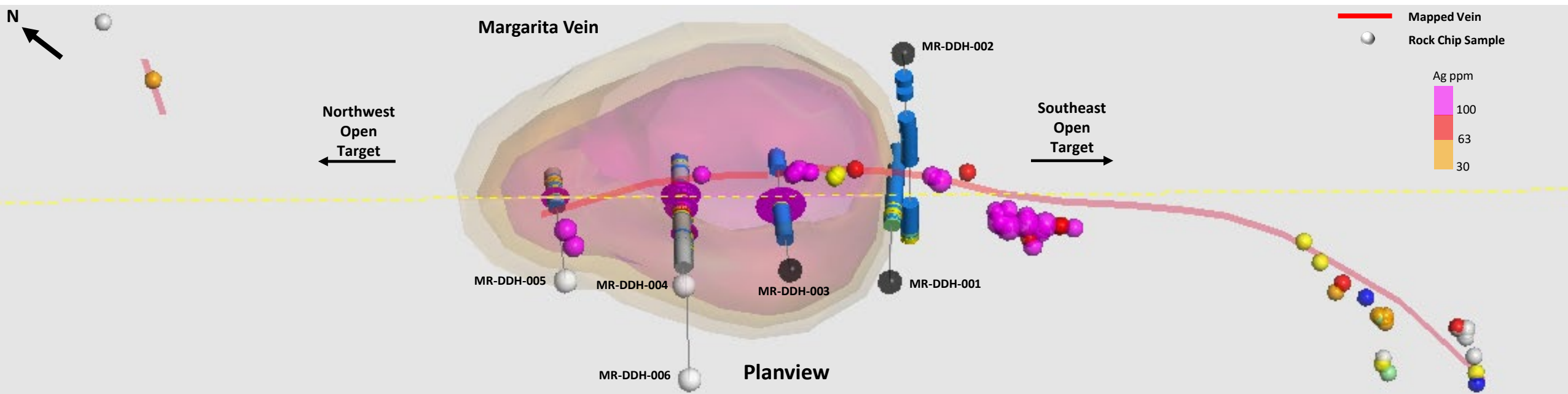
Ely North and Ely Central Vein Trends Long Section with Interpreted Composite Grade Shells (Ag cut-off grade 63 g/t)



Martina Vein Trend Long Section with Interpreted Composite Grade Shells (Ag cut-off grade 63 g/t)



Margarita Vein Trend Long Section with Interpreted Composite Grade Shells (Ag cut-off grade 63 g/t)



Slice Width : 10m
 Dip: 90
 Dip Az: 51,5
 Blocks : 10 x 10 x 10m
 Interpolation
 Global Trend: Isotropic

100m

Virginia Metallurgical Results - Vein Breccia and Halo

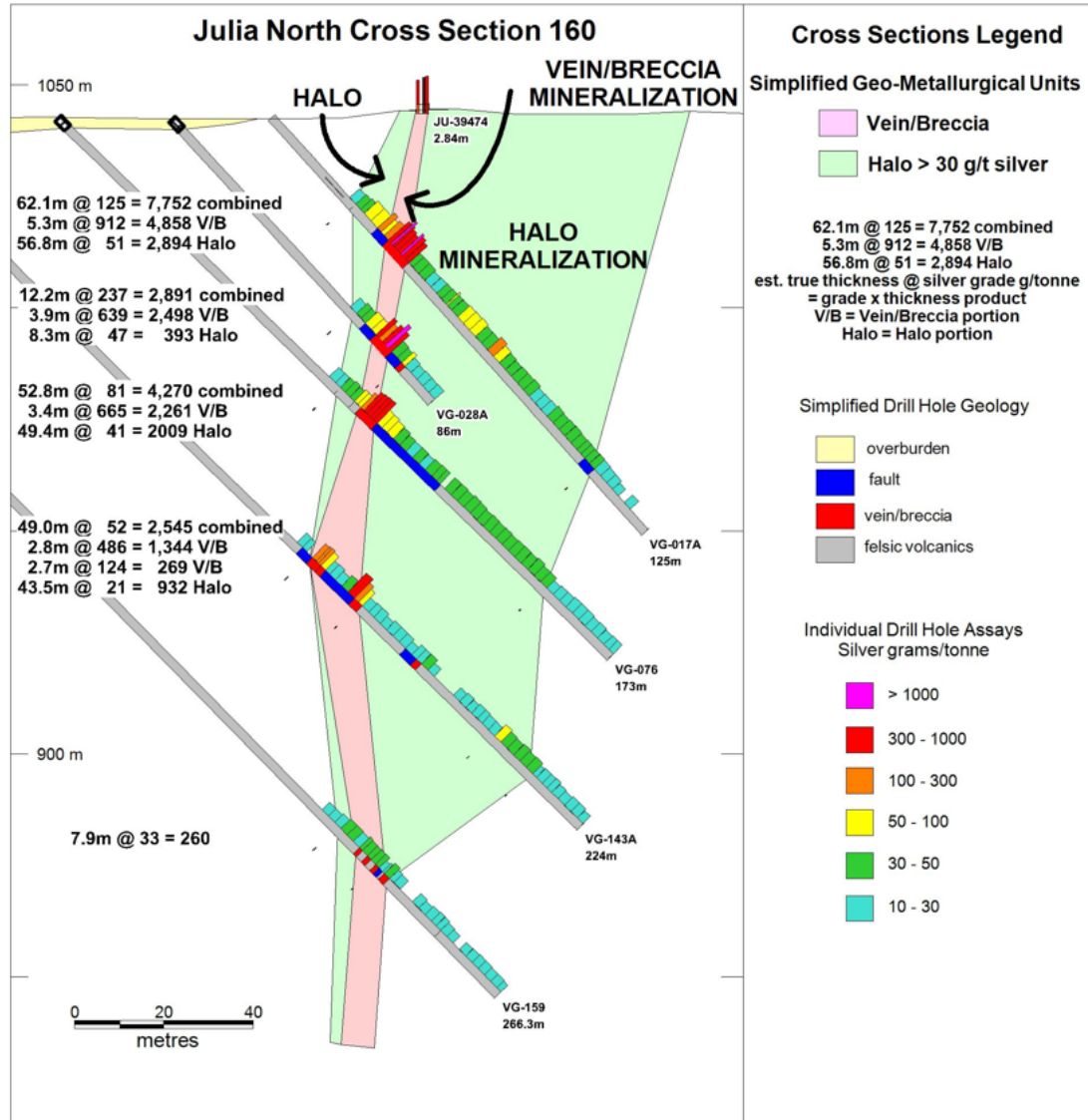


Table 13-1. Vein-Breccia Leaching Tests - Representative Summary

Head Grades Silver g/tonne	Grain size passing 80 µm	Concentration NaCN g/L	Reagent Consumption (kg/t of cyanide feed)		Silver Recovery %
			NaCN	CaO	
230 - 614	45 - 50	3 - 5	1.5 - 2.2	0.2 - 0.6	75 - 80

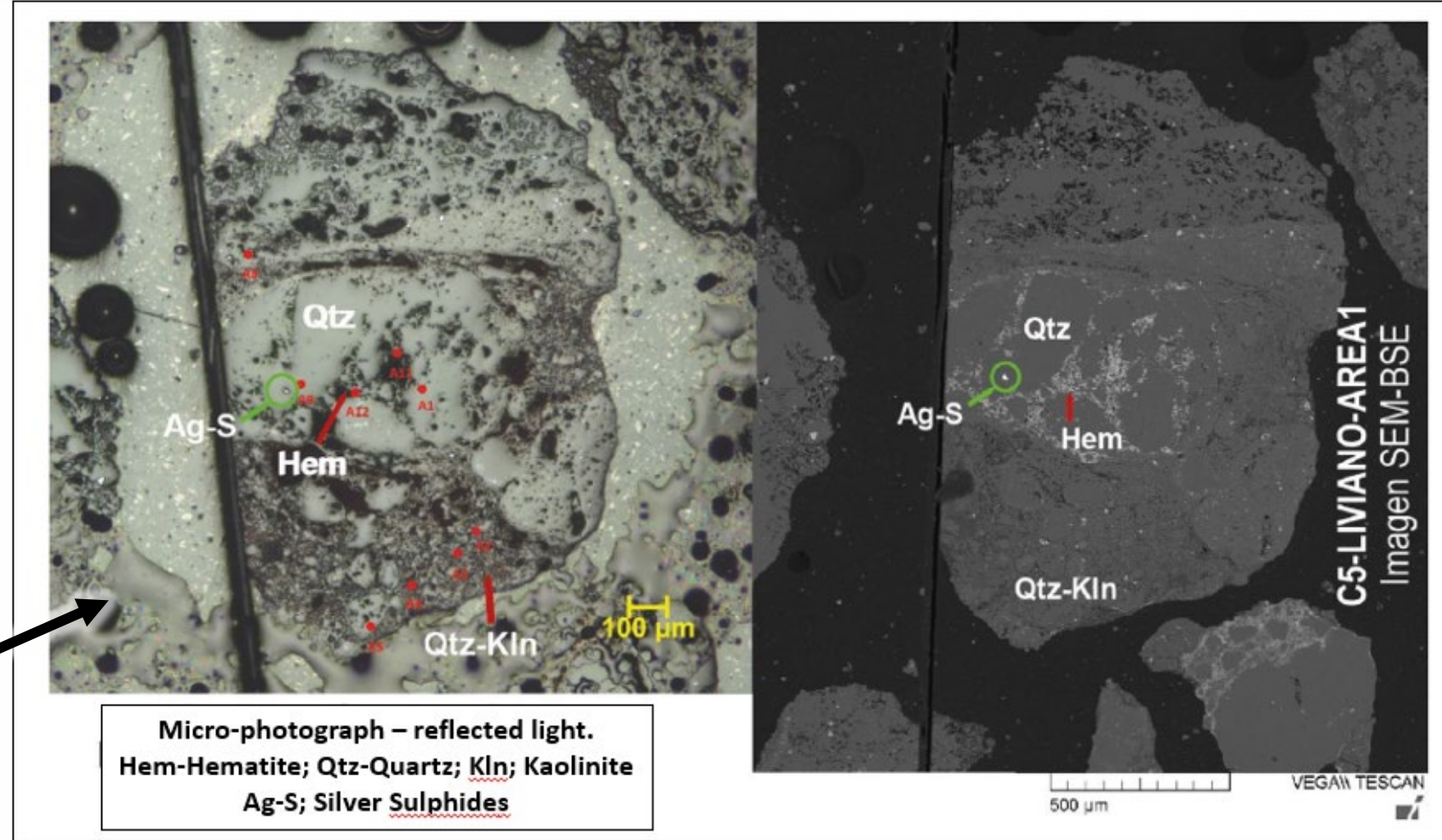
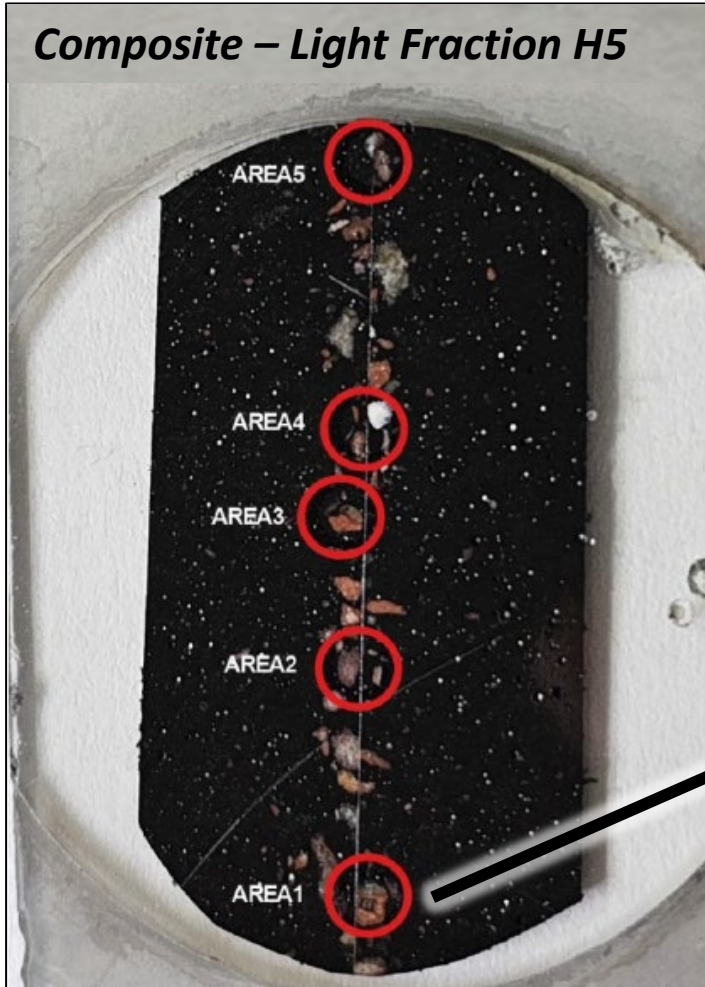
Table 4.4 - Summary of Results and Conditions for Halo Cyanidation Tests

Test #	Feed	p80 µm	NaCN Conc g/L	Leach Time: Hours	Reagent Consumption NaCN	CaO	Residue Assay Ag g/t	Head Assay Ag g/t Calculated	Silver Recovery %
CN15	500g Halo CAR	45	3	48	2.2	0.2	46.8	56.6	17.4
CN16	500g Halo CAR	45	5	48	2.3	0.0	45.7	54.9	16.8
CN26	500g Halo DC	40	3	48	2.0	1.0	42.2	51.3	17.7
CN27	500g Halo DC	27	3	48	1.6	1.3	43.6	55.3	21.2
CN28	500g Halo DC	>25	3	48	4.0	0.7	43.8	54.4	19.3
CN29	500g Halo DC	1027	3	168	1.9	2.0	47.6	50.3	5.3

The original metallurgical results for the halo less than 21.2%

Current metallurgical studies focused on improving the halo Ag recovery using highly advanced metallurgical applications.

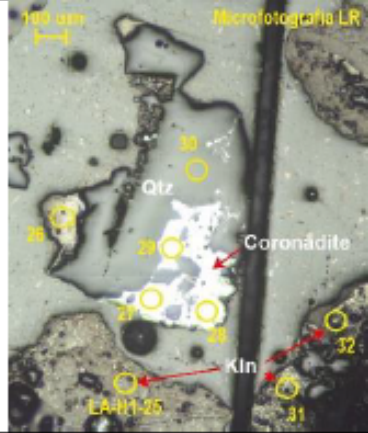
Virginia Mineralized Halo - Metallurgical Studies



The vein/breccia mineralization has good Ag recovery from conventional methods. The halo mineralization is more complex, with sub-economic silver recoveries. Mirasol is currently doing innovative metallurgical testing to find a single metallurgical solution to recover the silver from both the vein/breccia and the halo in one single economically viable unified process.

Virginia Mineralized Halo - Silica Encapsulated Ag

Muestra compuesto H1

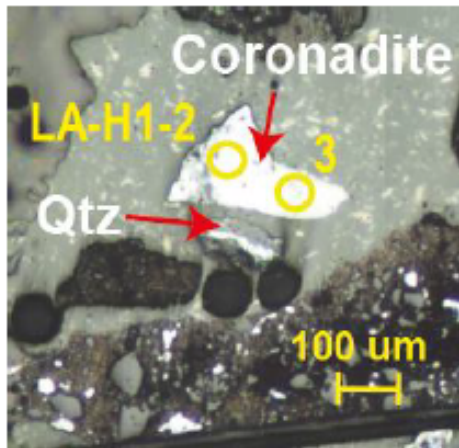
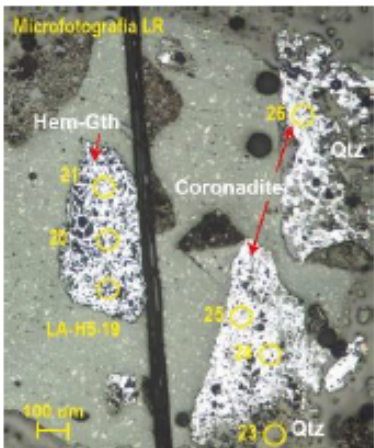


Pto. de ablación	mineral	Ag "in-situ" (ppm)
LA-H1-25	Caolinita	<LoD
LA-H1-26	Coronadita	106
LA-H1-27	Coronadita	111
LA-H1-28	Coronadita	78
LA-H1-29	Coronadita	105
LA-H1-30	Cuarzo	692
LA-H1-31	Caolinita	<LoD
LA-H1-32	Caolinita	<LoD

Good Ag Recovery

Non-recoverable to date

Muestra compuesto H5



Pto. de ablación	mineral	Ag "in-situ" (ppm)
LA-H5-19	Hematita	<LoD
LA-H5-20	Hematita	<LoD
LA-H5-21	Hematita	<LoD
LA-H5-22	Sílice coloidal	<LoD
LA-H5-23	Cuarzo	1259
LA-H5-24	Coronadita	33
LA-H5-25	Coronadita	42
LA-H5-26	Coronadita	38
LA-H1-2	Coronadita	56
LA-H1-3	Coronadita	37

Metallurgical studies will focus on trying to improve this invisible Ag recovery.

Non-recoverable to date

Good Ag Recovery

Caolinita = Kaolinite, Coronadita = Cornodite, Cuarzo = Quartz, Sílice Coloidal = Colloidal Silica



Sobek Project, Chile

TSX.V: **MRZ**
OTC: **MRZLF**

For Further Information:

Tim Heenan, President
Troy Shultz, VP Investor Relations

Tel: (604) 602 9989

Email: troy.shultz@mirasolresources.com

Website: mirasolresources.com

