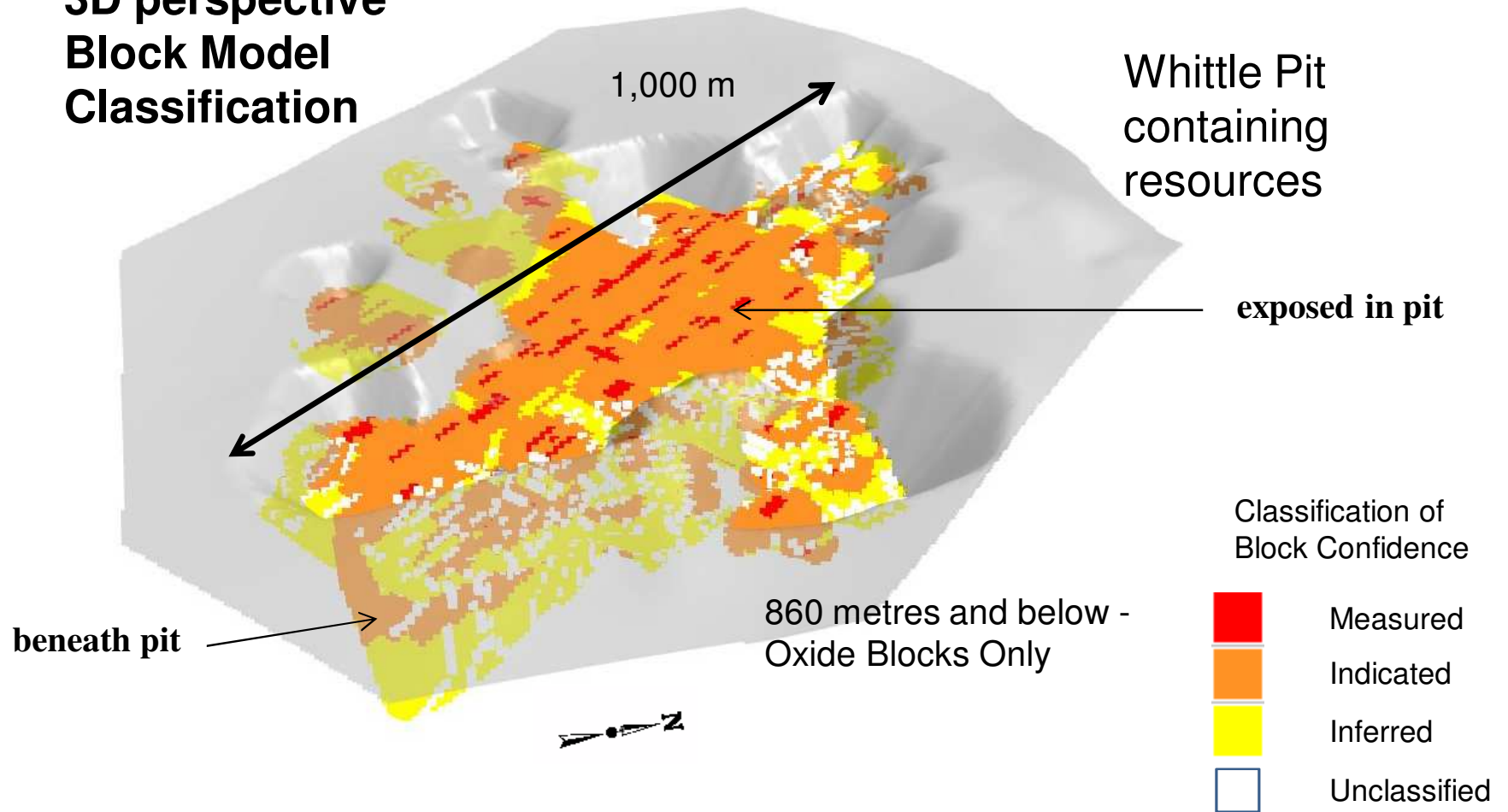
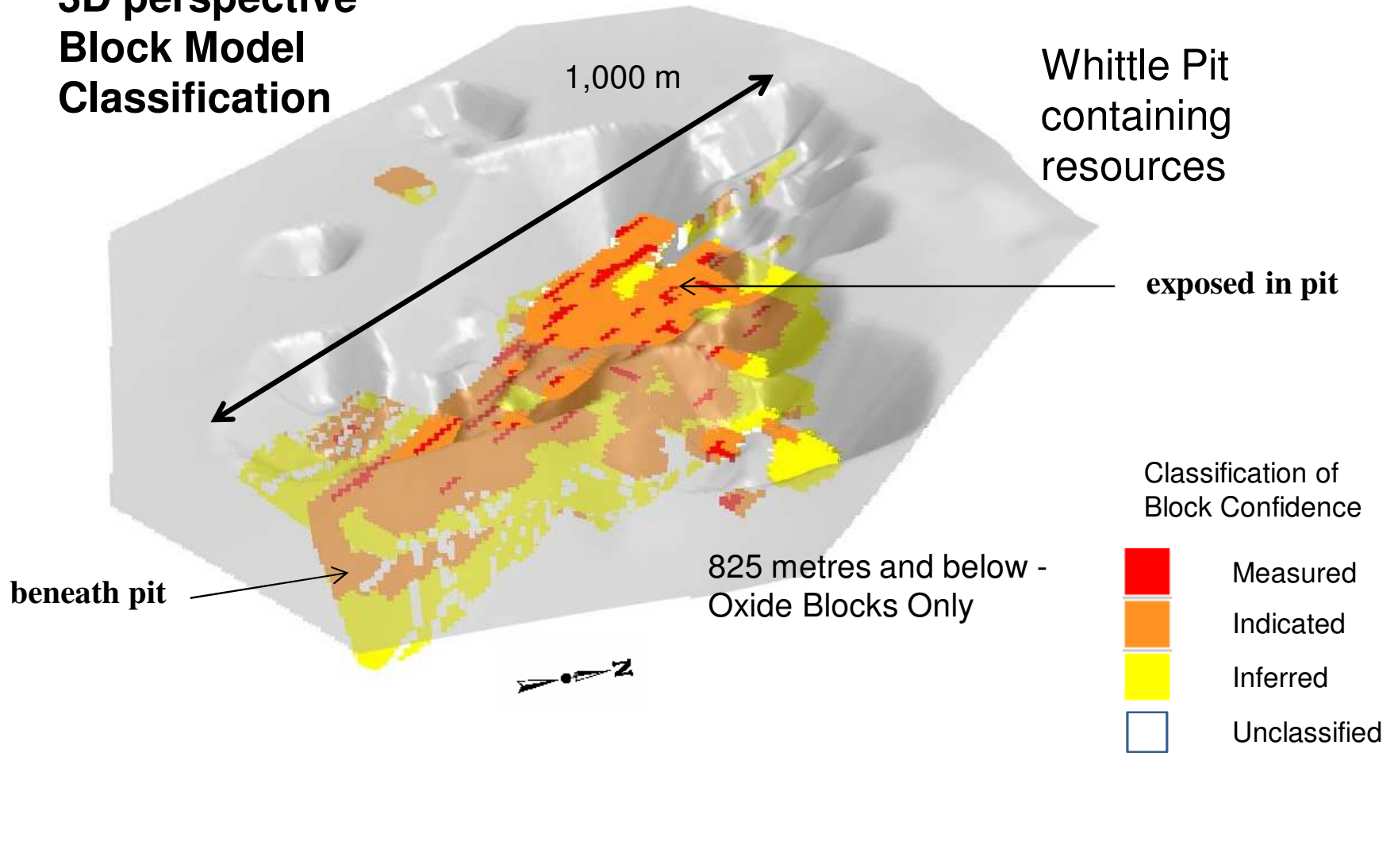


**La Negra Resource  
3D perspective  
Block Model  
Classification**



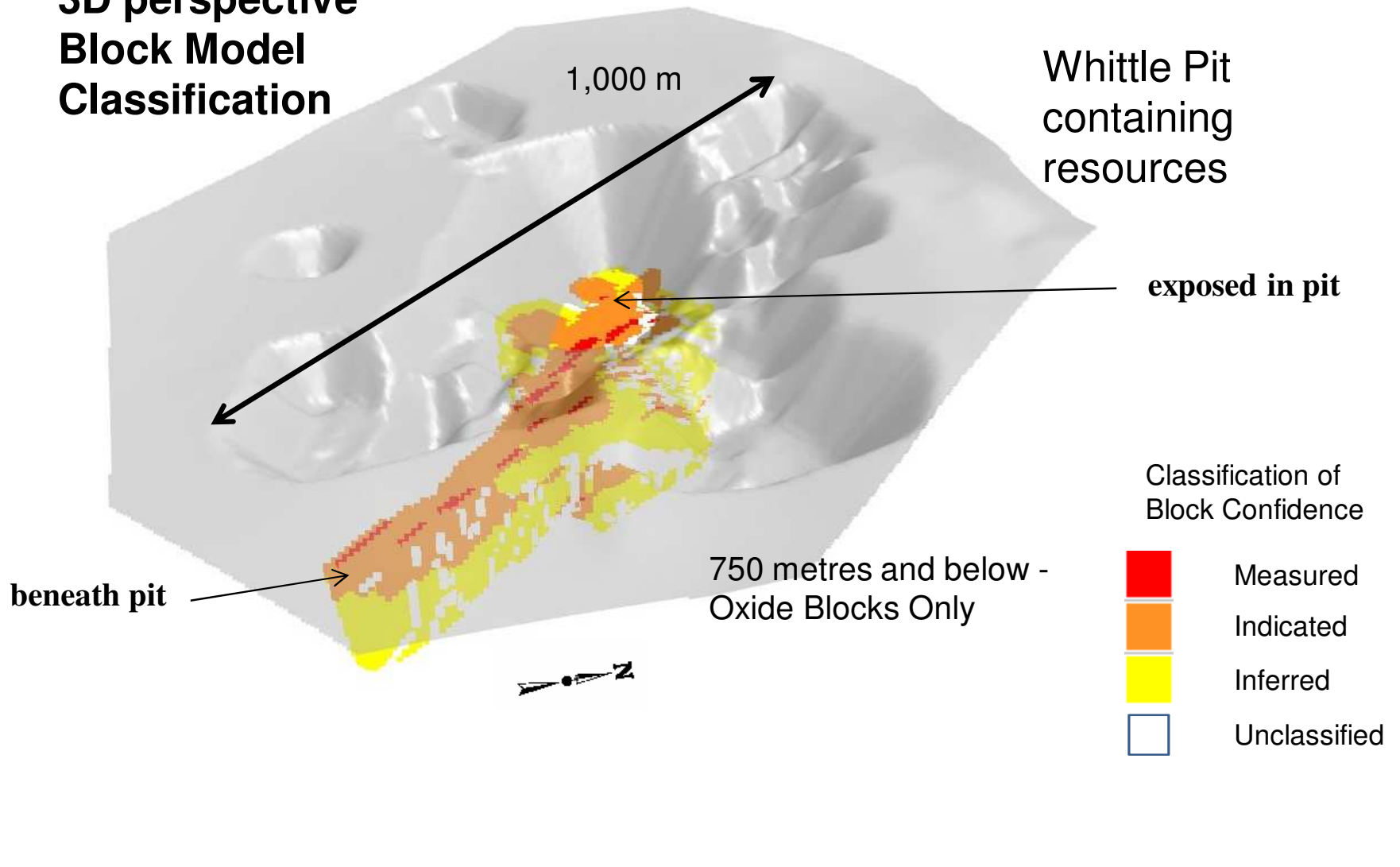
Mirasol Resources. 3D perspective view of the La Negra silver deposit with the Whittle® pit resource outlines announced Aug. 7, 2012 showing classification of the block model below 860m. Sept. 2012.

**La Negra Resource  
3D perspective  
Block Model  
Classification**



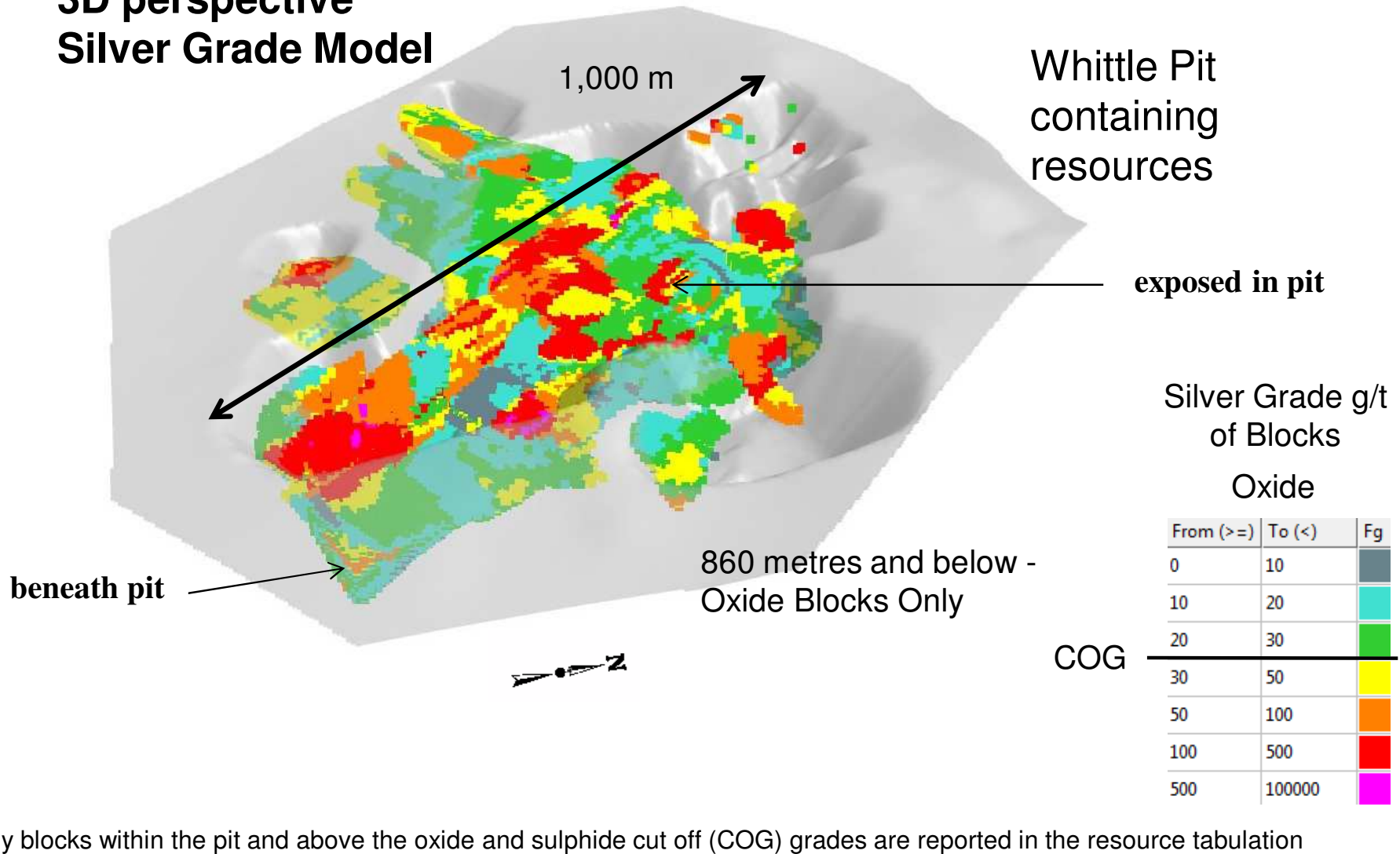
Mirasol Resources. 3D perspective view of the La Negra silver deposit with the Whittle® pit resource outlines announced Aug. 7, 2012 showing classification of the block model below 825m. Sept. 2012.

**La Negra Resource  
3D perspective  
Block Model  
Classification**



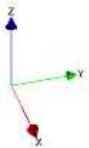
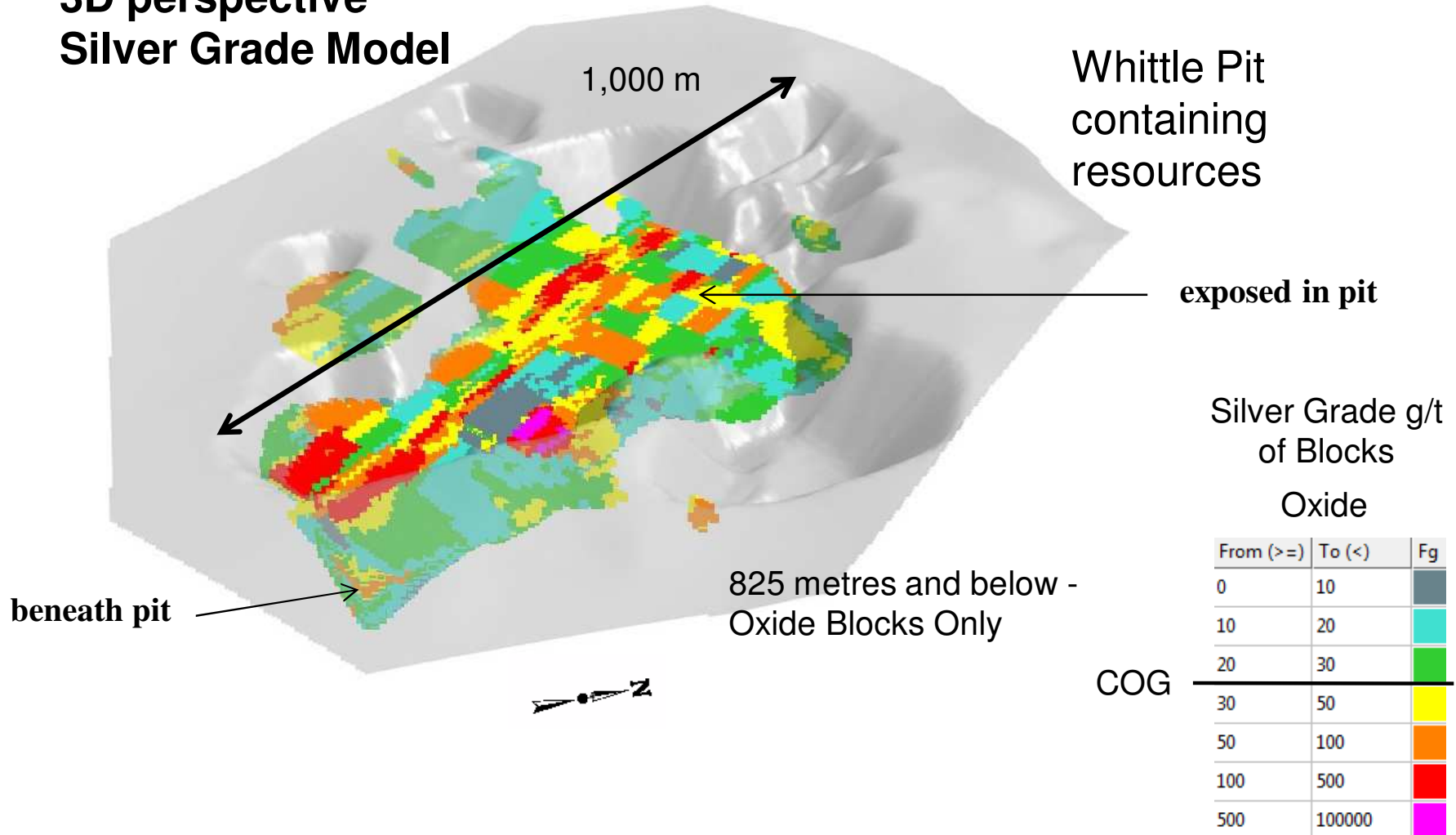
Mirasol Resources. 3D perspective view of the La Negra silver deposit with the Whittle® pit resource outlines announced Aug. 7, 2012 showing classification of the block model below 750m. Sept. 2012.

# La Negra Resource 3D perspective Silver Grade Model



Mirasol Resources. 3D perspective view of the La Negra silver deposit with the Whittle® pit resource outlines announced Aug. 7, 2012 showing silver grades of the block model below 860m. Sept. 2012.

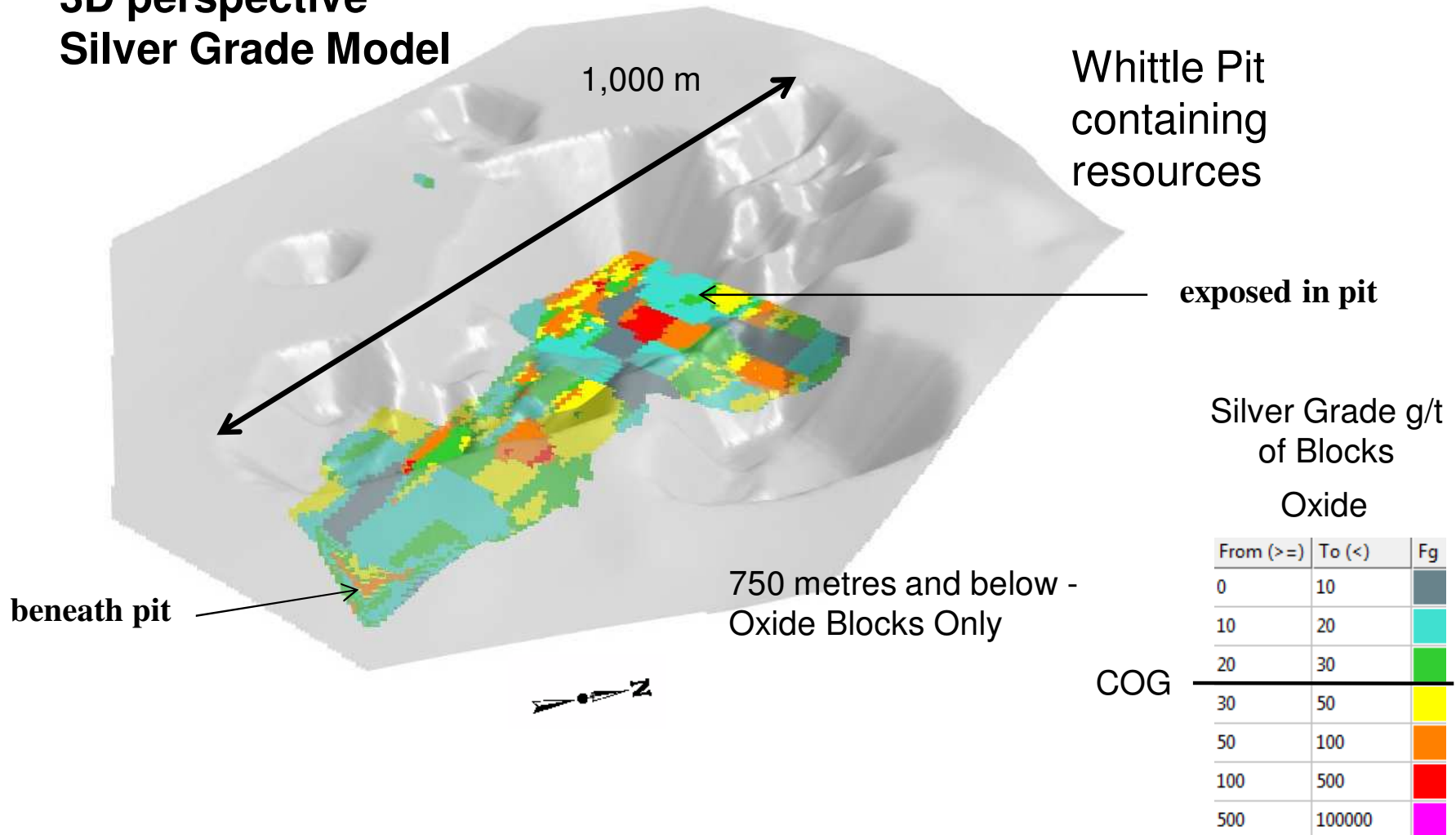
# La Negra Resource 3D perspective Silver Grade Model



Note - only blocks within the pit and above the oxide and sulphide cut off (COG) grades are reported in the resource tabulation

Mirasol Resources. 3D perspective view of the La Negra silver deposit with the Whittle® pit resource outlines announced Aug. 7, 2012 showing silver grades of the block model below 825m. Sept. 2012.

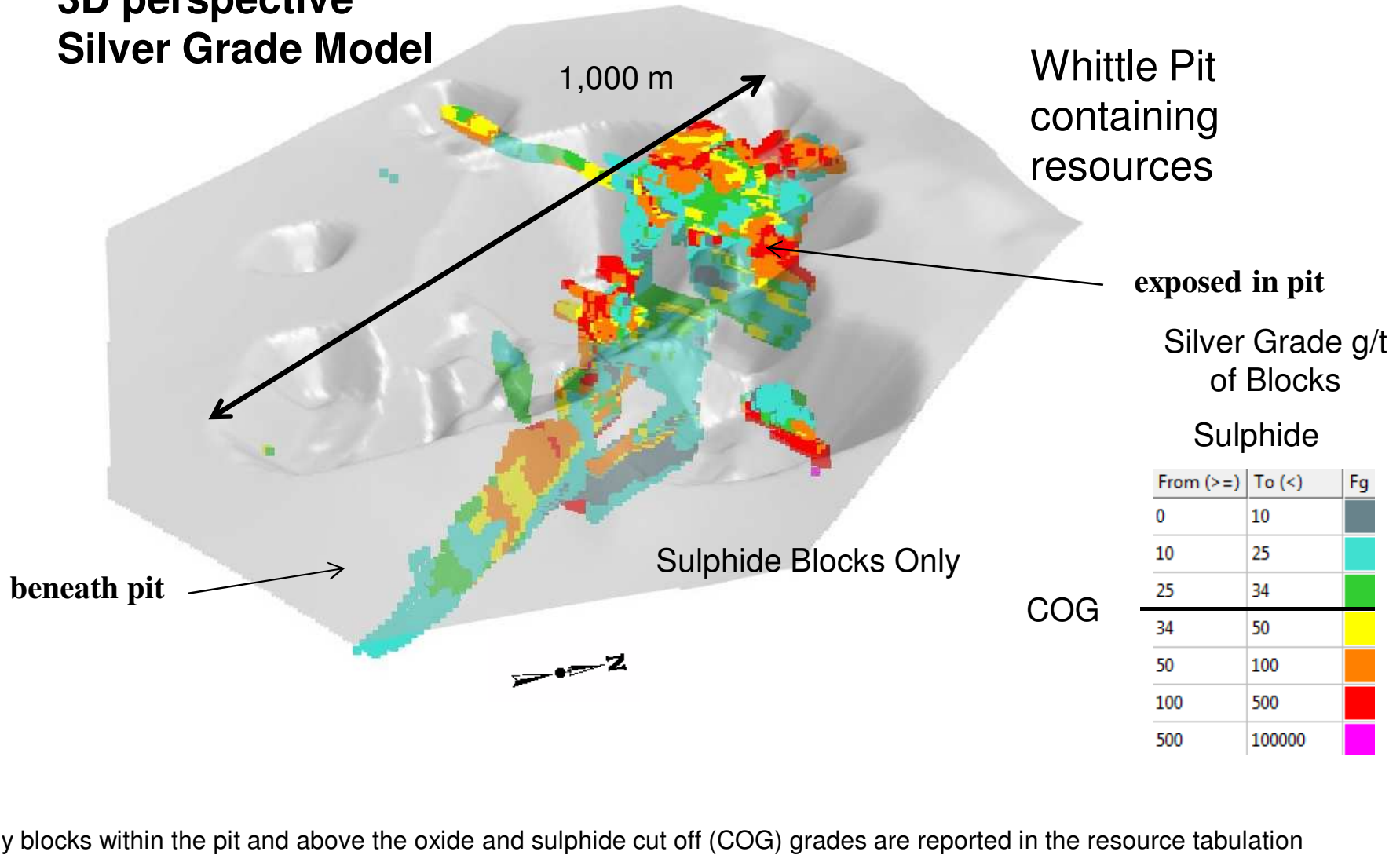
# La Negra Resource 3D perspective Silver Grade Model



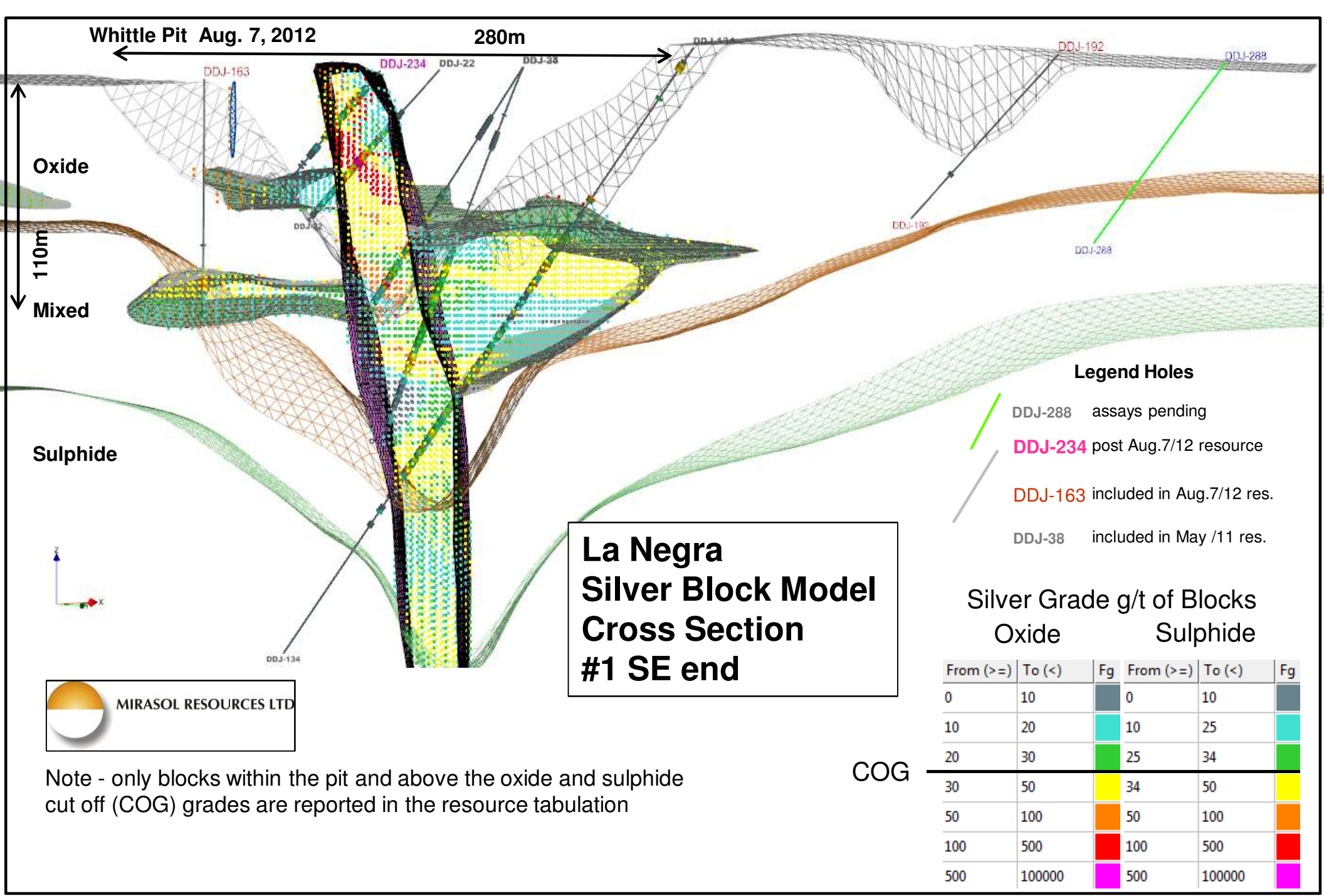
Note - only blocks within the pit and above the oxide and sulphide cut off (COG) grades are reported in the resource tabulation

Mirasol Resources. 3D perspective view of the La Negra silver deposit with the Whittle® pit resource outlines announced Aug. 7, 2012 showing silver grades of the block model below 750m. Sept. 2012.

**La Negra Resource  
3D perspective  
Silver Grade Model**



**Mirasol Resources. 3D perspective view of the La Negra silver deposit with the Whittle® pit resource outlines announced Aug. 7, 2012 showing silver grades of the block model. Sept. 2012.**

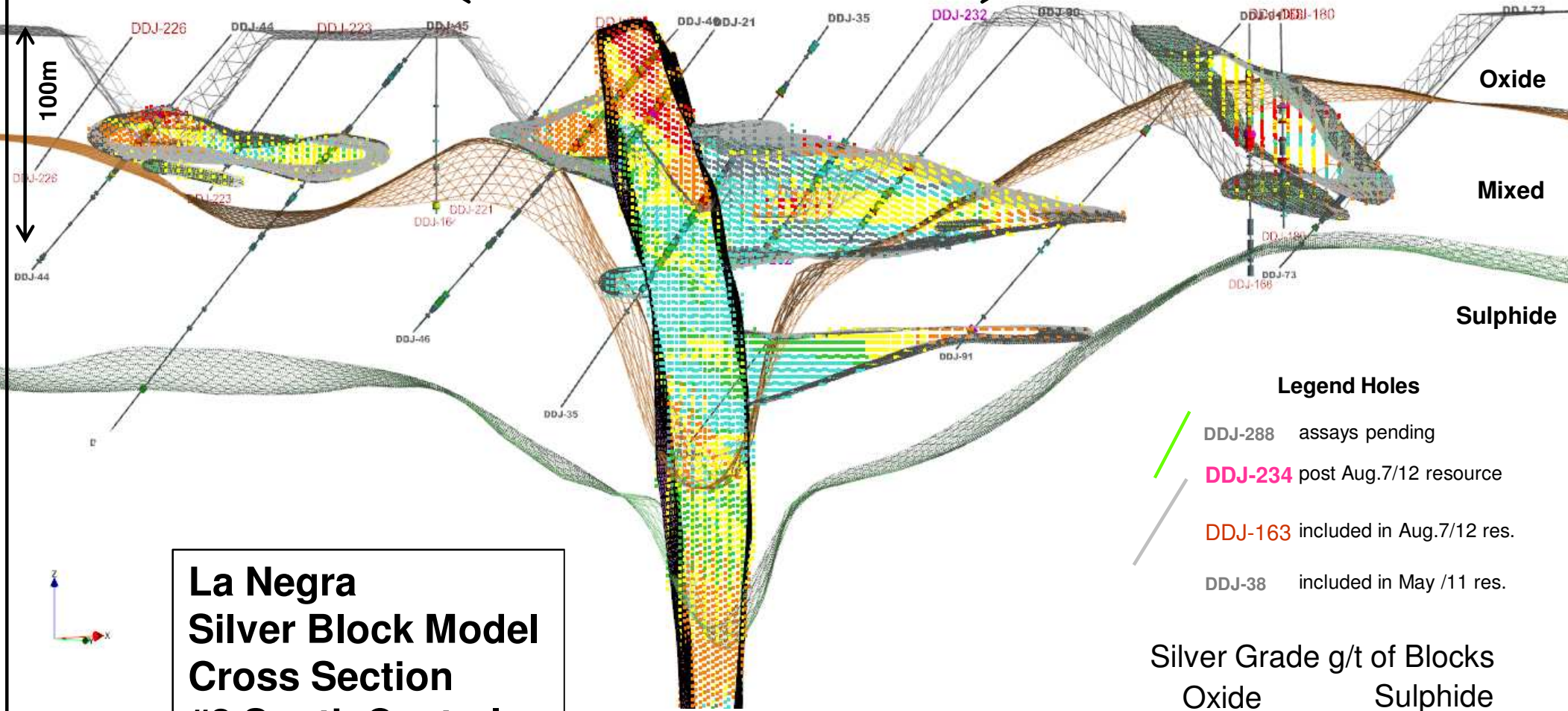


**Mirasol Resources. Cross section view #1 of the La Negra silver deposit with the Whittle® pit resource outlines announced Aug. 7, 2012 showing silver grades of the block model. Sept. 2012.**



Whittle Pit Aug. 7, 2012

250m



**La Negra  
Silver Block Model  
Cross Section  
#2 South Central**



Note - only blocks within the pit and above the oxide and sulphide cut off (COG) grades are reported in the resource tabulation

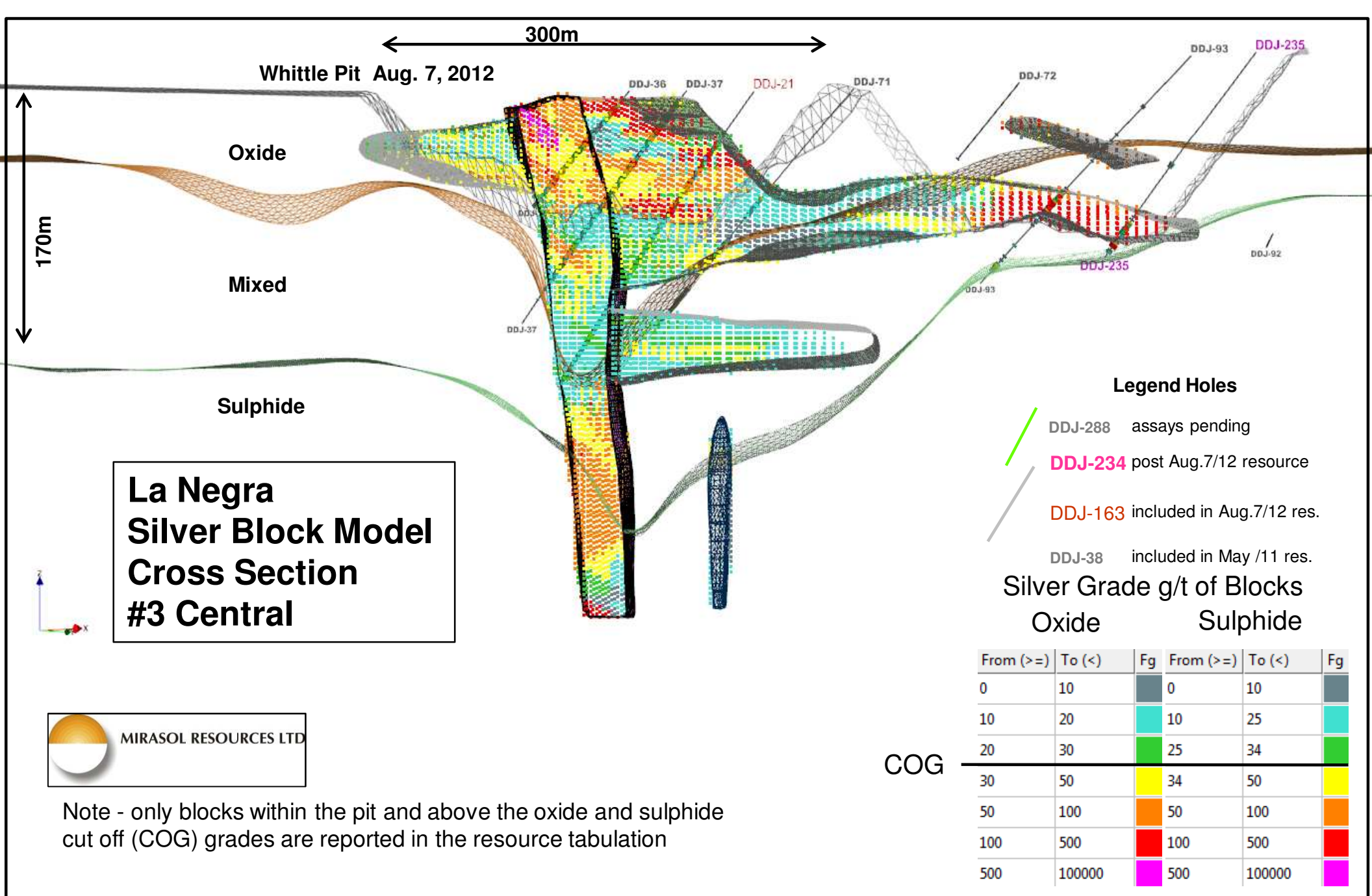
- Legend Holes**
- DDJ-288 assays pending
  - DDJ-234 post Aug.7/12 resource
  - DDJ-163 included in Aug.7/12 res.
  - DDJ-38 included in May /11 res.

Silver Grade g/t of Blocks  
Oxide Sulphide

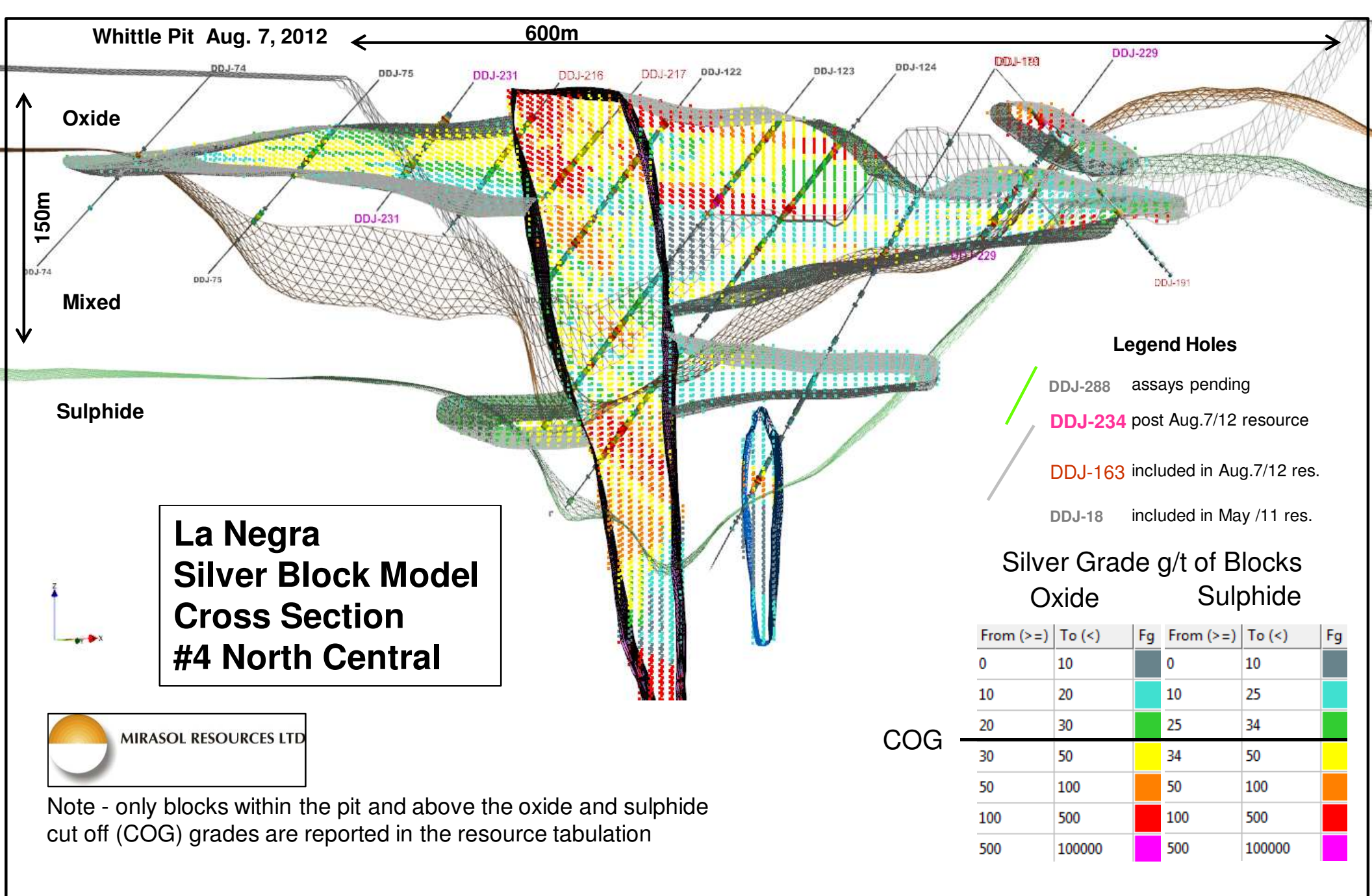
COG

From (>=)	To (<)	Fg	From (>=)	To (<)	Fg
0	10	Dark Grey	0	10	Dark Grey
10	20	Cyan	10	25	Cyan
20	30	Green	25	34	Green
30	50	Yellow	34	50	Yellow
50	100	Orange	50	100	Orange
100	500	Red	100	500	Red
500	100000	Magenta	500	100000	Magenta

Mirasol Resources. Cross section view #2 of the La Negra silver deposit with the Whittle® pit resource outlines announced Aug. 7, 2012 showing silver grades of the block model. Sept. 2012.



Mirasol Resources. Cross section view #3 of the La Negra silver deposit with the Whittle® pit resource outlines announced Aug. 7, 2012 showing silver grades of the block model. Sept. 2012.



Whittle Pit Aug. 7, 2012

600m

Oxide

Mixed

Sulphide

**La Negra  
Silver Block Model  
Cross Section  
#4 North Central**



Note - only blocks within the pit and above the oxide and sulphide cut off (COG) grades are reported in the resource tabulation

**Legend Holes**

- DDJ-288 assays pending
- DDJ-234 post Aug.7/12 resource
- DDJ-163 included in Aug.7/12 res.
- DDJ-18 included in May /11 res.

**Silver Grade g/t of Blocks  
Oxide Sulphide**

COG

From (>=)	To (<)	Fg	From (>=)	To (<)	Fg
0	10		0	10	
10	20		10	25	
20	30		25	34	
30	50		34	50	
50	100		50	100	
100	500		100	500	
500	100000		500	100000	

Mirasol Resources. Cross section view #4 of the La Negra silver deposit with the Whittle® pit resource outlines announced Aug. 7, 2012 showing silver grades of the block model. Sept. 2012.

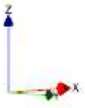
Whittle Pit Aug. 7, 2012

490m

190m

Oxide  
Mixed  
Sulphide

**La Negra  
Silver Block Model  
Cross Section  
#5 NW end**



Note - only blocks within the pit and above the oxide and sulphide cut off (COG) grades are reported in the resource tabulation

- Legend Holes**
- / DDJ-288 assays pending
  - / DDJ-234 post Aug.7/12 resource
  - / DDJ-163 included in Aug.7/12 res.
  - / DDJ-38 included in May /11 res.

Silver Grade g/t of Blocks  
Oxide Sulphide

COG

From (>=)	To (<)	Fg	From (>=)	To (<)	Fg
0	10		0	10	
10	20		10	25	
20	30		25	34	
30	50		34	50	
50	100		50	100	
100	500		100	500	
500	100000		500	100000	

Mirasol Resources. Cross section view #5 of the La Negra silver deposit with the Whittle® pit resource outlines announced Aug. 7, 2012 showing silver grades of the block model. Sept. 2012.