

## **Mirasol Resources Reports Best Results to Date from Yamana Gold Drilling at the Atlas Project, Gorbea JV, Mio – Pliocene Mineral Belt of Northern Chile**

***1.07 g/t Au over 114 m, including 2.49 g/t Au over 36 m down hole***

**VANCOUVER, BC – September 11, 2017 -- Mirasol Resources Ltd. (TSX-V: MRZ, OTCQK: MRZLF “Mirasol”, “The Company”)** is pleased to report results from the second season of drilling by Yamana Gold at the Atlas Project, Gorbea JV in the Mio-Pliocene Belt of Northern Chile.

Current drill results at Gorbea include the best down-hole intersection to date from the Atlas project, comprising 1.07 g/t Au intersected over 114 m, including 2.49 g/t Au over 36 m in oxidized high sulphidation epithermal (HSE) vuggy silica breccia. Drilling to-date at Atlas ([Figure 1](#)) has outlined Au mineralization (the “Steam Heated Zone”) in an area of 650 m by 125 m by over a 200 m vertical interval ([Figure 2](#)). The Steam Heated Zone may represent a body of Au+Ag mineralization that as defined to date is open to depth and laterally in all directions outside the area of current drilling. As currently known, the top of mineralization is located between approximately 255 to 310 m depth beneath altered cap rocks, which is a characteristic in-common with other recent, HSE gold discoveries elsewhere on this same mineral belt in Chile. Further drilling is required at Atlas to determine the size, continuity and grade of the Steam Heated Zone and to establish if extensions of this mineralization occur closer to surface, where it may be accessible via open pit mining.

Stephen Nano CEO of Mirasol stated “We are very encouraged by these results that demonstrate the presence of a large, strongly mineralized and deeply oxidized, HSE gold system at Atlas. Yamana has made significant advances in understanding the controls on gold mineralization at the project and are planning a large drill program this season to test for extensions of the Steam Heated Zone mineralization and to test a number of other compelling targets at Atlas and the other Gorbea JV projects.”

During the last drill season (October 2016 to April 2017), Yamana completed 2,558 m of diamond core drilling in seven holes ([Figure 1](#), and [Table 1](#) and [Table 2](#); holes CATRAD0014 to 20) at the Atlas project. Total drilling completed since inception of the Gorbea JV in May 2015 is over 8,704 m, and Yamana’s total exploration spend to May 2017 is approximately US\$5.2M, against the US\$10 M required to trigger the 51% earn-in milestone over a maximum of 4 years. In addition, on May 12, 2017 Yamana made a US\$400,000 option payment to Mirasol Resources to continue the JV into its third year (see news release May 30, 2017).

Yamana also recently advised Mirasol that it has increased its 2017 Gorbea JV exploration budget by an additional US\$700,000. The additional exploration funds will be directed to drilling at the Atlas Steam Heated Zone and other new targets at the project. Yamana is planning to re-commence drilling at Atlas for the southern hemisphere 2017 spring field season in October.

Last season’s (October 2016 to April 2017) drill campaign at Atlas was focused on a series of outcropping breccia bodies that were highlighted during a pre-drill geological mapping campaign.

Best results from this drill campaign were received from holes 15 and 16 ([Figure 2](#), [Table 1](#)) and include:

- 114.1 m at 1.07 g/t Au and 1.78 g/t Ag, including 36 m at 2.49 g/t Au and 3.08 g/t Ag (hole 15)
- 45.8 m at 0.32 g/t Au and 0.81 g/t Ag (hole 16)

The intersection in hole 15 starts from 347 m down hole. Hole 16 is interpreted to have drilled across the top of this same breccia body. Drill holes 15 and 16 were drilled toward each other (“scissor holes”) from the NW and SE to cross each other at depth, testing a zone beneath an area of coincident outcropping breccia, weakly anomalous soil geochemistry and a geophysical anomaly that lies midway between drill holes 7 and 10 from last season’s drilling. Holes 7 and 10 returned the best results from the 2015-16 drill campaign including 40 m at 1.38 g/t Au, with 28 m at 1.82 g/t Au. The mineralization at Atlas is interpreted to be oxidized to depths of more than 400 m downhole. Deep oxidation is considered a positive feature at Atlas as it may suggest the potential for favourable metallurgical characteristics of the mineralization at the project.

The geometric relationship of mineralization intersected in drill holes 7, 10, 15, and 16 ([Figure 2](#)) outlines a target zone with dimensions of 650 m by 125 m by over a 200 m vertical interval, potentially representing a body of Au+Ag mineralization that is open to depth and open in all directions surrounding these holes. The top of the mineralization in hole 15 lies approximately 255 to 310 m below surface from the RL of the drill collar or the hill top, respectively. However, the geometry of the surface soil anomaly, distribution of un-explained stream sediment gold anomalies and alteration, suggest the target zone may extent to the south where topography is more favourable, highlighting the possibility for mineralization to occur closer to surface in this area.

Gold and silver mineralization in holes 15 and 16 is hosted in a multiphase breccia body ([Figure 3](#)) characterized by intense quartz-alunite+/- jarosite alteration with vuggy silica breccia clasts and a phase of late-stage translucent barite hosting visible gold. This style of mineralization is typical of HSE Au+Ag deposits elsewhere in the same belt of mineralization in Chile ([click here for information on these deposits](#)). These deposits including the recent multi-million ounce gold discoveries by Barrick Gold at Alturas (6.8 M ounce resource at 1.00 g/t Au<sup>1</sup>) and Gold Fields at Salares Norte (3.8 M ounce resource at 3.6 g/t Au and 43.8 M oz Ag at 53.1 g/t Ag<sup>2</sup>) located 70 km due south of the Atlas project. At these projects gold is hosted in breccia bodies and the vuggy silica altered wall rocks and was discovered by drilling through thick geochemically barren alteration caps as seen at the Atlas project.

Anomalous Au-Ag epithermal path finder elements and changes in alteration mineral chemistry were also detected in a separate breccia body intercepted in hole 20 at Atlas. Based on knowledge gained from modelling of results from the Steam Heated Zone, the results from hole 20 suggest that further drilling is warranted in this area to test for higher grade Au-Ag mineralization.

Information gathered from this season’s exploration indicates that the mineralization at Atlas is hosted in a cluster of phreatomagmatic and hydrothermal breccia bodies that when combined outline a larger breccia complex. Preliminary geological models show mineralization identified at Atlas is hosted in both the breccia bodies and in stratabound zones of vuggy silica developed in the wall rock adjoining the breccia. This association of mineralization styles is seen at a number of other large HSE Au+Ag deposits in the Mio-Pliocene age mineral belt that hosts the Atlas mineralization.

---

<sup>1</sup> Barrick Gold Corporation. (2016). *Annual Report 2016*.

<sup>2</sup> Gold Fields. (2016). *The Gold Fields Mineral Resource and Mineral Reserve Supplement to the Integrated Annual Report 2016*.

Mirasol invites investors to follow the Gorbea – Yamana JV story by visiting [www.mirasolresources.com](http://www.mirasolresources.com) and signing up to receive our new releases.

Stephen Nano, President and CEO of Mirasol, has approved the technical content of this news release and is a Qualified Person under NI 43 -101.

For further information, contact:

Stephen Nano  
President and CEO

or

Jonathan Rosset  
Manager of Corporate Development

Tel: +1 (604) 602-9989

**Email:** [contact@mirasolresources.com](mailto:contact@mirasolresources.com)

**Website:** [www.mirasolresources.com](http://www.mirasolresources.com)

Quality Assurance/Quality Control of the Gorbea exploration program:

Under the terms of the Gorbea Agreement, all exploration is managed by Yamana. All pre-Joint Venture exploration on the projects was supervised by Mirasol CEO Stephen C. Nano, who is the Qualified Person under NI 43-101. All information generated from the Gorbea Joint Venture program is reviewed and validated by Mirasol prior to release. The technical interpretations presented here are those of Mirasol Resources Ltd.

Yamana applies industry standard exploration methodologies and techniques. All geochemical rock and drill samples are collected under the supervision of Yamana's geologists in accordance with industry practice. Geochemical assays are obtained and reported under a quality assurance and quality control (QA/QC) program. Samples are dispatched to an ISO 9001:2000-accredited laboratory in Chile for analysis. Assay results from drill core samples may be higher, lower or similar to results obtained from surface samples due to surficial oxidation and enrichment processes or due to natural geological grade variations in the primary mineralization.

Forward Looking Statements: The information in this news release contains forward looking statements that are subject to a number of known and unknown risks, uncertainties and other factors that may cause actual results to differ materially from those anticipated in our forward-looking statements. Factors that could cause such differences include: changes in world commodity markets, equity markets, costs and supply of materials relevant to the mining industry, change in government and changes to regulations affecting the mining industry. Forward-looking statements in this release include statements regarding future exploration programs, operation plans, geological interpretations, mineral tenure issues and mineral recovery processes. Although we believe the expectations reflected in our forward-looking statements are reasonable, results may vary, and we cannot guarantee future results, levels of activity, performance or achievements. Mirasol disclaims any obligations to update or revise any forward-looking statements whether as a result of new information, future events or otherwise, except as may be required by applicable law.

Neither the TSX Venture Exchange nor its Regulation Services Provider (as that term is defined in the policies of the TSX Venture Exchange) accepts responsibility for the adequacy or accuracy of this release.

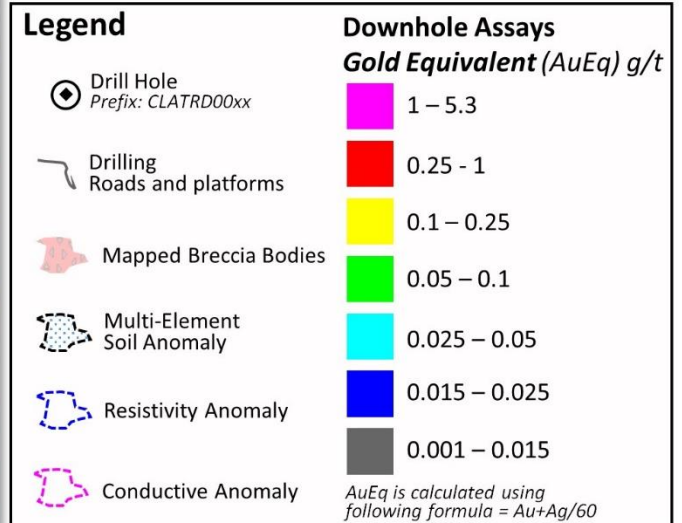
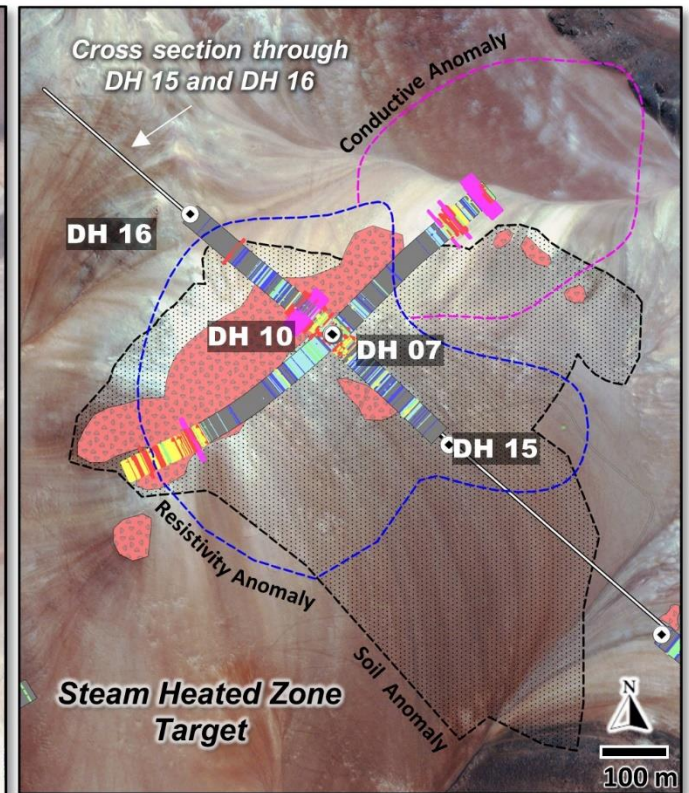
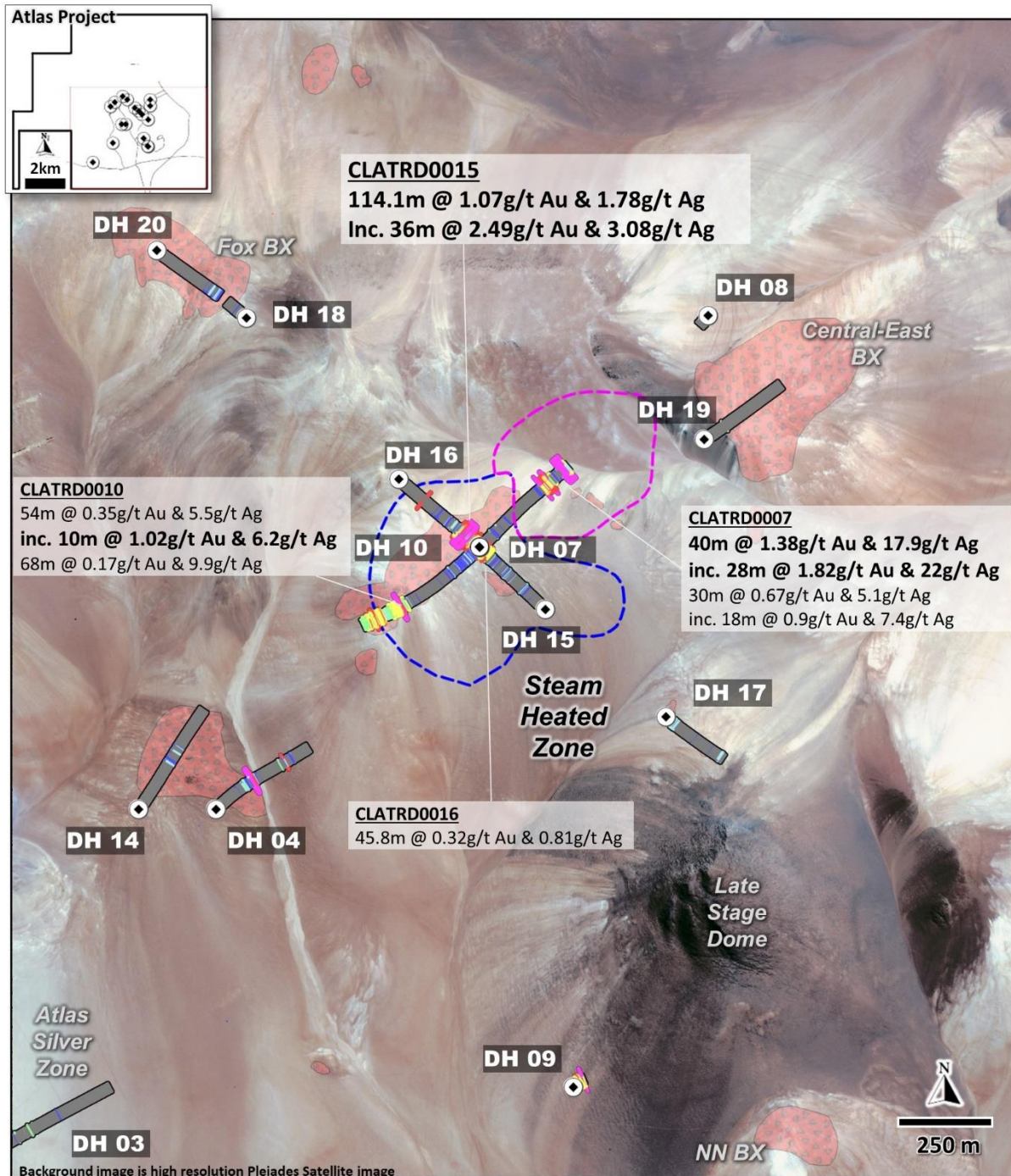


Figure 1: Yamana Gorbea JV - Atlas Project Breccia Bodies, Geophysical and Soil Anomalies and Drill Intersections. September 2017.

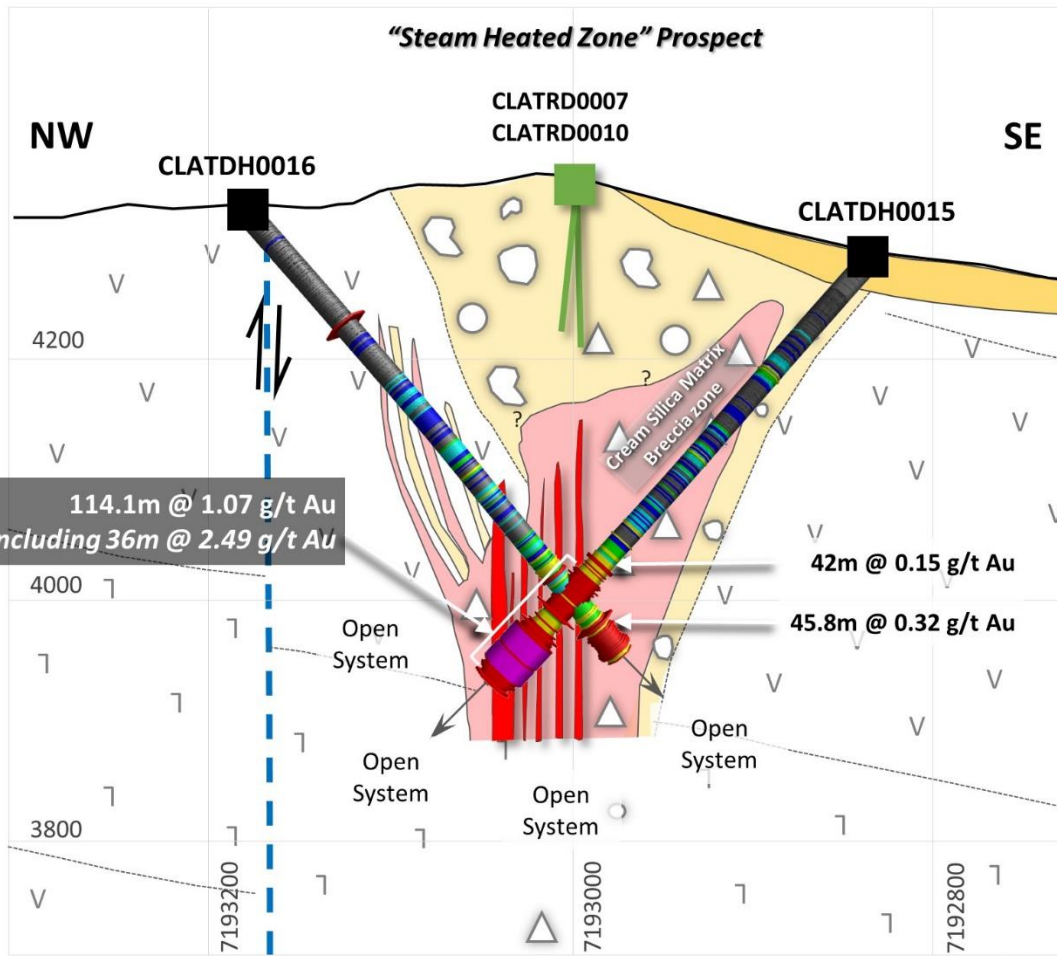
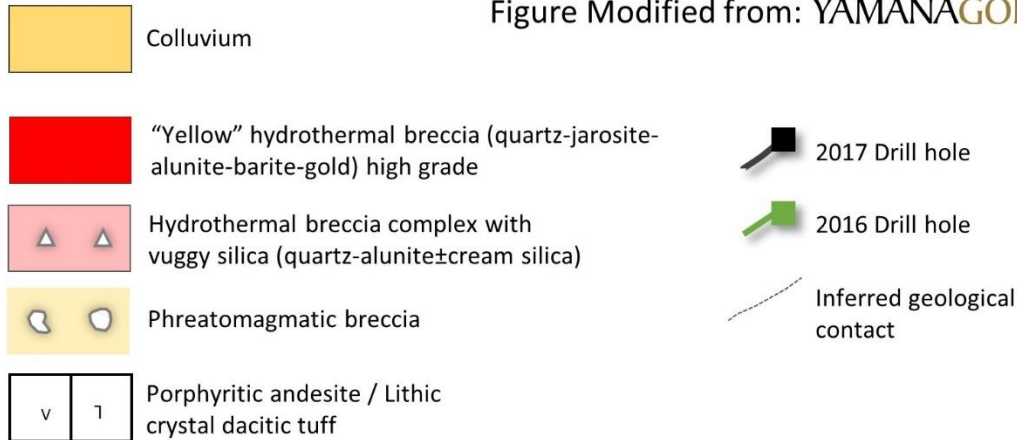
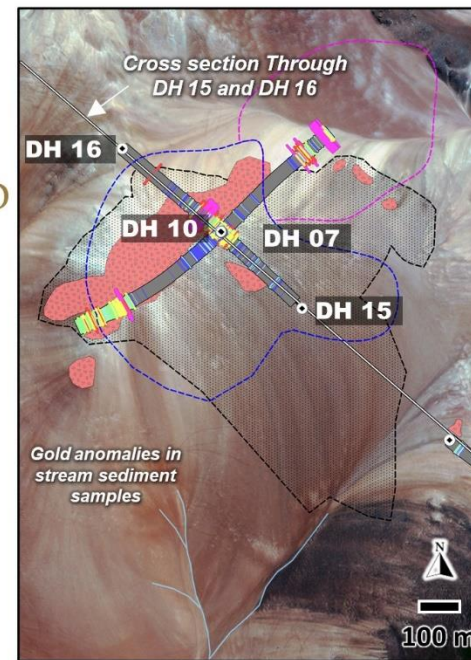
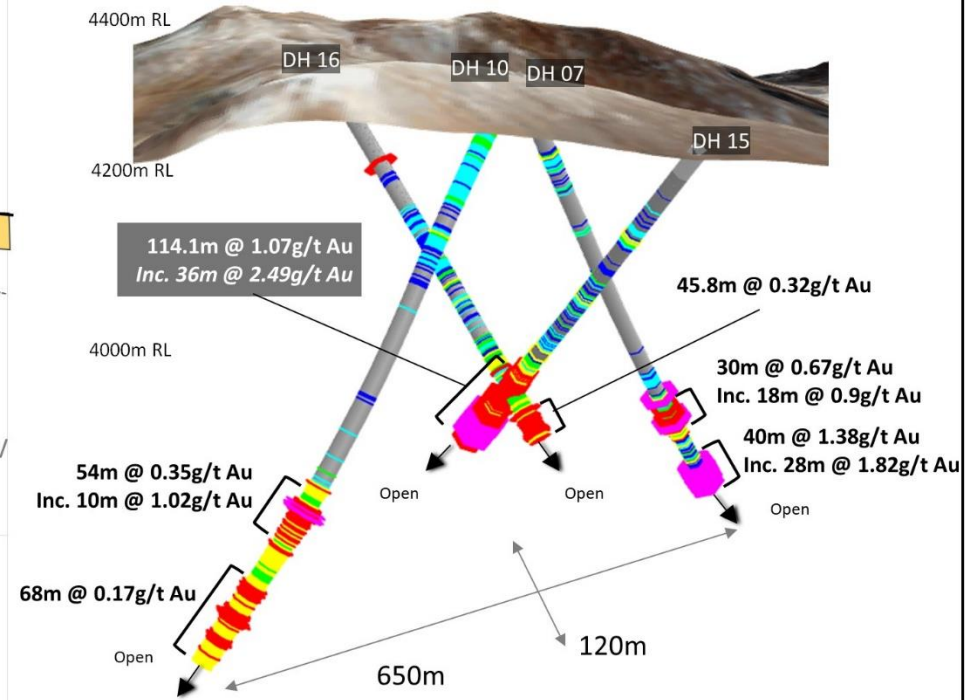


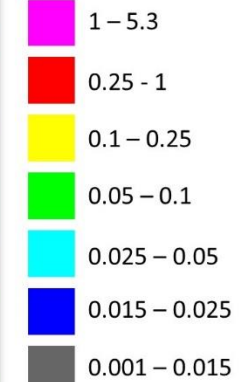
Figure Modified from: YAMANAGOLD



**"Steam Heated Zone" Prospect 3D View**



**Downhole Assays  
Gold Equivalent (AuEq) g/t**



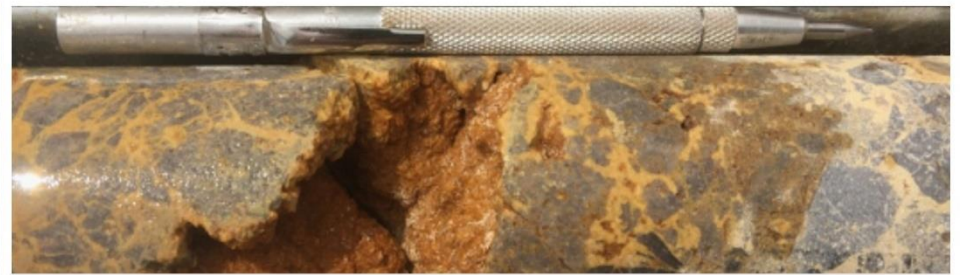
AuEq is calculated using following formula =  $Au + Ag / 60$

Manually selected intervals typically > 0.1 g/t gold and/or > 10g/t silver

Figure 2: Yamana Gorbea JV - Atlas Project Drill Results and Geology Cross Section through DH15 and DH16. September 2017.



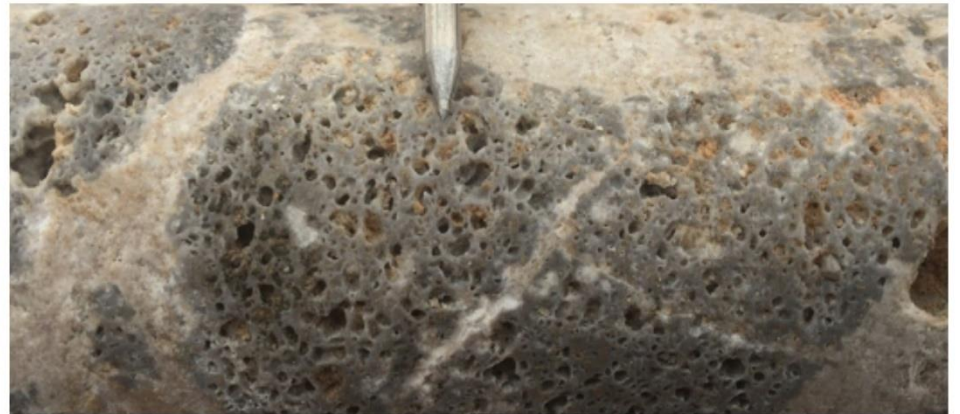
141.10m (0.009 g/t Au – 0.25 g/t Ag)  
Polymict hydrothermal breccia with cream silica matrix. Angular to sub-angular clasts of vuggy silica and grey chalcedonic silica. Open space cavities with quartz alunite fill



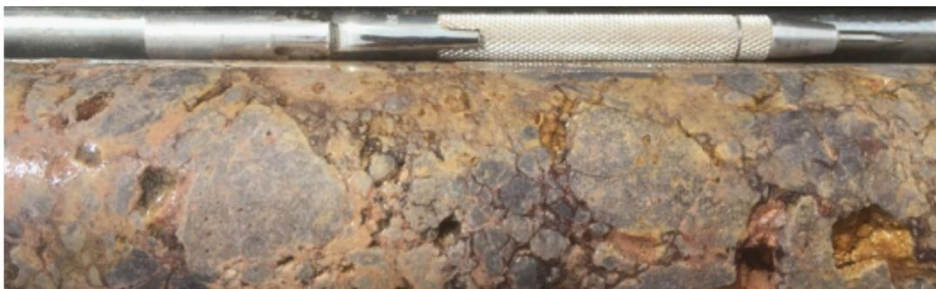
420m (2.96 g/t Au – 1.7 g/t Ag) “Yellow” hydrothermal breccia, quartz-jarosite-alunite matrix. Cavities with linings of crystalline barite and traces of native gold



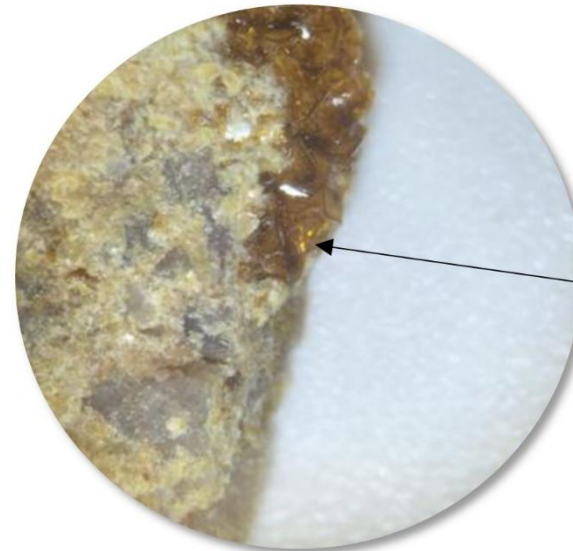
414m (2.54 g/t Au & 1.1 g/t Ag), “Yellow” polymict hydrothermal breccia jarosite-alunite-barite-filled matrix with sub angular vuggy silica altered fragments



443.65m (2.14 g/t Au – 4.2 g/t Ag) Hydrothermal breccia with quartz-alunite matrix and clasts of andesite with intense vuggy silica alteration



416m (5.52 g/t Au – 1.7 g/t Ag) “Yellow” hydrothermal breccia, quartz-jarosite-alunite matrix. Cavities lined with crystals barite with traces of native gold



Visible gold in translucent barite crystal as cavity infill in the “Yellow Breccia” at 415.05 m

Photos Supplied By: YAMANAGOLD



Figure 3: Yamana Gorbea JV - Atlas Project Hydrothermal Breccia Facies and Mineralization, CLATDH0015. September 2017.

Hole Number	Including interval	From (m)	To (m)	Interval (m)	Gold (g/t)	Silver (g/t)	AuEq60 (g/t)	AuEq60 Gram x Metre	Reported
CLATDH0015		305.0	347.0	42.0	0.15	0.42	0.16	6.7	This News Release
		<b>347.0</b>	<b>461.1</b>	<b>114.1</b>	<b>1.07</b>	<b>1.78</b>	<b>1.10</b>	<b>125.5</b>	This News Release
	<b>inc.</b>	<b>412.0</b>	<b>448.0</b>	<b>36.0</b>	<b>2.49</b>	<b>3.08</b>	<b>2.54</b>	<b>91.5</b>	This News Release
CLATDH0016		430.0	475.8	45.8	0.32	0.81	0.33	15.1	This News Release
CLATRD0002		22.0	46.0	24.0	0.18	13.09	0.40	9.5	March 21, 2016
CLATRD0004		230.0	244.0	14.0	0.06	150.11	2.56	35.9	March 21, 2016
CLATRD0007		440.0	446.0	6.0	0.87	1.17	0.89	5.3	April 25, 2016
		458.0	488.0	30.0	0.67	5.08	0.76	22.7	April 25, 2016
	<b>inc.</b>	470.0	488.0	18.0	0.90	7.43	1.02	18.4	April 25, 2016
		<b>556.0</b>	<b>596.0</b>	<b>40.0</b>	<b>1.38</b>	<b>17.88</b>	<b>1.68</b>	<b>67.3</b>	April 25, 2016
	<b>inc.</b>	<b>556.0</b>	<b>584.0</b>	<b>28.0</b>	<b>1.82</b>	<b>22.04</b>	<b>2.19</b>	<b>61.2</b>	April 25, 2016
CLATRD0009		276.0	302.0	26.0	0.04	13.66	0.27	6.9	April 25, 2016
CLATRD0010		468.0	522.0	54.0	0.35	5.46	0.44	23.9	April 25, 2016
	<b>inc.</b>	472.0	482.0	10.0	1.02	6.18	1.12	11.2	April 25, 2016
		560.0	628.0	68.0	0.17	9.90	0.33	22.7	April 25, 2016

#### NOTES

1. Manually selected intervals typically > 0.1 g/t gold and/or >10g/t silver
2. Intervals presented in this table have been limited to those with a Gram Metre interval greater than 5 gm
3. Bolded intervals are those with a Gram Metre interval greater than 50 gm
4. AuEq60 Gram Metre Interval is Calculated using AuEq60 (g/t) x intersection Interval (m)
5. Gold Equivalent grade (AuEq60) is calculated using following formula: Gold + (Silver / 60)

Table 1: Yamana Gorbea JV - Atlas Project Key Downhole Intersections to Date. September 2017.

Hole Number	Azimuth (deg)	Dip (deg)	Drilling Depth (m)	Northing (m UTM-19S)	Easting (m UTM-19S)	Elevation (m)	Drilling Type	Reported
CLATRD0001	45	- 45	346	7,193,244	502,047	4,282	RC	March 21, 2016
CLATRD0002	225	- 50	377	7,193,456	502,270	4,295	RC and DD	March 21, 2016
CLATRD0003	45	- 55	808	7,191,363	502,170	4,137	RC and DD	March 21, 2016
CLATRD0004	45	- 55	600	7,192,321	502,825	4,206	RC and DD	March 21, 2016
CLATRD0005	45	- 50	522	7,190,364	501,138	4,091	RC	March 21, 2016
CLATRD0006	45	- 61	66	7,191,167	503,987	4,110	RC	March 21, 2016
CLATRD0006B	45	- 61	550	7,191,199	503,966	4,111	RC and DD	March 21, 2016
CLATRD0007	45	- 58	600	7,193,000	503,509	4,344	RC	April 25, 2016
CLATRD0008	225	- 85	336	7,193,601	504,099	4,206	RC	April 25, 2016
CLATRD0009	45	- 85	581	7,191,601	503,750	4,149	RC and DD	April 25, 2016
CLATRD0010	225	- 60	650	7,193,001	503,507	4,344	RC	April 25, 2016
CLATRD0011	212	- 65	150	7,182,455	500,386	4,387	RC	This News Release
CLATRD0012	43	- 60	180	7,182,158	500,389	4,343	RC	This News Release
CLATRD0012B	213	- 60	180	7,182,455	500,383	4,387	RC	This News Release
CLATRD0013	229	- 80	200	7,181,774	500,567	4,358	RC	This News Release
CLATDH0014	32	- 50	499	7,192,321	502,625	4,215	DD	This News Release
CLATDH0015	310	- 48	461	7,192,839	503,678	4,293	DD	This News Release
CLATDH0016	130	- 50	476	7,193,177	503,299	4,335	DD	This News Release
CLATDH0017	130	- 50	300	7,192,561	503,990	4,277	DD	This News Release
CLATDH0018	310	- 50	102	7,193,595	502,904	4,318	DD	This News Release
CLATDH0019	55	- 50	400	7,193,279	504,089	4,221	DD	This News Release
CLATDH0020	128	- 50	320	7,193,770	502,671	4,312	DD	This News Release

#### NOTES

Collar coordinates are in datum and projection PSAD56 / UTM zone 19S

Drilling types are Diamond Core (DD) and Reverse Circulation (RC)

.Total DD = 4,080 m }  
Total RC = 4,624 m } 8,704 m drilled at the Atlas project to date



Table 2: Yamana Gorbea JV - Atlas Project Drillhole Position and Details. September 2017.