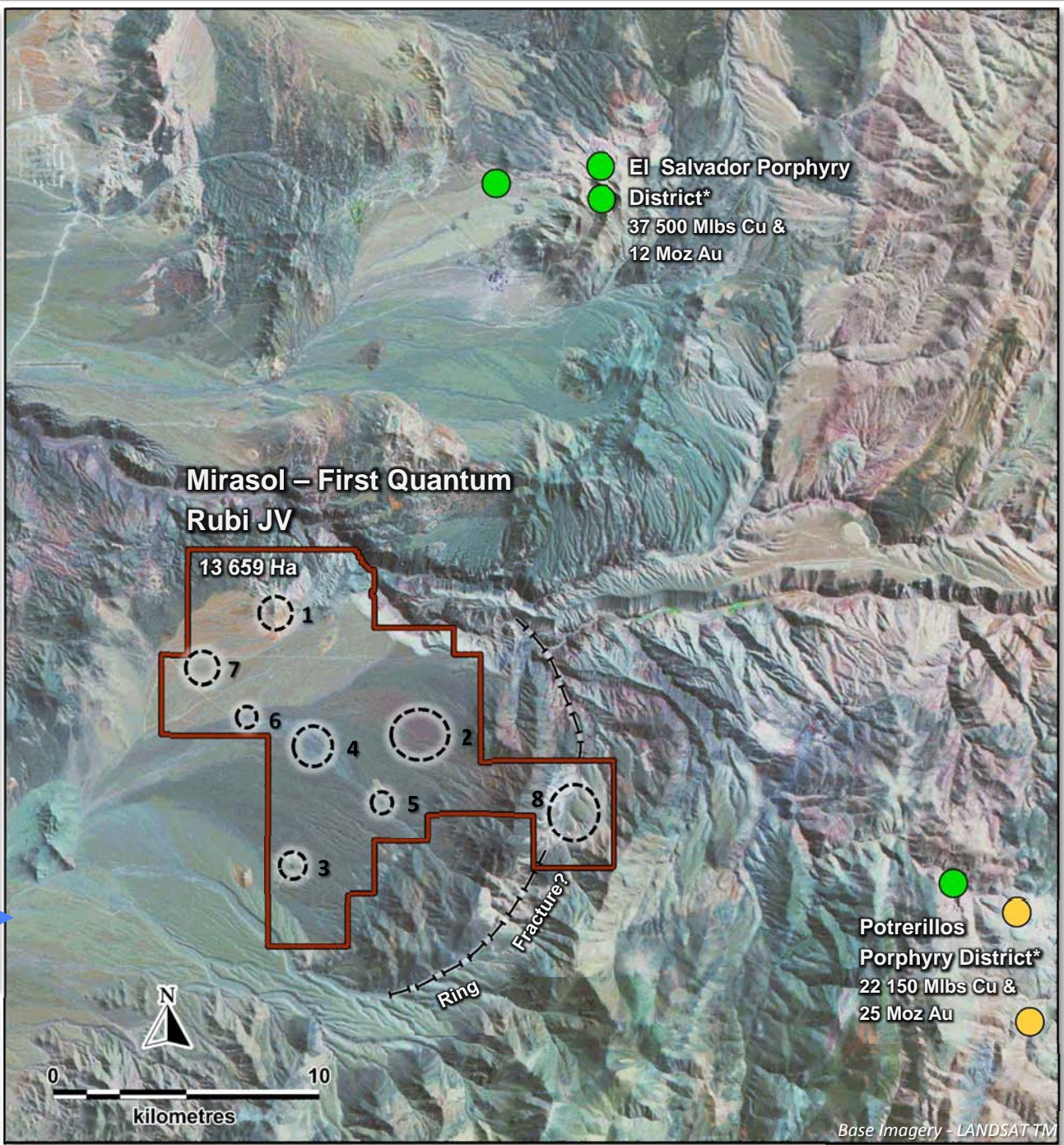


Base Image - Residual intensity map of the total magnetic field in Northern Chile modified from: Economic Geology, 2001. Vol 96: 239-248

Legend	
Normal (& Positive) Magnetic Intensity	Primary Au Deposit/Mine
Strong Magnetic Low	Primary Cu Deposit/Mine



Rubi Targets

ID / Target	Description
1 Lithocap*	Alteration, Enzyme Leach Anomaly, Magnetic Depletion
2 Pampa NE	Circular Magnetic High, Enzyme Leach Anomaly
3 Corner Zone	Magnetic Depletion, Enzyme Leach Anomaly, Favourable Structure
4 Pampa Central	Magnetic, Enzyme Leach and pH Anomaly
5 Eastern Zone*	Alteration, Multiphase Intrusion Complex
6 Pampa Central Offset	Enzyme Leach Anomaly
7 Lithocap West	Magnetic and Enzyme Leach Anomaly
8 Portezuelo*	Alteration, Stream Anomaly

*Singer et al (2008) Porphyry Copper Deposits of the World: Database and Grade and Tonnage Models, USGS Open-File Report 2008-1155, version 1.0
 *A global contained metal based on the total production, reserves, and resources for the USGS world porphyry database 2008

* Denotes Outcrop, otherwise covered

Figure 1: Rubi porphyry copper-gold joint venture exploration targets.